

Palisades Contemporary Living

Pattaya, East Pattaya, Thailand
Reference: 315

฿34,850,000



5 Bedrooms

6 Bathrooms

Villa

Property Description

Introducing Palisades Contemporary Living, a stunning house and villa project that combines modern luxury with the serene charm of Pattaya's Nong Prue area. Located near the vibrant Jomtien Beach Central, this development offers the perfect blend of upscale living and convenient access to beachside attractions.

Location and Neighborhood: Palisades Contemporary Living is ideally situated on the east side of Pattaya City, nestled comfortably near the end of Khao Talo. This prime location ensures that residents are never far from everyday conveniences, including a variety of supermarkets, convenience stores, bars, and restaurants. The project is also positioned behind Tara Pattana International School, making it an excellent choice for families with school-age children. For those who enjoy the tranquility of nature, Maabprachan Lake is just over 5 minutes away, providing a peaceful retreat. Moreover, central Pattaya is accessible within approximately 15 minutes, offering a wealth of entertainment and dining options.

Property Details: The Palisades Contemporary Living project, completed in December 2022, features 10 luxurious, high-end, two-story houses. Each unit is thoughtfully designed to cater to the needs of modern living. The houses boast an impressive 6 bedrooms, providing ample space for families and guests alike.

Condition and Amenities: These villas are the epitome of contemporary style and comfort. Each villa spans a generous 580 square meters, with a plot size of 840 square meters, offering both spacious interiors and expansive outdoor areas. The development is built on a 6 Rai plot, ensuring a sense of

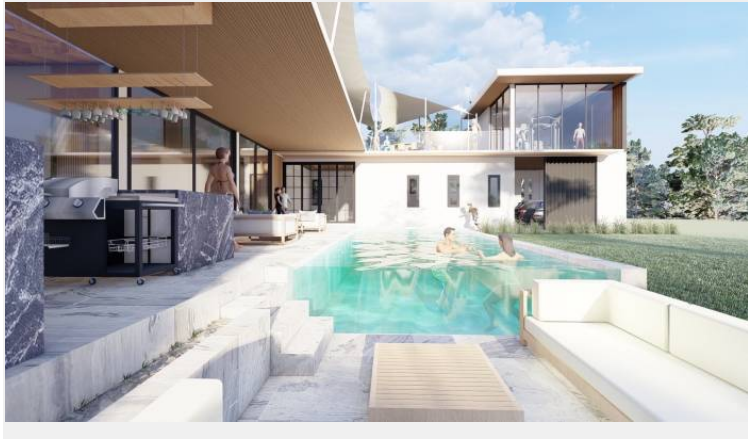
privacy and exclusivity. Residents can enjoy the luxury of 9 bathrooms, adding to the convenience and elegance of these homes.

Financial Information: For those interested in making Palisades Contemporary Living their home, the villas are available for purchase at a base price of ฿34,850,000, which translates to approximately ฿60,500 per square meter. This investment represents not only a high-quality living space but also the prestige and exclusivity of one of Pattaya's most sought-after locations.

Contact Information: To explore this exceptional opportunity further, potential buyers can reach out to Pearl Property for more information or to schedule a viewing. The contact details are:

- Tel: +66-33-135-053
- Whatsapp: +66-33-135-053
- Line: @pearlproperty
- Email: info@pearlpropertypattaya.com

Photo Gallery



Property Details

- **Property Type:** Villa
- **Location:** Pattaya, East Pattaya, Thailand
- **Price:** ฿34,850,000
- **Bedrooms:** 5
- **Bathrooms:** 6

Property Features

- Security
- Jacuzzi
- Swimming Pool
- Air Conditioning
- Balcony
- Car Park
- Electricity
- Integral Kitchen
- Internet
- Alarm
- Equipped Kitchen
- Terrace

Location

