

Tropicana - Penthouse

Pattaya, Bang Lamung, Thailand
Reference: 11886

฿16,954,000



2 Bedrooms



2 Bathrooms



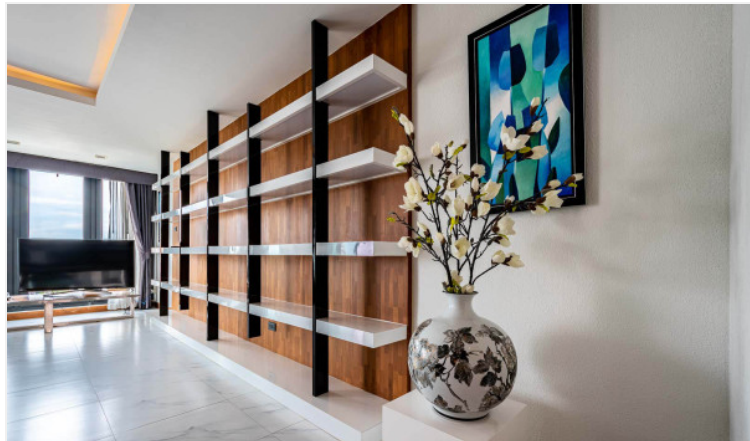
Condo

Property Description

Tropicana is unique as it is specially designed for retirees offering a medical facility staffed with a full-time staff and doctors. This stunning penthouse is a complete fully furnished unit with a spacious space of 255 sqm. There are two pools in the complex and a spa, and a fitness center. The location of Tropicana is ideal as it is 5 minutes to central Pattaya and has an amazing beach at the end of the street. Unit sizes start from 70 sqm. up to 250 sqm. All units are in foreign ownership.

Photo Gallery







Property Details

- **Property Type:** Condo
- **Location:** Pattaya, Bang Lamung, Thailand
- **Internal Area:** 255.73m²
- **Land Area:** 256m²
- **Price:** ฿16,954,000
- **Bedrooms:** 2
- **Bathrooms:** 2

Property Features

- Security
- Gym
- Swimming Pool
- Balcony
- Car Park
- Electricity
- Integral Kitchen

Location

