

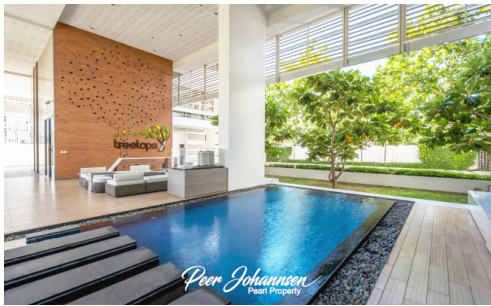
# Treetops - 1 Bed 1 Bath A1

Pattaya, South Pattaya, Thailand  
Reference: 6613

฿1,677,600



1 Bedrooms



1 Bathrooms



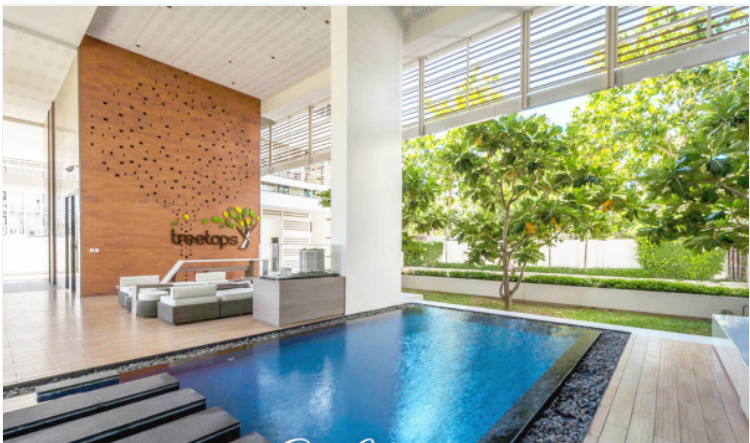
Condo



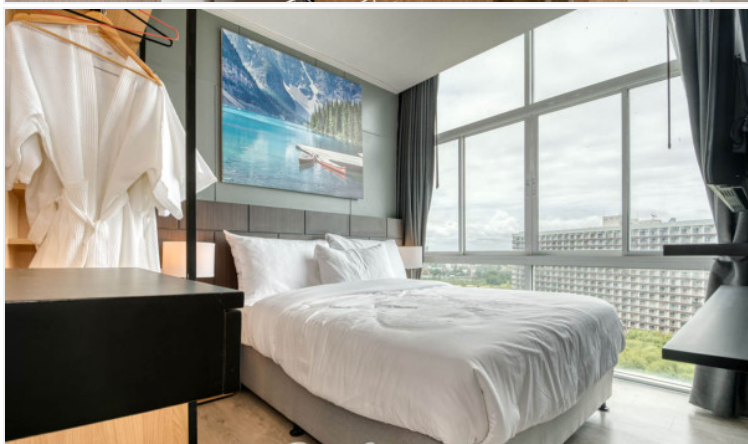
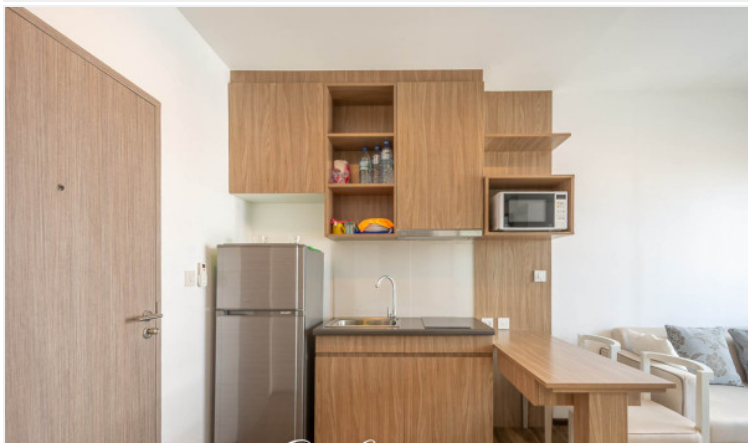
# Property Description

Treetops is a mid-rise freehold condominium developed by Boutique Group, comprising 252 units across 15 floors. It is designed in a contemporary boutique style in accordance with the natural environment. The project is situated on the potential location, Thappraya Road which is easily accessible to Jomtien Beach, Pratamnak Hill, Pattaya Beach, and local attractions. The condominium represents modern living with complete facilities including a rooftop swimming pool, garden, fitness center, BBQ area, wifi, parking, and security

# Photo Gallery







## Property Details

---

- **Property Type:** Condo
- **Location:** Pattaya, South Pattaya, Thailand
- **Internal Area:** 34.95m<sup>2</sup>
- **Land Area:** 35m<sup>2</sup>
- **Price:** ฿1,677,600
- **Bedrooms:** 1
- **Bathrooms:** 1

## Property Features

---

- Security
- Gym
- Swimming Pool

## Location

---

