

The Jewel Pratumnak - 2 Bedroom 2 Bathroom (11th Floor)

Pattaya, Bang Lamung, Thailand
Reference: 7359

฿6,490,000



2 Bedrooms

2 Bathrooms

Condo

Property Description

Pearl Property presents this stunning sea view 2-bedroom condo at Jewel Pratumnak, one of the most sought-after developments in Pratumnak Hill, Pattaya. Perfectly positioned between Jomtien and Central Pattaya, this stylish residence offers the ideal blend of coastal tranquility and city convenience.

Situated just minutes from Sky Gallery and The Chocolate Factory, residents can enjoy Pattaya’s finest dining and breathtaking sunset views right at their doorstep. Central Festival Pattaya is only a 10-minute drive away, providing easy access to shopping, entertainment, and nightlife.

This beautifully designed unit offers 63 sqm of thoughtfully planned living space, located on the 11th floor with sweeping sea views. The condo features 2 bedrooms and 2 bathrooms, a modern open-plan living area, and a fully equipped European kitchen. Large windows invite natural light and sea breezes, creating a bright and airy atmosphere ideal for relaxed coastal living.

Property highlights:

- 63 sqm | 2 bedrooms | 2 bathrooms
- 11th floor with panoramic sea view
- Fully furnished in contemporary style
-

- Transfer fees 50/50

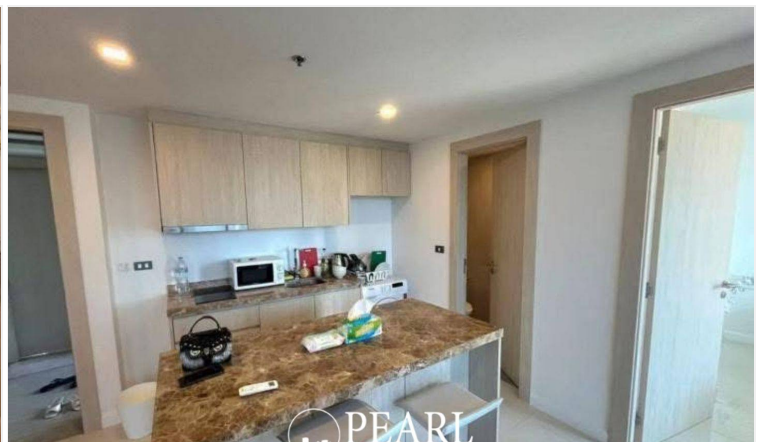
Development features:

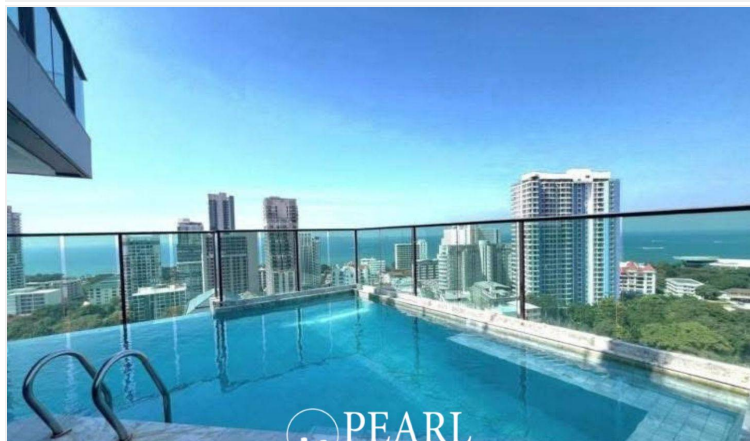
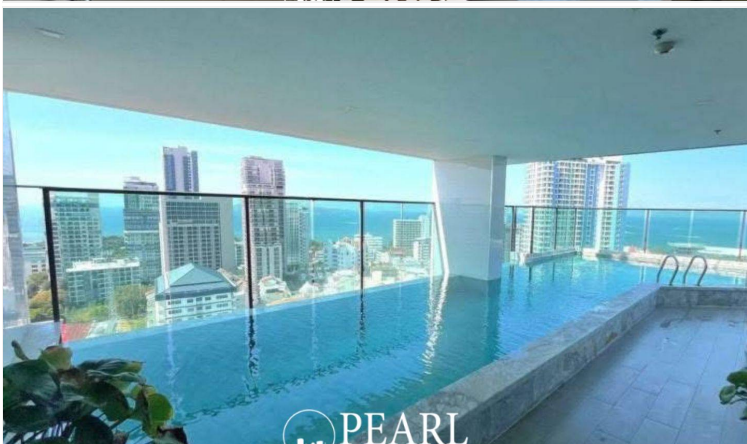
Residents at Jewel Pratumnak enjoy exclusive facilities including a rooftop infinity pool, fitness center, sauna, covered parking, and 24-hour security.

Experience the best of Pattaya's luxury coastal lifestyle at Jewel Pratumnak Condo – where elegance meets convenience.

Contact us today to schedule a private viewing or arrange a virtual tour.

Photo Gallery





Property Details

- **Property Type:** Condo
- **Location:** Pattaya, Bang Lamung, Thailand
- **Internal Area:** 63m²
- **Price:** ฿6,490,000
- **Bedrooms:** 2
- **Bathrooms:** 2

Property Features

- Security
- Gym
- Sauna
- Swimming Pool
- Car Park
- Lift
- Disabled Access

Location

