

The Gallery Condominium - 1 Bed 1 Bath (7th Floor)

Pattaya, Jomtien, Thailand

Reference: 8284

฿3,300,000



1 Bedrooms



1 Bathrooms



Condo

Property Description

Pearl Property presents an elegantly renovated condo at The Gallery Jomtien - just a short walk from Jomtien Beach!

Located on the **7th floor of Building A**, this **1-bedroom, 1-bathroom** condo spans **45.03 sqm** and includes a **separate laundry room**. Fully furnished and move-in ready, this unit offers modern comfort and privacy in a peaceful, resort-style environment.

Property Highlights

- **Urgent Sale** - Fully renovated
- **Size:** 45.03 sqm | **7th floor**
- Private laundry room for added convenience
- Multiple parking spaces available, with the option to purchase a reserved spot

Resort-Style Facilities

- Rooftop swimming pool with stunning views

- Fitness center and landscaped garden
- 24-hour security and ample parking

Prime Location - Soi Jomtien 7, Na Kluea, Pattaya

The Gallery Jomtien offers easy access to Jomtien Beach and a range of amenities, making it perfect for both living and investment.

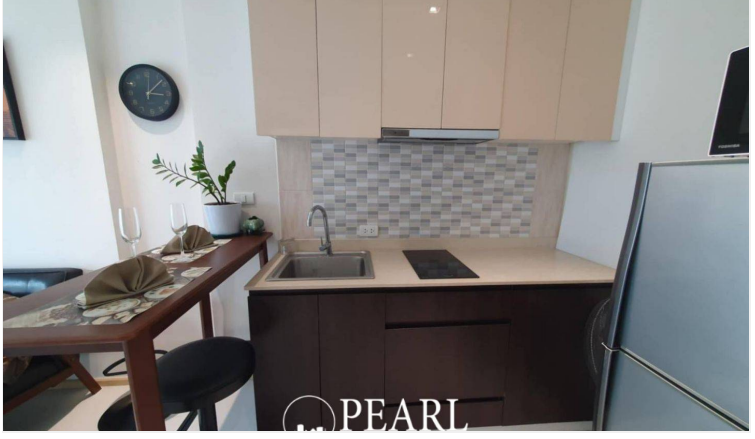
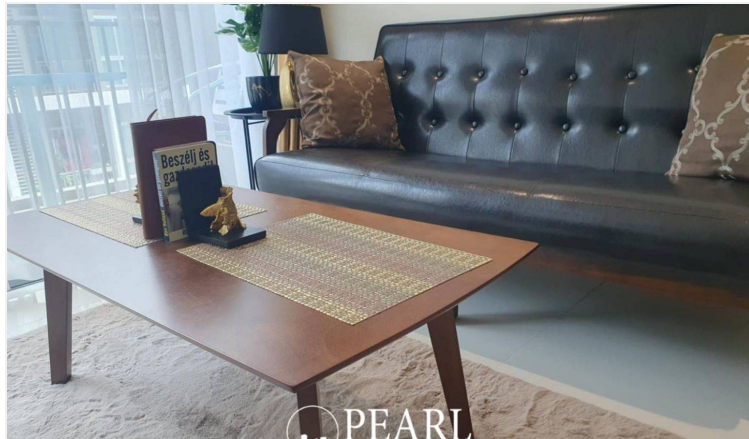
Nearby Amenities

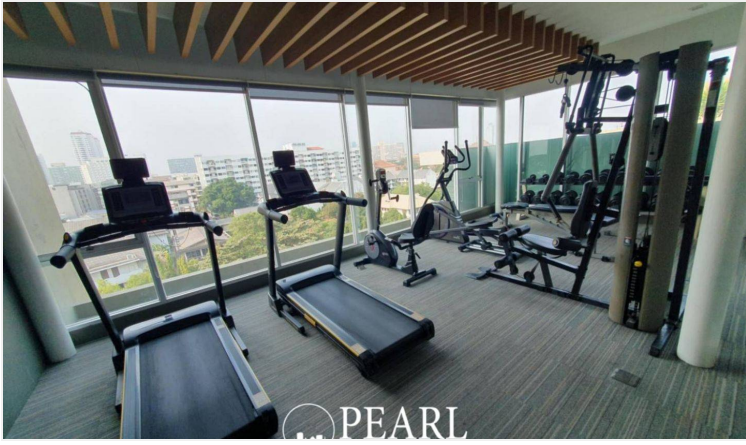
- Supermarkets & Shopping:** Tops Daily, Food Mart, Family Mart, The Plaza Jomtien
- Schools:** Wat Na Jomtien School, International Martial Arts School, Montessori Children's Center
- Dining:** Italian Pizza, Som Tum Mae Pranee, Great American Ribs, Sukhothai Noodles
- Healthcare:** Pattaya Memorial Hospital - just 6 km away

Don't miss this opportunity for beachfront living with great convenience and modern comfort.

Contact us today for more details or to schedule a viewing!

Photo Gallery







Property Details

- **Property Type:** Condo
- **Location:** Pattaya, Jomtien, Thailand
- **Internal Area:** 45.03m²
- **Land Area:** 45m²
- **Price:** ฿3,300,000
- **Bedrooms:** 1
- **Bathrooms:** 1

Location

