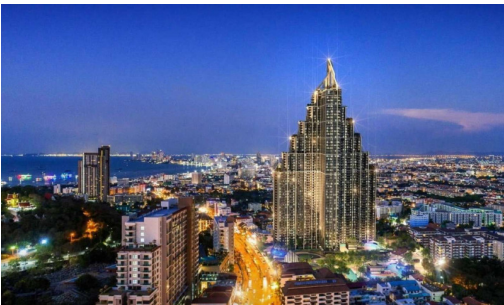


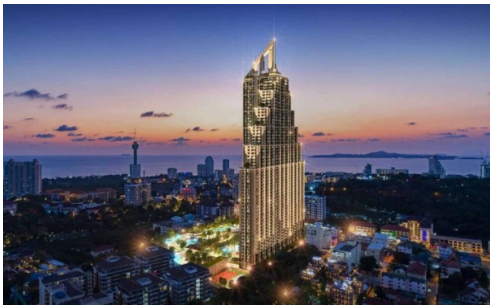
# Grand Solaire

Pattaya, Central Pattaya, Thailand  
Reference: 19323

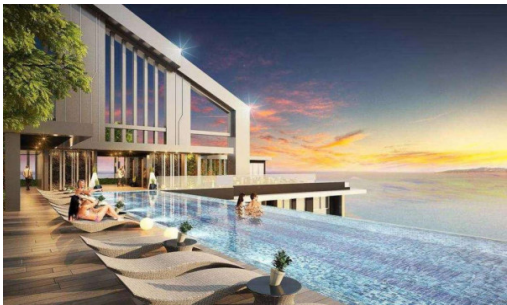
฿2,790,000



1 Bedrooms



0 Bathrooms



Condo

# Property Description

---

Grand Solaire Pattaya, a new dimension in luxury living, offers breathtaking views of Pattaya Bay, Koh Larn, and Jomtien Beach. The project, which is located on Thappraya Road Soi 15 in Bang Lamung, Chonburi, is a 67-story high-rise condominium with 2,326 residential units. The project is expected to be completed in December 2024 and is developed by SLR Development Co., Ltd.

## Project Information

Grand Solaire Pattaya is located in the heart of Nong Prue, Pattaya, and provides residents with convenient access to the city's many attractions and local amenities. The project features two buildings and is situated on approximately 14 rai of land. It offers a wide range of residential units, including 1-bedroom units, 2-bedroom units, 2-bedroom units with a swimming pool, 3-bedroom units, 3-bedroom VIP units, 4-bedroom units with a swimming pool, and 5-bedroom units.

## Luxury Amenities and Services

Grand Solaire Pattaya provides residents with a 5-star living experience, complete with modern interior design, premium furniture, and a wide range of luxurious amenities and services. These include a fitness center, swimming pool, garden, restaurant, yoga area, clubhouse, futsal field, table tennis, tennis court, playground, health spa, badminton court, basketball court, golf putting yard, parking lot, and VIP parking.

## Room Types and Sizes

Residents at Grand Solaire Pattaya can choose from a variety of room types and sizes, including:

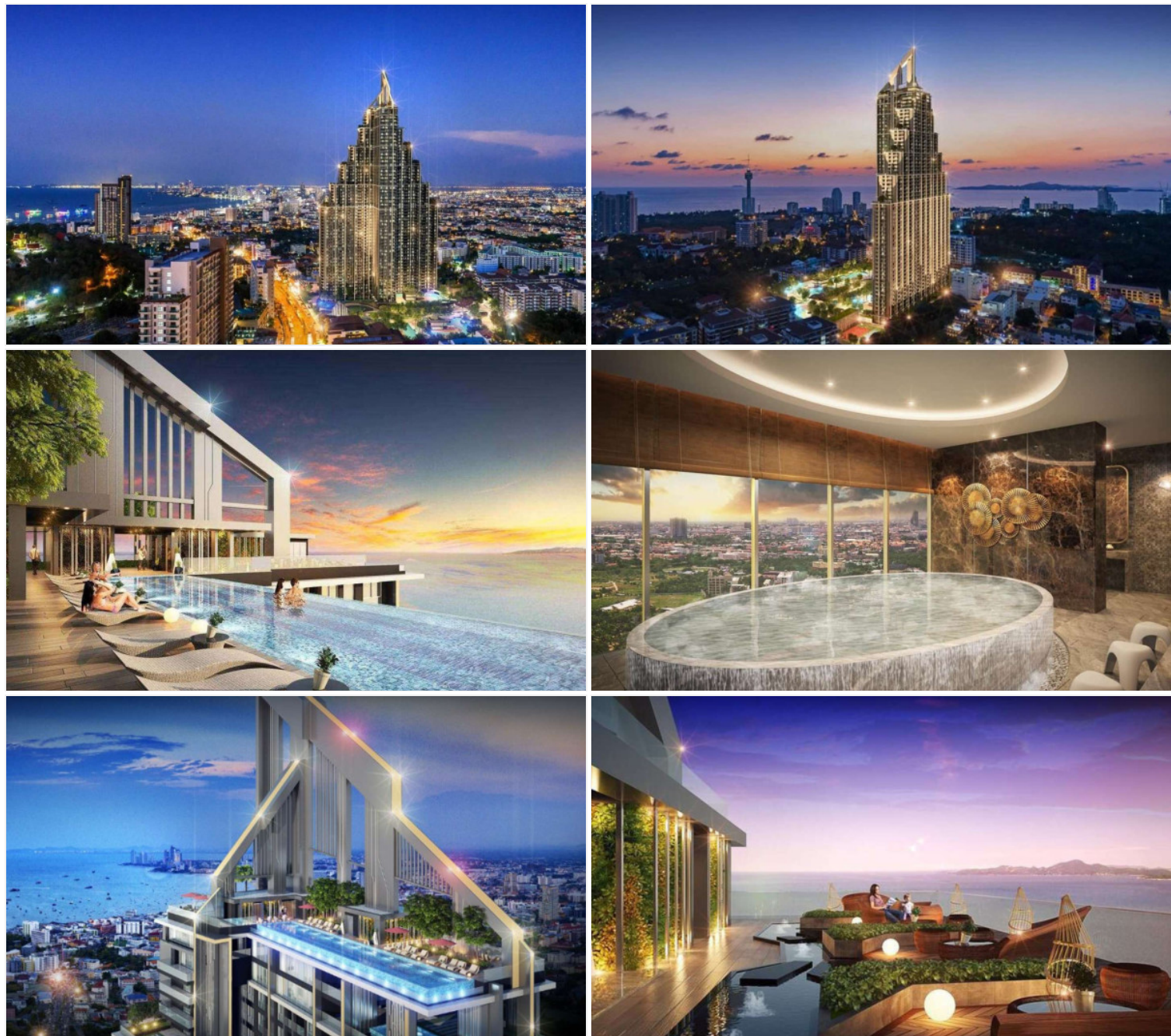
- 1 bedroom units with sizes ranging from 29 to 40 square meters
- 2 bedroom units with sizes ranging from 41 to 60.5 square meters
- 2 bedroom units with a swimming pool, with sizes ranging from 137 to 148 square meters
- 3 bedroom units with sizes ranging from 99 to 150 square meters
- 3 bedroom VIP units with sizes ranging from 213 to 225 square meters
- 4 bedroom units with a swimming pool, with sizes of 267 square meters
- 5 bedroom units

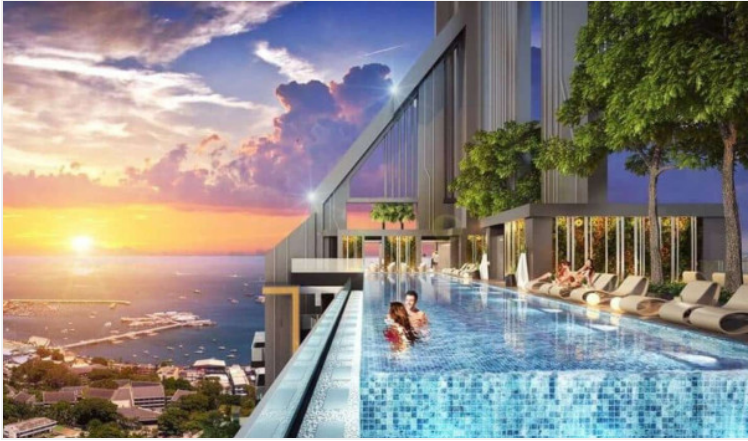


Convenient Services

In addition to the luxurious amenities and facilities, Grand Solaire Pattaya also provides residents with additional services, including a laundry service and driver. The project's lobby is also equipped with a pool table, offering residents a place to relax and unwind.

Photo Gallery





# Property Details

---

- **Property Type:** Condo
- **Location:** Pattaya, Central Pattaya, Thailand
- **Land Area:** 26400m<sup>2</sup>
- **Price:** ฿2,790,000
- **Bedrooms:** 1
- **Bathrooms:** 0

# Property Features

---

- Security
- Gym
- Jacuzzi
- Sauna
- Swimming Pool
- Tennis Court
- Air Conditioning
- Balcony
- Car Park
- Electricity
- Integral Kitchen
- Internet
- Alarm
- Children's Area
- Concierge
- Guardhouse
- Lift
- Roof Garden
- Equipped Kitchen
- Disabled Access

# Location

---



