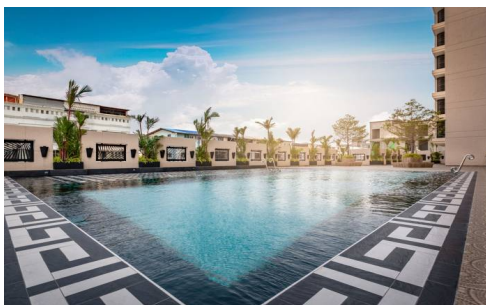
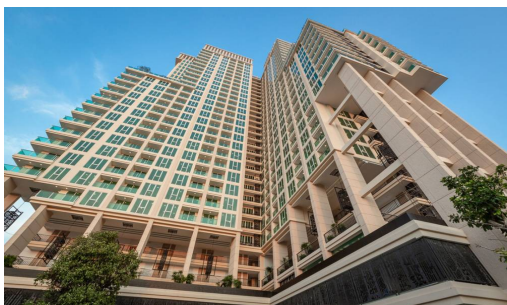


City Garden Tower

Pattaya, South Pattaya, Thailand

Reference: 327

฿2,500,000



1 Bedrooms

1 Bathrooms

Condo

Property Description

Introduction

Welcome to City Garden Tower, a beacon of modern luxury and elegance in the heart of Pattaya. This high-rise condo project is an architectural marvel, offering a blend of comfort and sophistication, designed to elevate your living experience.

Location and Neighborhood

Nestled in the vibrant core of Pattaya, City Garden Tower is strategically located to offer the best of urban living. The condo is just moments away from Pattaya Beach, offering stunning sea views and easy access to the beachfront's lively atmosphere. Nearby, you'll find a plethora of shopping centers like Central Festival Pattaya, renowned restaurants, and entertainment hubs. The area is well-connected, with easy access to public transportation, ensuring seamless connectivity to the rest of the city.

Property Details

City Garden Tower stands as an impressive high-rise, offering a range of units to suit diverse needs. Each condo is meticulously designed with modern aesthetics and practicality in mind. The units vary in size, featuring spacious layouts with one or two bedrooms, well-appointed bathrooms, and balconies that offer breathtaking views of Pattaya's skyline or the serene Gulf of Thailand.

Condition and Amenities

City Garden Tower prides itself on its state-of-the-art facilities and pristine condition. Residents can enjoy a host of amenities, including a large swimming pool, a fully equipped gym, sauna rooms, and lush gardens that provide a tranquil escape from the bustling city. The building also offers high-speed elevators, 24-hour security, and covered parking, ensuring comfort and safety for all residents.

Financial Information

The management fee and sinking fund are structured to ensure the maintenance and longevity of City Garden Tower. These fees are competitively priced, reflecting the high-quality services and amenities

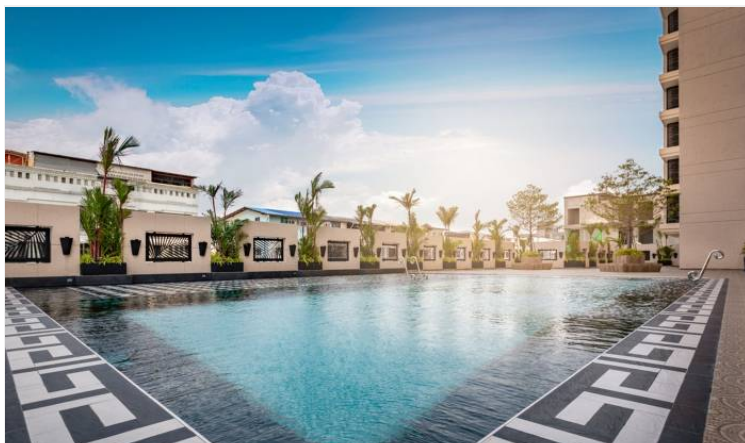
provided. For specific figures on the management fee and sinking fund, interested parties can directly contact the management.

Contact Information

For more information or to schedule a viewing, please contact:

- Tel: +66-33-135-053
- Whatsapp: +66-33-135-053
- Line: @pearlproperty
- Email: info@pearlpropertypattaya.com

Photo Gallery





Property Details

- **Property Type:** Condo
- **Location:** Pattaya, South Pattaya, Thailand
- **Land Area:** 4800m²
- **Price:** ฿2,500,000
- **Bedrooms:** 1
- **Bathrooms:** 1

Property Features

- Security
- Gym
- Jacuzzi
- Sauna
- Swimming Pool
- Air Conditioning
- Balcony
- Car Park
- Electricity
- Integral Kitchen
- Internet
- Alarm
- Concierge
- Guardhouse
- Lift
- Roof Garden
- Equipped Kitchen
- Disabled Access

Location

