

# Beverly Mountain Bay - 1 Bed 1 Bath

## Type B (11th Floor)

Pattaya, Bang Lamung, Thailand  
Reference: 9509

฿3,990,000



1 Bedrooms



1 Bathrooms



Condo

# Property Description

---

Discover the epitome of luxury living at Beverly Mountain Bay Pattaya, a 5-star luxury condominium located in the heart of Pattaya. This prestigious project, completed in 2021, is managed by RAMADA by WYNDHAM, offering a unique blend of privacy, exclusivity, and top-tier services.

Beverly Mountain Bay Pattaya is strategically located at Pratumnak Soi 5. It's nestled in a prime area surrounded by the scenic beauty of mountains and sea, creating a serene environment that's just an hour's drive from Bangkok. The condominium is within close proximity to various tourist attractions, offering a mix of tranquility and entertainment.

## Property Details

- Type: 22-story high-rise condominium
- Units: 201 (199 residential units and 2 retail shops)
- Parking: 68 car parking spaces
- Room Types:
  - Studio (27.14 sq.m)
  - 1 Bedroom (34.77-36.77 sq.m)
  - 2 Bedrooms (43.81-67.12 sq.m)
  - Duplex 1-2 Bedrooms (59-72 sq.m)

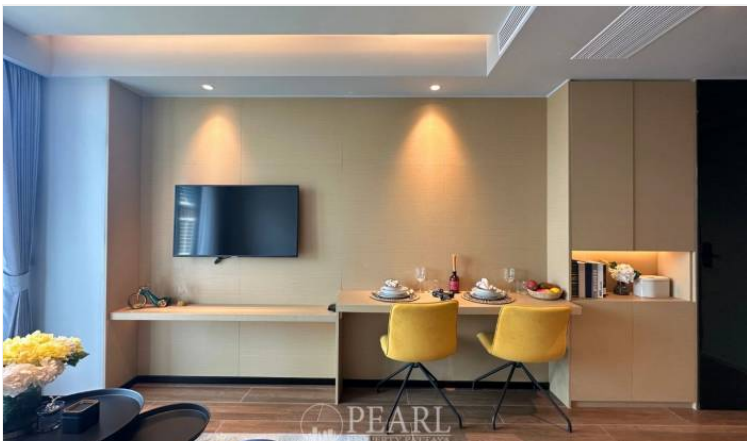
## Condition and Amenities

Facilities: Communal gym, sauna, two on-site restaurants, communal pool with sea view, sky garden, sky bar, mini-golf, passenger elevators, intelligent car parking, Wi-Fi, and a 24-hour security system with CCTV.

# Photo Gallery

---







# Property Details

---

- **Property Type:** Condo
- **Location:** Pattaya, Bang Lamung, Thailand
- **Internal Area:** 35m<sup>2</sup>
- **Price:** ฿3,990,000
- **Bedrooms:** 1
- **Bathrooms:** 1

# Property Features

---

- Security
- Gym
- Sauna
- Swimming Pool
- Air Conditioning
- Balcony
- Car Park
- Electricity
- Integral Kitchen
- Internet
- Alarm
- Children's Area
- Concierge
- Guardhouse
- Lift
- Equipped Kitchen
- Disabled Access
- Library

# Location

---



image not found or type unknown