

# Baan Plai Haad Condo - 2Bed 2Bath

Pattaya, Bang Lamung, Thailand  
Reference: 975

฿9,500,000



2 Bedrooms



2 Bathrooms



Condo

# Property Description

**Pearl Property presents** a stunning **2-bedroom beachfront condo** at the highly sought-after **Baan Plai Haad Wongamat**, located in one of Pattaya’s most exclusive neighborhoods. This beautiful unit on the **9th floor** offers breathtaking **sea views and direct views of the Sanctuary of Truth**, combining luxury living with unbeatable scenery.

Spanning **73 sq.m.**, the condo features **2 bedrooms and 2 bathrooms**, and comes **fully furnished**—ready to move in or rent out as a high-demand investment property.

**Unit Details:**

- 73 sq.m. | 9th Floor
- 2 bedrooms | 2 bathrooms
- Sea view & Sanctuary of Truth view
- Fully furnished: sofa, refrigerator, washing machine

**Facilities at Baan Plai Haad:**

- Large **swimming pool**
- Fully equipped **gym**
- 24-hour security
- Keycard access and private parking

Located in the **prestigious Wongamat - Naklua area**, this condo is just minutes from beachfront restaurants, trendy cafes, and central Pattaya.

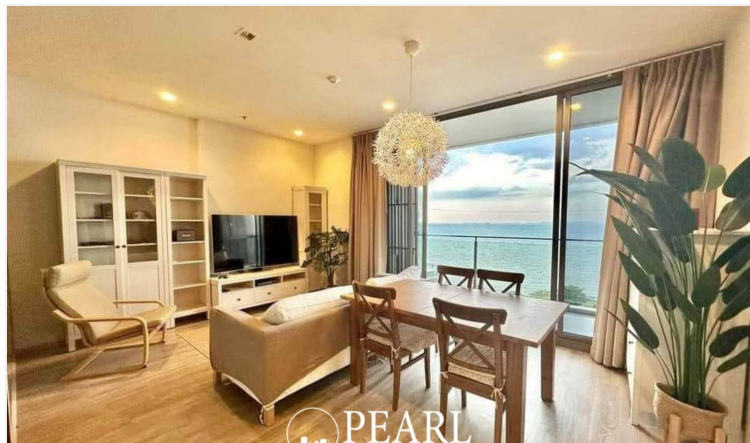
**Price: 9,500,000 THB** — Rare sea-view unit in a prime location!

**Contact us today to schedule a private viewing or request more information**

## Photo Gallery

---





# Property Details

---

- **Property Type:** Condo
- **Location:** Pattaya, Bang Lamung, Thailand
- **Internal Area:** 73m<sup>2</sup>
- **Price:** ฿9,500,000
- **Bedrooms:** 2
- **Bathrooms:** 2

# Property Features

---

- Security
- Gym
- Jacuzzi
- Sauna
- Swimming Pool
- Air Conditioning
- Balcony
- Car Park
- Electricity
- Integral Kitchen
- Internet
- Alarm
- Children's Area
- Concierge
- Guardhouse
- Lift
- Roof Garden
- Equipped Kitchen
- Disabled Access
- Library

# Location

---

