

Aeras Beachfront Condominium - 1 Bed

1Bath

Pattaya, Nong Prue, Thailand
Reference: 3222

฿5,600,000



1 Bedrooms



1 Bathrooms



Condo

Property Description

Pearl Property presents this stunning **1-bedroom beachfront condo at Aeras Beachfront Condominium**, located directly on **Jomtien Beach** between Soi 17 and 18. Perfectly positioned on the **7th floor**, this unit offers **unobstructed sea views** from a spacious balcony—ideal for enjoying Pattaya’s beautiful sunsets.

This **46.5 sq.m. Thai-quota unit** is thoughtfully designed and **fully furnished** with high-quality **built-in furniture**, including a large wardrobe, custom storage, wall paneling, and a dining set. The open-plan layout combines style and functionality, making it a perfect seaside residence or investment property.

Property Features:

- 1 bedroom | 1 bathroom with rain shower
- Spacious balcony with **direct sea view**
- **High-quality built-in furniture** throughout

- Fully equipped with appliances:

- 42" and 32" TVs

- Refrigerator

- Washing machine

- Microwave

Outstanding Facilities at Aeras:

- Infinity-edge **swimming pool**

- Fitness room & yoga studio

-

Steam room & kid's playroom

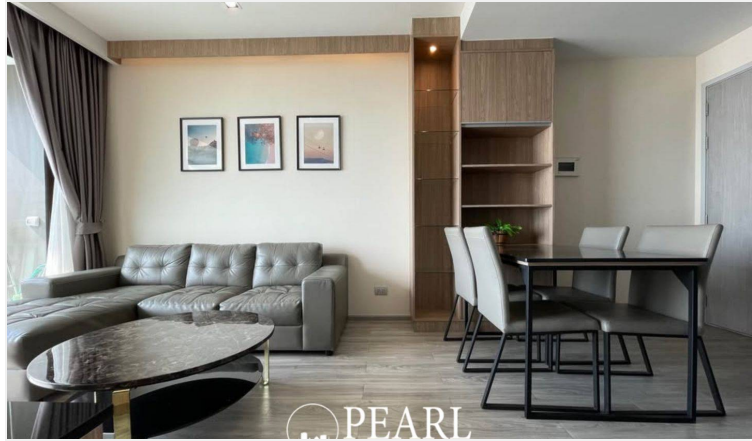
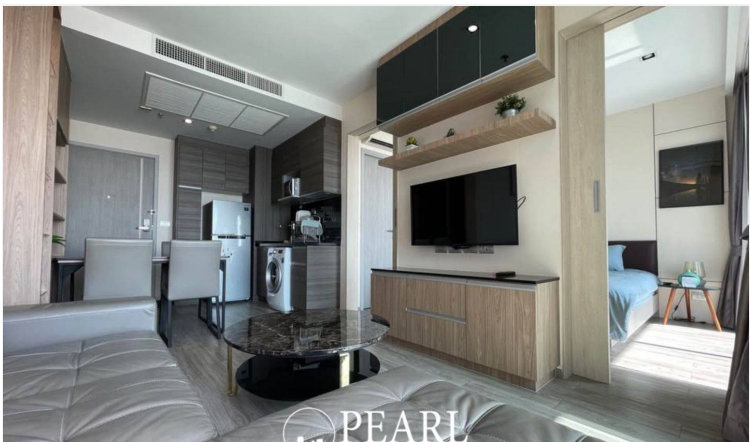
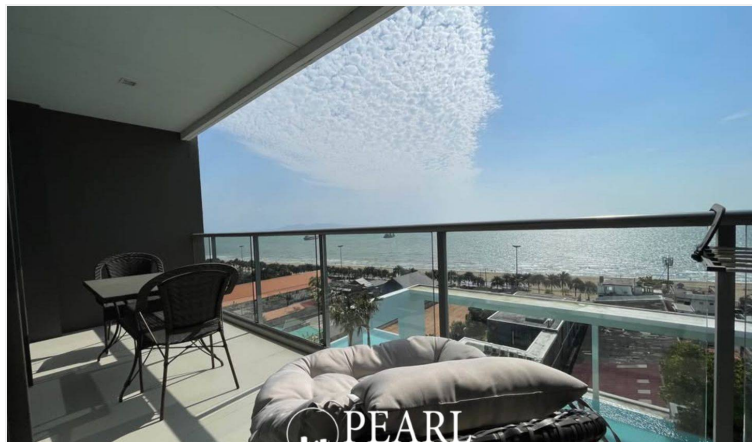
- Pool table, library, and garden
- Outdoor **basketball court**
- 24-hour security and private beach access

This beachfront condo combines **resort-style living** with modern comfort in one of **Pattaya's most desirable coastal locations**.

Transfer fee 50/50.

Contact us today to arrange a private viewing or request more details!

Photo Gallery





Property Details

- **Property Type:** Condo
- **Location:** Pattaya, Nong Prue, Thailand
- **Internal Area:** 46.5m²
- **Price:** ฿5,600,000
- **Bedrooms:** 1
- **Bathrooms:** 1

Property Features

- Security
- Gym
- Sauna
- Swimming Pool
- Air Conditioning
- Balcony
- Car Park
- Electricity
- Alarm
- Lift

Location

