

Palm Wongamat 3-Bed Penthouse

Pattaya, Nong Prue, Thailand
Reference: 4176

฿65,000,000



3 Bedrooms



4 Bathrooms



Condo

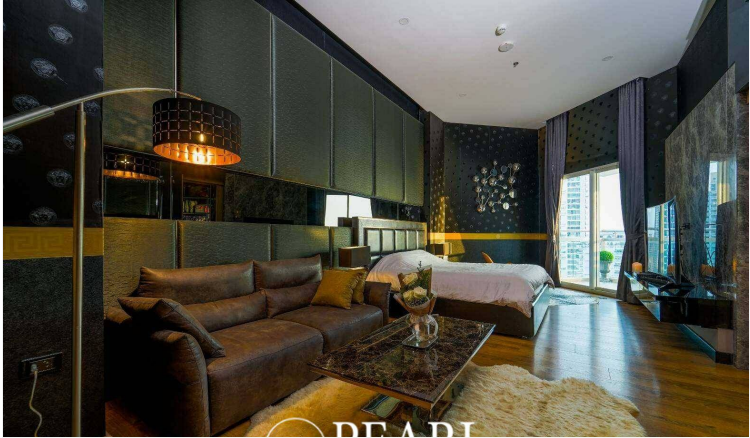
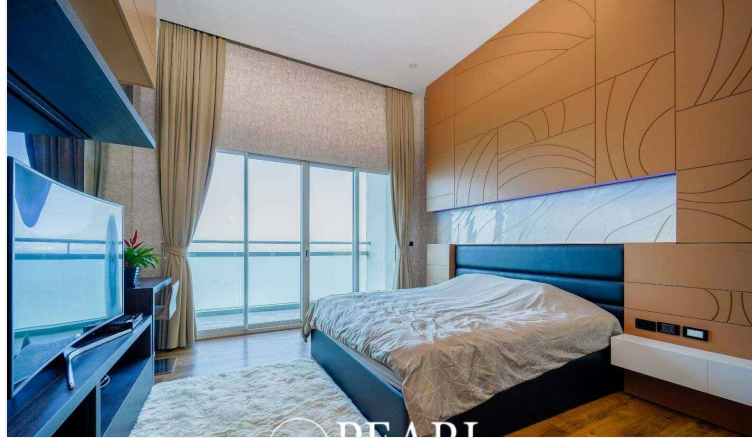
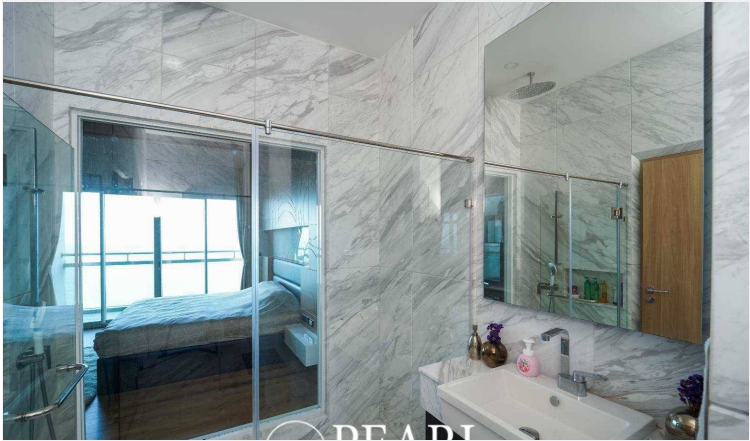
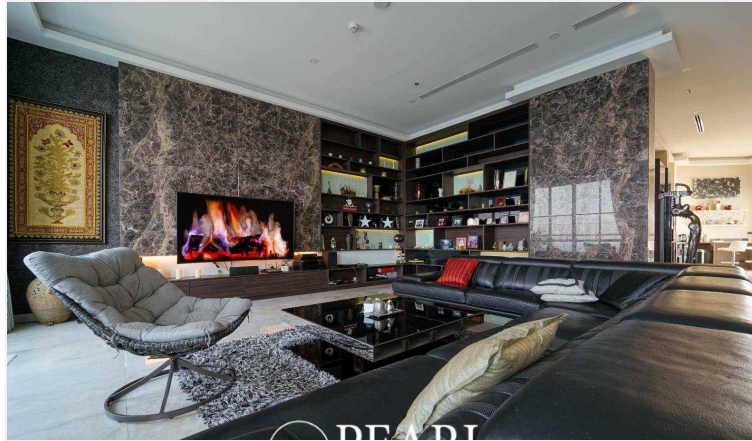
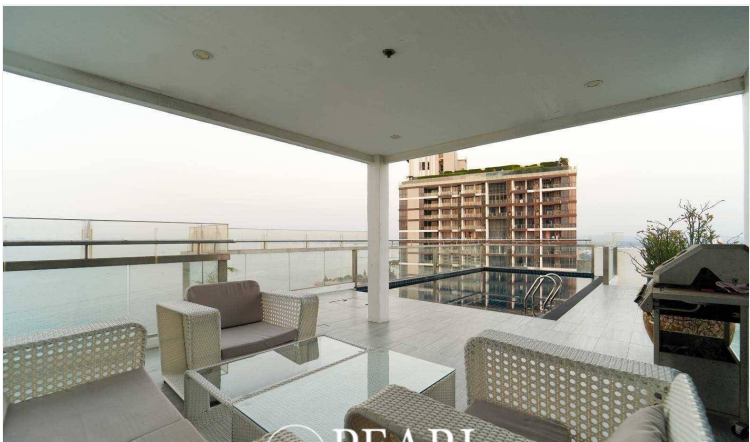
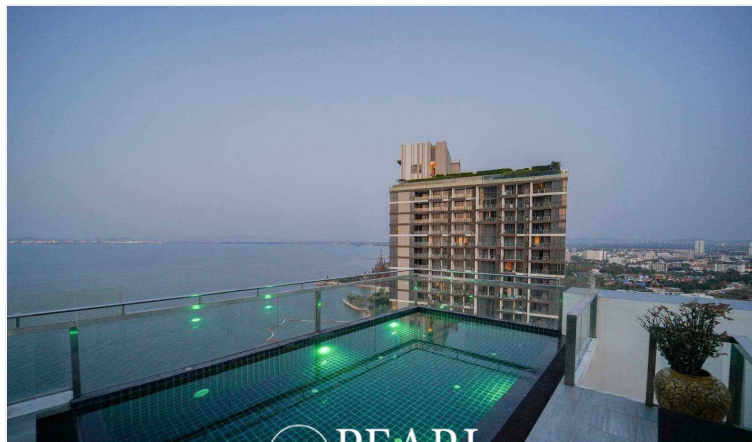
Property Description

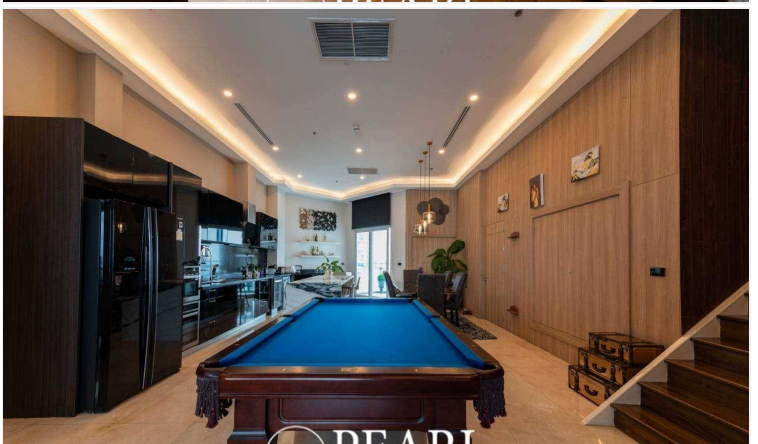
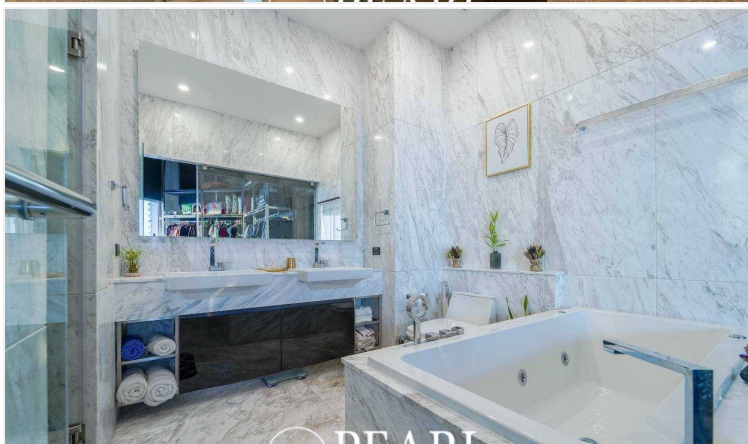
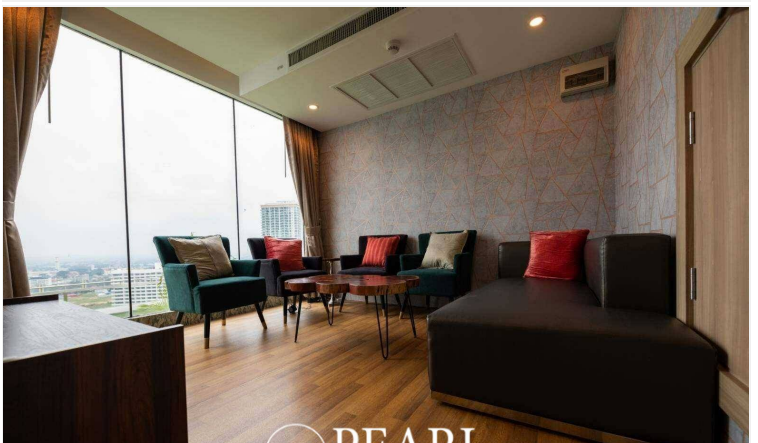
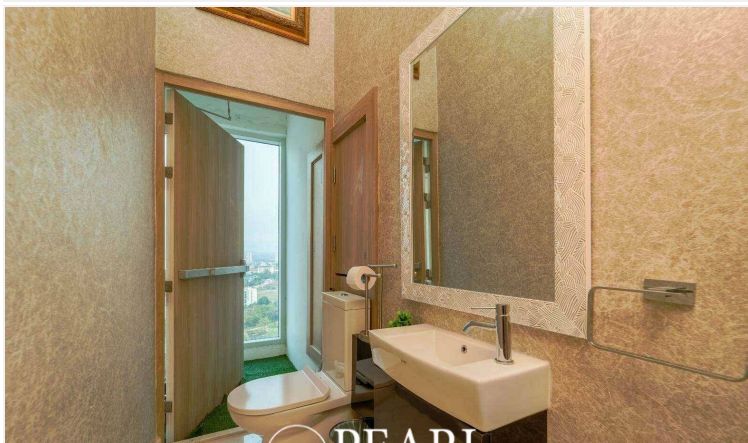
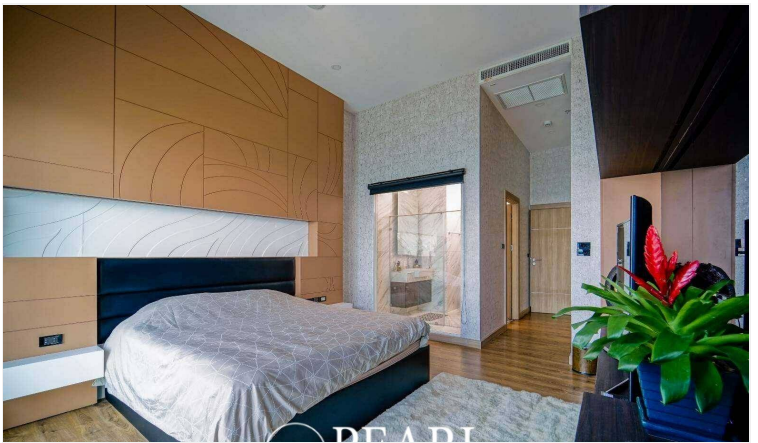
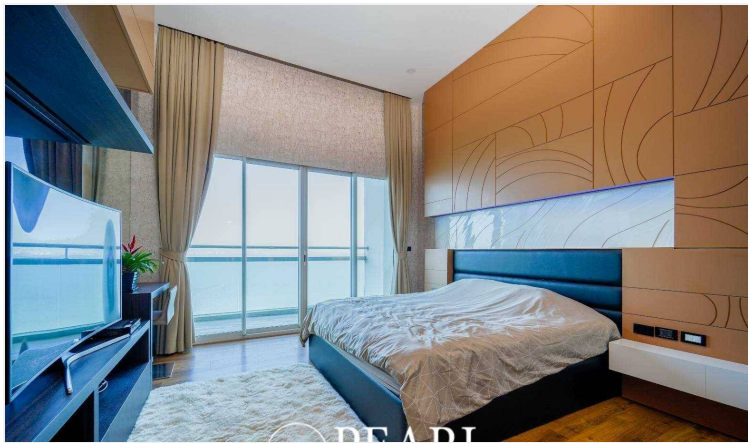
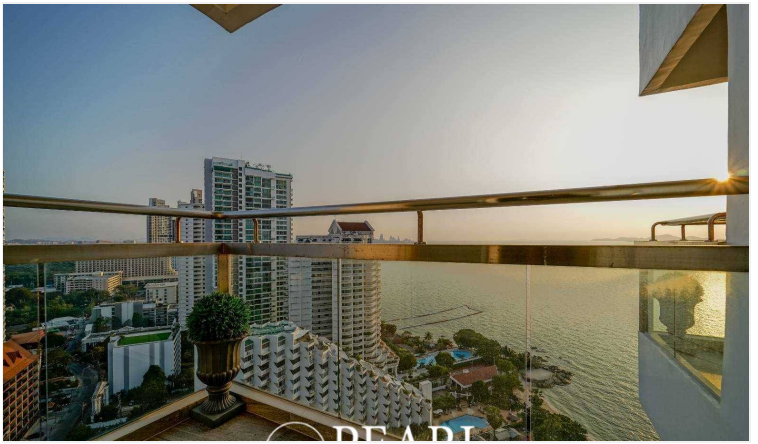
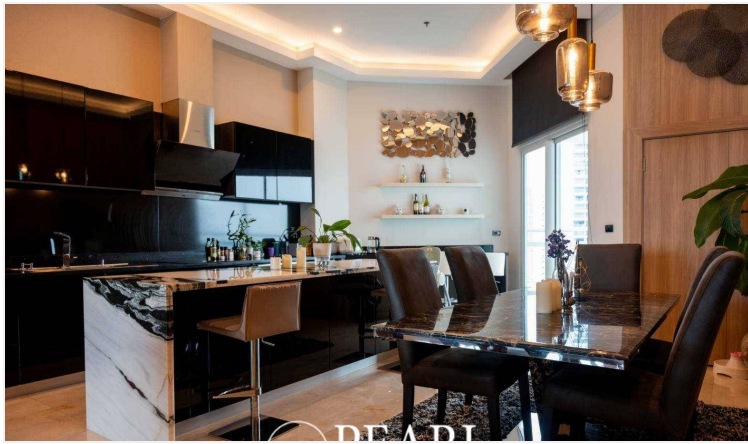
- 3 bedrooms, 4 bathrooms, expansive penthouse with 331 sqm of luxurious living space
- Located on the 28th floor, offering breathtaking panoramic sea views
- Private swimming pool and spacious outdoor terrace perfect for relaxation and entertaining
- High-end finishes throughout, including a fully furnished interior with elegant and modern design
- Master suite features a large walk-in closet and en-suite bathroom
- Open-concept living and dining area with floor-to-ceiling windows that capture stunning ocean views
- Gourmet kitchen equipped with state-of-the-art appliances and sleek cabinetry
- Situated in the prestigious Palm Wongamat Condominium, right on Wong Amat Beach, North Pattaya
- Resort-style amenities, including a beachfront pool, fitness center, and direct beach access
- Ideal location close to shopping, dining, and entertainment options

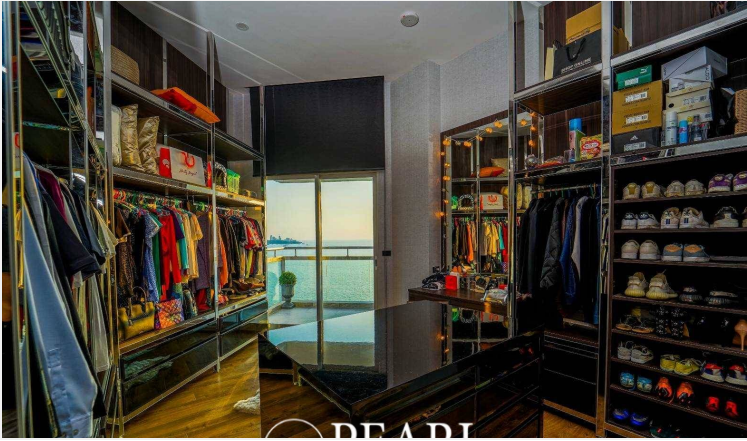
Discover the epitome of luxury living in this stunning 331 sqm, fully furnished penthouse located on the 28th floor of the prestigious Palm Wongamat Condominium, nestled right on Wong Amat Beach in North Pattaya. This elegant 3-bedroom, 4-bathroom residence boasts unparalleled panoramic sea views from every room. The spacious, open-concept living and dining areas are framed by floor-to-ceiling windows that flood the space with natural light and offer unobstructed views of the ocean. Step outside to your private terrace, complete with a swimming pool, where you can entertain guests or simply unwind while taking in the breathtaking coastal scenery. The high-end finishes throughout the home, combined with modern furnishings, create a sophisticated and inviting atmosphere. The master suite features a luxurious en-suite bathroom and a walk-in closet, providing ample storage. The gourmet kitchen is equipped with top-of-the-line appliances and sleek cabinetry, perfect for cooking and entertaining. Residents of the Palm Wongamat Condominium enjoy exclusive access to resort-style amenities, including a beachfront pool, state-of-the-art fitness center, and direct beach access. Situated in a prime location, you'll be just moments away from the vibrant shopping, dining, and entertainment options that North Pattaya has to

offer. This penthouse is the perfect blend of luxury, comfort, and convenience.

Photo Gallery







Property Details

- **Property Type:** Condo
- **Location:** Pattaya, Nong Prue, Thailand
- **Internal Area:** 331m²
- **Price:** ~~฿~~**65,000,000**
- **Bedrooms:** 3
- **Bathrooms:** 4

Property Features

- Security
- Gym
- Jacuzzi
- Sauna
- Swimming Pool
- Air Conditioning
- Balcony
- Car Park
- Electricity
- Integral Kitchen
- Internet
- Alarm
- Children's Area
- Concierge
- Guardhouse
- Lift
- Office
- Equipped Kitchen
- Terrace
- Disabled Access
- Library

Location

