

Zenith

Muang Pattaya, Thailand

Reference: 1209

฿2,799,000



1 Bedrooms



0 Bathrooms



Condo

Property Description

Zenith Pattaya Condominium is a forthcoming low-rise development that seamlessly blends luxury living with wellness amenities. Situated just off Thappraya Road Soi 15, opposite Pratumnak Hill, and a little over 1 kilometer from Walking Street, it offers residents both tranquility and proximity to Pattaya's vibrant attractions.

Key Features:

- **Wellness-Centric Amenities:** Embracing a Japanese spa and wellness theme, the condominium will feature a full-sized Onsen spa complete with traditional baths, providing residents with a serene retreat.
- **Fitness and Recreation:** A state-of-the-art Technogym fitness center caters to health enthusiasts, while expansive swimming pools and relaxation zones offer spaces for leisure and rejuvenation.
- **Dining and Social Spaces:** On-site bar and restaurant facilities ensure that residents can enjoy exquisite dining experiences without leaving the comfort of their community.

Location Highlights:

- **Convenient Access:** The prime location provides easy access to public transport, making commutes around Pattaya seamless.
- **Proximity to Attractions:** With Walking Street just over a kilometer away, residents are close to some of Pattaya's finest restaurants and entertainment venues, all within walking distance.

Investment Opportunity:

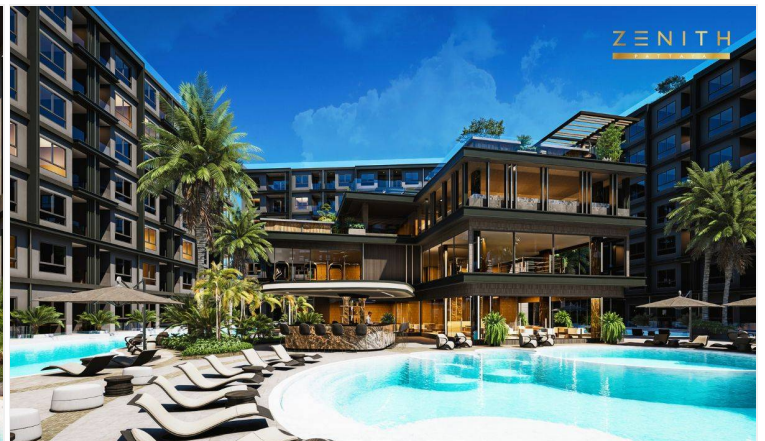
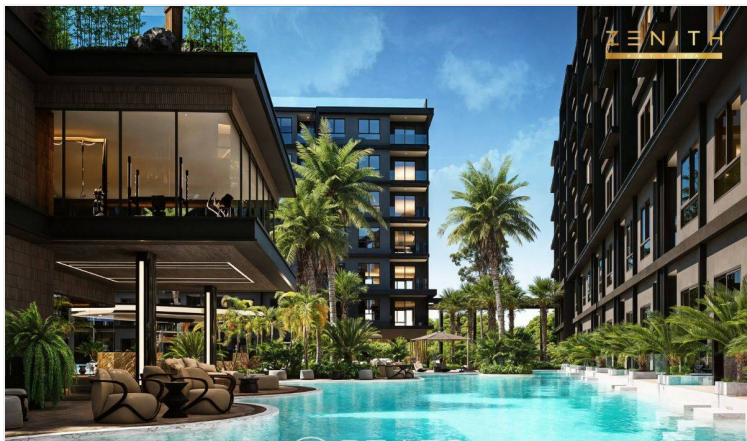
Zenith Pattaya Condominium is currently open for pre-sale, with completion anticipated in the fourth quarter of 2028. The development offers a range of fully furnished units, including:

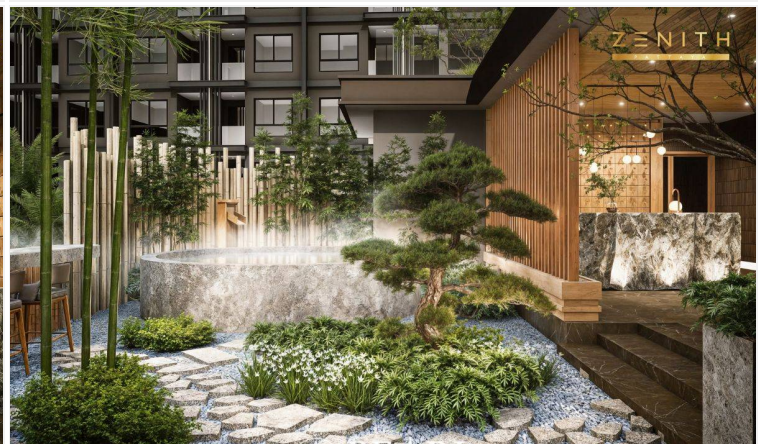
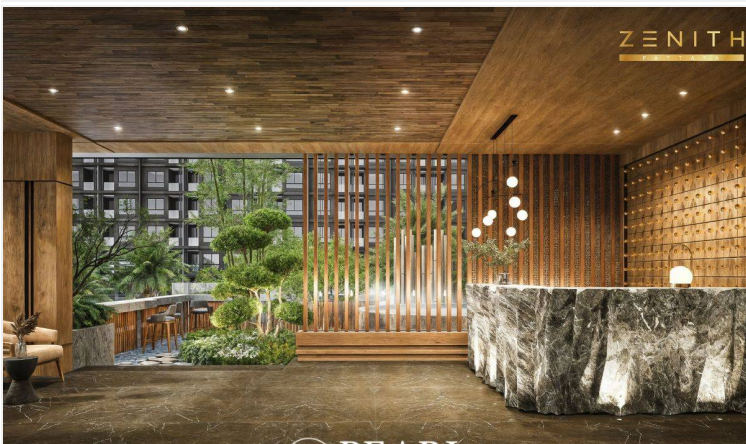
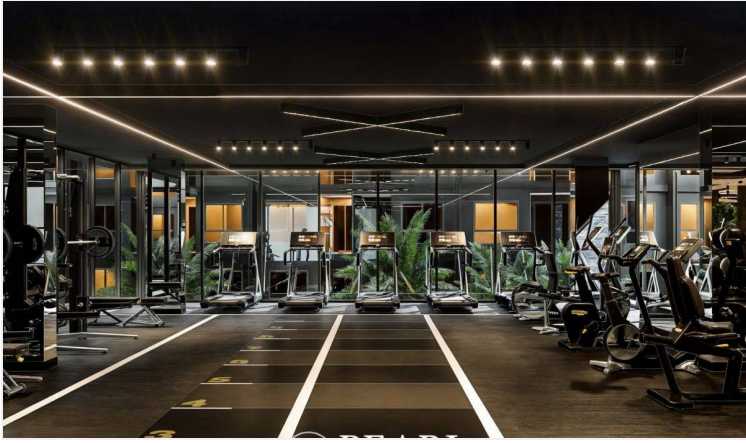
- **1-Bedroom Units:** Starting from approximately 2,799,000 THB for city views and 2,990,000 THB for pool views.

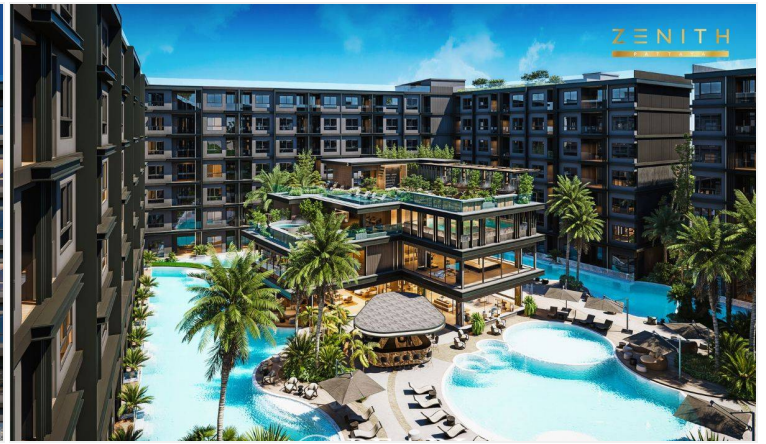
- **2-Bedroom Units:** Starting from approximately 6,049,000 THB for city views and 6,490,000 THB for pool views.

Developer financing options are available, making it an attractive prospect for investors and homebuyers seeking a blend of luxury and wellness in Pattaya's dynamic real estate market.

Photo Gallery







Property Details

- **Property Type:** Condo
- **Location:** Muang Pattaya, Thailand
- **Land Area:** 9600m²
- **Price:** ฿2,799,000
- **Bedrooms:** 1
- **Bathrooms:** 0

Property Features

- Security
- Gym
- Jacuzzi
- Sauna
- Swimming Pool
- Air Conditioning
- Balcony
- Car Park
- Electricity
- Integral Kitchen
- Internet
- Alarm
- Children's Area
- Concierge
- Guardhouse
- Lift
- Roof Garden
- Equipped Kitchen
- Terrace
- Disabled Access

Location

