

Wongamat Exclusive Place

Muang Pattaya, Thailand

Reference: 5196

฿11,900,000

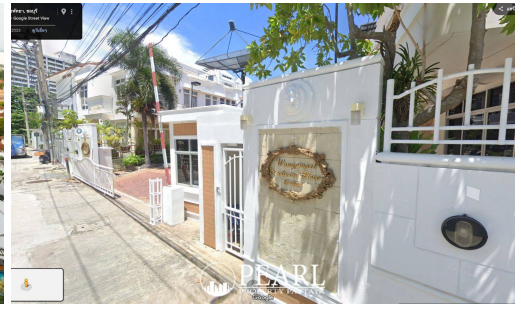




3 Bedrooms



0 Bathrooms



Villa

Property Description

Pearl Property presents Wongamat Exclusive Place - Luxury 3-Storey Townhomes Near Wong Amat Beach

Experience refined coastal living at *Wongamat Exclusive Place*, a boutique collection of premium townhomes located in the quiet and upscale neighborhood of Na Kluea Soi 16, just minutes from Wong Amat Beach. This exclusive development offers privacy, space, and convenience—ideal for those who seek a peaceful retreat with easy access to central Pattaya.

Project Overview:

- Type: 3-storey luxury townhomes
- Total units: Approximately 5-11
- Usable area: Around 200 sqm per unit
- Land size: Approx. 80 sqm per unit

- Layout: 3 bedrooms, 4 bathrooms
- Sale prices: From approx. 3.99 to 10.9 million THB
- Rental prices: From approx. 60,000 THB/month
- Availability: Units for both sale and rent

Each unit comes fully furnished with a modern European kitchen, open-plan living and dining areas, private balconies, and in some units—an exclusive rooftop terrace offering views of the sea and Pattaya skyline.

Facilities Include:

- Communal swimming pool
- Private parking
-

Landscaped garden

- 24-hour security with CCTV

Prime Location Benefits:

- Just 8 minutes to Terminal 21 and Pattaya Beach
- 10 minutes to Sukhumvit Road
- Close to local seafood restaurants, cafes, and shops
- Steps from the peaceful shores of Wong Amat Beach

Wongamat Exclusive Place offers the rare opportunity to own or rent a luxury townhome in one of Pattaya’s most sought-after residential areas—ideal for full-time living or as a seaside investment.

Contact us today to schedule a private viewing or request more information.

Photo Gallery



Property Details

- **Property Type:** Villa
- **Location:** Muang Pattaya, Thailand
- **Land Area:** 1000m²
- **Price:** ~~฿~~**11,900,000**
- **Bedrooms:** 3
- **Bathrooms:** 0

Property Features

- Swimming Pool
- Air Conditioning
- Balcony
- Car Park
- Electricity
- Integral Kitchen
- Equipped Kitchen

Location

