

Winston Village

Pattaya, Bang Lamung, Thailand
Reference: 310

฿3,890,000



3 Bedrooms

0 Bathrooms

Villa

Property Description

- 1. Introduction:** Welcome to Winston Village, a modern and exclusive housing development that combines contemporary living with a touch of American suburban charm. Located in the thriving area of East Pattaya, this project is renowned for its unique designs and high-quality finishes, offering an ideal living experience for those seeking a blend of style, comfort, and convenience.

- 2. Location and Neighborhood:** Winston Village is strategically positioned in Nong Prue, Pattaya, offering easy access to major roads like Sukhumvit. This location ensures residents are close to essential amenities while enjoying the serenity of a well-planned, peaceful community. The area's American suburban feel adds a unique character, setting it apart from typical Pattaya neighborhoods. The project's completion in August 2017 marks its recent entry into the vibrant Pattaya real estate landscape.

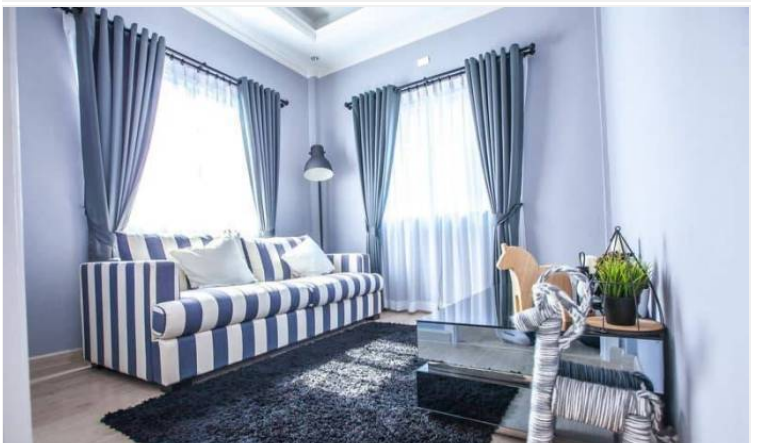
- 3. Property Details:** The development features a range of house types, including options with 3 bedrooms and 2 bathrooms, and larger units offering 4 bedrooms and 3 bathrooms. The sizes of these homes vary, ranging from 157 to 225 square meters of usable area, catering to different family sizes and lifestyle needs. The two-story design of these homes is both practical and aesthetically pleasing, ensuring a comfortable living space for residents.

4. **Condition and Amenities:** Each home in Winston Village is characterized by its modern design and quality finishes, reflecting the developer's commitment to excellence. The open-plan living areas provide a spacious feel, and the inclusion of Western-style kitchens adds to the overall appeal and functionality of these homes. The village's overall ambiance is enhanced by its well-maintained condition, ensuring a pleasant living environment for all residents.

5. **Financial Information:** The homes in Winston Village are available for purchase, with prices starting from approximately ฿3,890,000. This price range offers great value for the quality and location, making it an attractive option for both homebuyers and investors. The pricing reflects the desirability of the area and the quality of the development.

6. **Contact Information:** For more information or to schedule a visit to Winston Village, please contact Pearl Property at:
 - Tel: +66-33-135-053
 - Whatsapp: +66-33-135-053
 - Line: @pearlproperty
 - Email: info@pearlpropertypattaya.com

Photo Gallery







Property Details

- **Property Type:** Villa
- **Location:** Pattaya, Bang Lamung, Thailand
- **Land Area:** 10000m²
- **Price:** ฿3,890,000
- **Bedrooms:** 3
- **Bathrooms:** 0

Property Features

- Security
- Swimming Pool
- Air Conditioning
- Balcony
- Car Park
- Electricity
- Integral Kitchen
- Internet
- Alarm
- Children's Area
- Guardhouse
- Equipped Kitchen

Location

