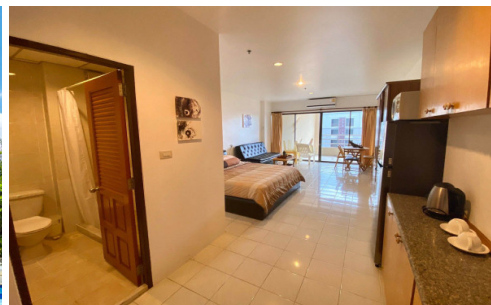


# View Talay 3 - Studio Sea View (5th floor)

Pattaya, Pratamnak, Thailand

Reference: 12138

## ฿2,950,000



1 Bedrooms

1 Bathrooms

Condo

# Property Description

---

View Talay 3 is a real beachfront project coming with private beach access to Dongtan Beach. It is situated in a prime location surrounded by many amenities such as Pattaya Water Park, Big Buddha Temple, and Phra Tamnak Hill Viewpoint. This unit offers a fully furnished room with a stunning sea view from your balcony on the 5th floor in Building A. Full of common areas available including a swimming pool, car parking space, and 24 hours security system.

# Photo Gallery

---





## Property Details

---

- **Property Type:** Condo
- **Location:** Pattaya, Pratamnak, Thailand
- **Internal Area:** 48m<sup>2</sup>
- **Land Area:** 0m<sup>2</sup>
- **Price:** ฿2,950,000
- **Bedrooms:** 1
- **Bathrooms:** 1

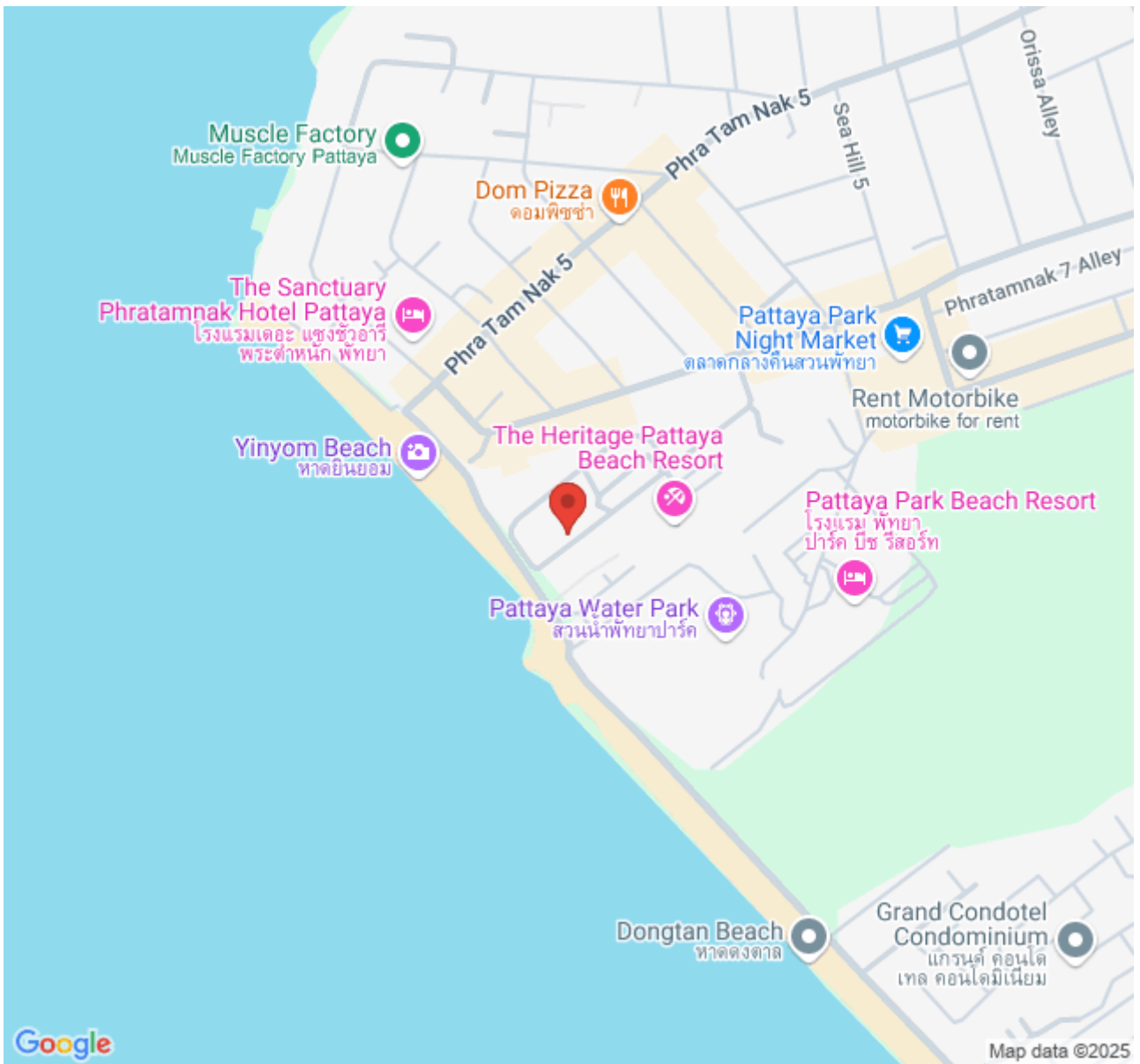
## Property Features

---

- Security
- Swimming Pool
- Air Conditioning
- Balcony
- Car Park
- Electricity
- Alarm
- Guardhouse
- Lift
- Equipped Kitchen

## Location

---



Muscle Factory  
Muscle Factory Pattaya

Dom Pizza  
ดอมพิซซ่า

The Sanctuary  
Phratamnak Hotel Pattaya  
โรงแรมเดอะ แซงซัวารี  
พระตำหนัก พัทยา

Yinyom Beach  
หาดยีนยอม

The Heritage Pattaya  
Beach Resort

Pattaya Water Park  
สวนน้ำพัทยาปาร์ค

Pattaya Park Beach Resort  
โรงแรม พัทยา  
ปาร์ค บีช รีสอร์ท

Dongtan Beach  
หาดดงตาล

Grand Condotel  
Condominium  
แกรนด์ คอนโด  
เทล คอนโดมิเนียม

Pattaya Park  
Night Market  
ตลาดกลางคืนสวนพัทยา

Rent Motorbike  
motorbike for rent

Google

Map data ©2025