

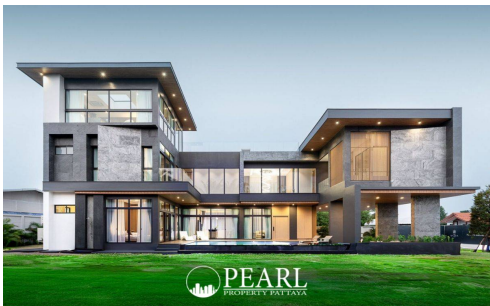
The Sylva Pattaya - 4 Bed 5 Bath

Muang Pattaya, Thailand
Reference: 1062

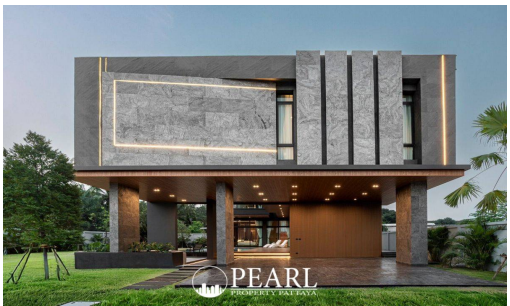
฿39,900,000



4 Bedrooms



5 Bathrooms



Villa

Property Description

Pearl Property presents a refined 4-bedroom luxury pool villa at The Sylva Pattaya - where modern elegance meets tranquil living in Huai Yai.

Step into sophisticated tropical living with this stunning **4-bedroom, 5-bathroom** private pool villa in the prestigious **The Sylva Pattaya**—an exclusive gated community of just eight homes. Nestled in a peaceful enclave off Huai Yai Road (Tetsaban Soi 27), this villa is the perfect fusion of sleek contemporary architecture and serene outdoor living.

Set on a **555.88 sqm land plot**, the home boasts an impressive **705 sqm of interior space** across three levels, offering expansive layouts and thoughtful design that balances style, function, and flow.

Property Highlights:

- 4 spacious bedrooms plus a versatile den
- 5 luxurious bathrooms
-

Soaring double-volume living area

- Maid's quarters, utility room, and storage
- European kitchen with island and separate spice kitchen
- Lounge bar for entertaining
- Smart home technology integration

Outdoor Features:

- Private saltwater infinity pool
- Landscaped tropical garden
-

Expansive terrace and rooftop deck

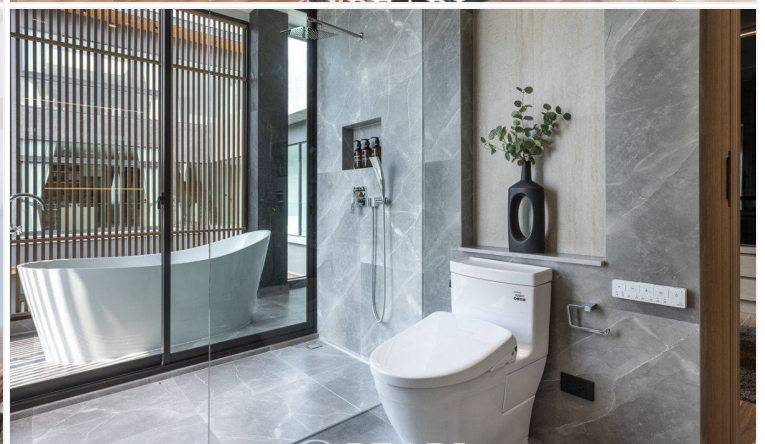
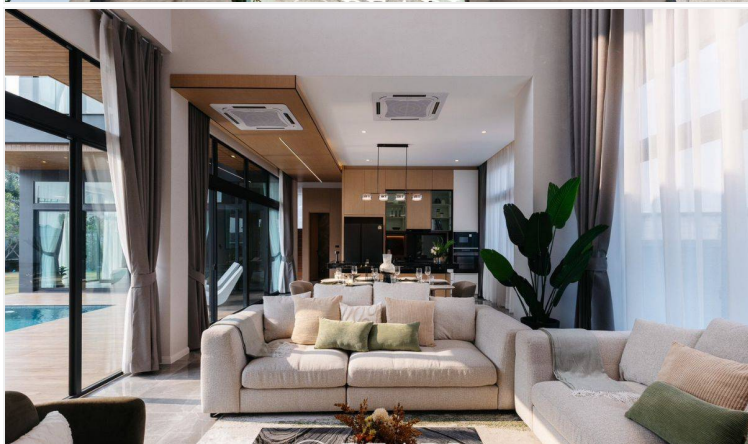
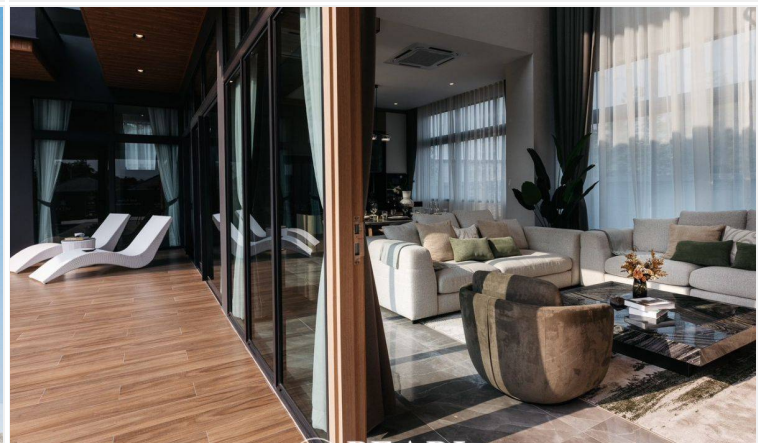
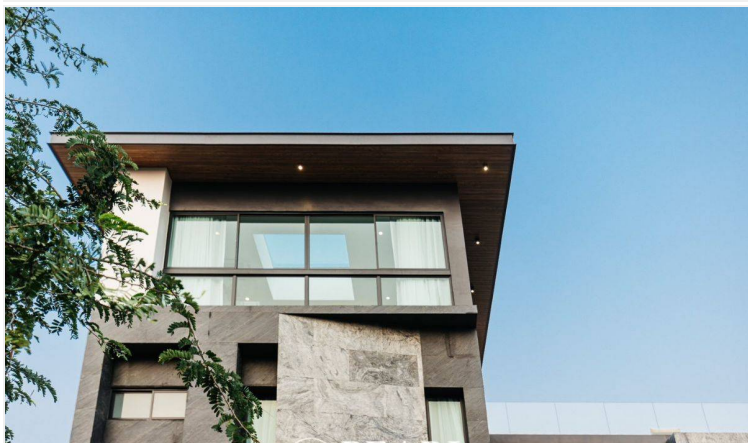
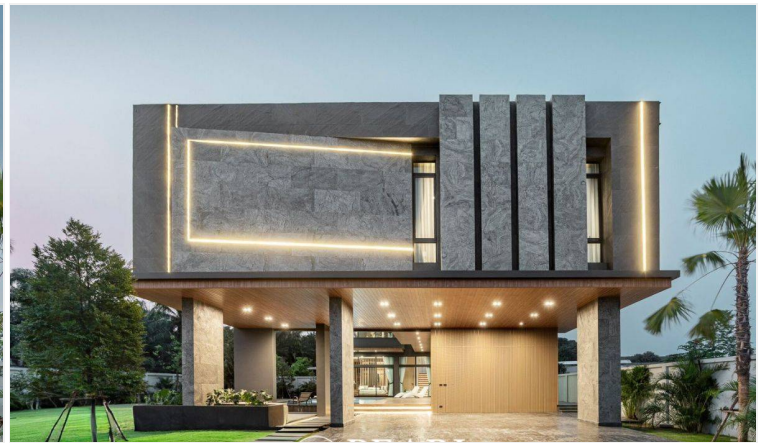
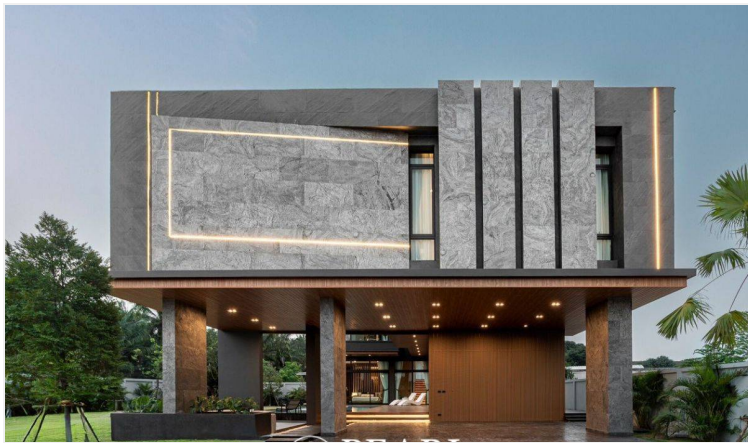
- Covered parking for up to 3 vehicles

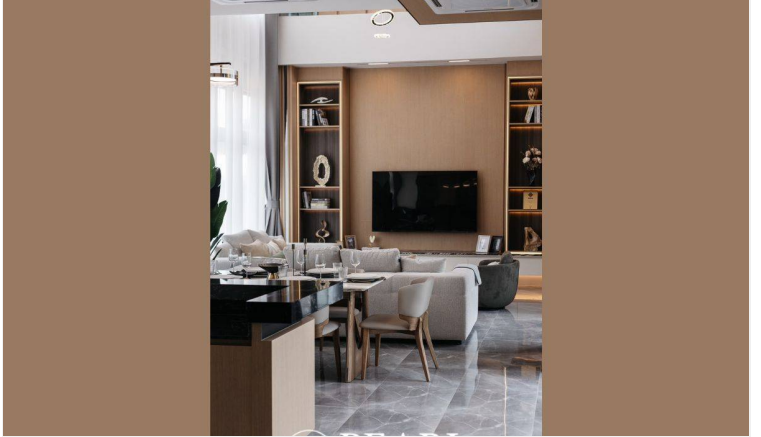
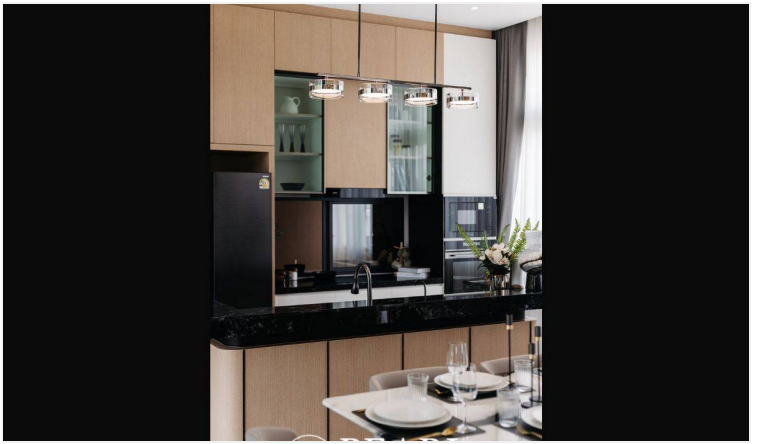
Located just minutes from key lifestyle destinations like **Jomtien Beach**, **Pattaya Floating Market**, and **Siam Country Club**, this villa offers the privacy of a peaceful residential neighborhood with convenient access to vibrant coastal attractions.

Whether you’re seeking a forever family home or a stylish Pattaya retreat, this villa offers an exceptional lifestyle investment in one of Pattaya’s most sought-after areas.

Contact us today to arrange a private viewing or schedule a virtual tour of this exceptional villa at The Sylva Pattaya.

Photo Gallery





Property Details

- **Property Type:** Villa
- **Location:** Muang Pattaya, Thailand
- **Internal Area:** 703m²
- **Land Area:** 556m²
- **Price:** ~~฿~~**39,900,000**
- **Bedrooms:** 4
- **Bathrooms:** 5

Property Features

- Security
- Jacuzzi
- Swimming Pool
- Air Conditioning
- Balcony
- Car Park
- Electricity
- Integral Kitchen
- Internet
- Alarm
- Guardhouse
- Lift
- Office
- Roof Garden
- Equipped Kitchen
- Terrace

Location

