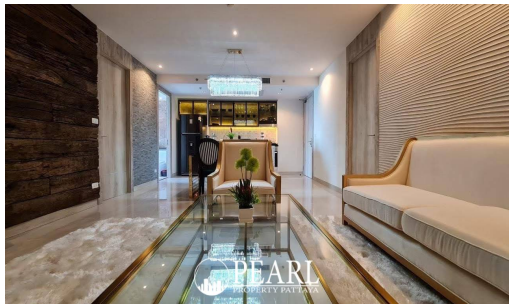


# The Riviera Monaco 2Bed - 2Bath Sea View ( Floor37 )

Pattaya, Nong Prue, Thailand  
Reference: 8798

฿16,000,000



2 Bedrooms

2 Bathrooms

Condo

# Property Description

Pearl Property presents this luxurious 2-bedroom, 2-bathroom corner unit on the 37th floor of the prestigious Riviera Monaco Condominium. This beautifully designed high-floor residence spans 88 sqm, offering sweeping panoramic sea and city views from nearly every room—ideal for both private living or high-end investment.

For Sale: THB 16,000,000  
For Rent (1-year contract only): THB 80,000/month  
Terms: 2-month deposit + 1-month advance  
Agents welcome

## Unit Highlights

2 spacious bedrooms / 2 bathrooms

Size: 88 sqm | Floor: 37

Sea views from bedrooms and balcony

Bathtub with beach and city views

Fully equipped kitchen with modern appliances

Includes linens, towels, cookware, and more

Foreign quota available

## Furnishings & Features

# Pearl Property Pattaya

Large refrigerator

Washing machine

Electric water kettle

Blender, pots, plates, cutlery, and glasses

2 sets of bed linen, towels included

Fiber-optic high-speed internet (1000/750 Mbps) in common areas

## Project Facilities

Swimming pools on 1st and 21st floors

Fully equipped fitness center

Tennis court

Nature-view terrace on 31st floor

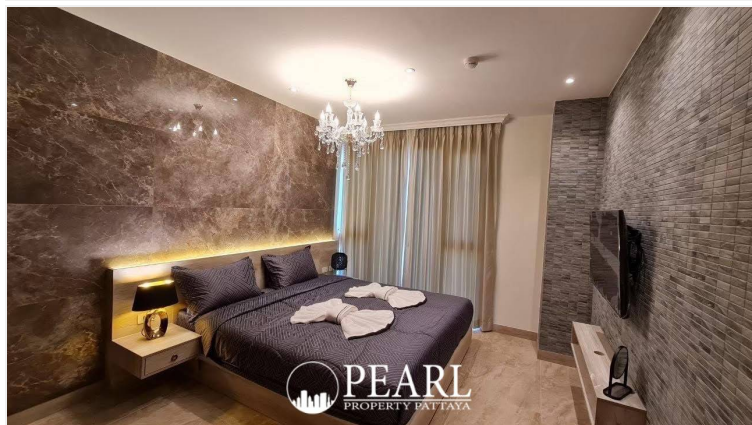
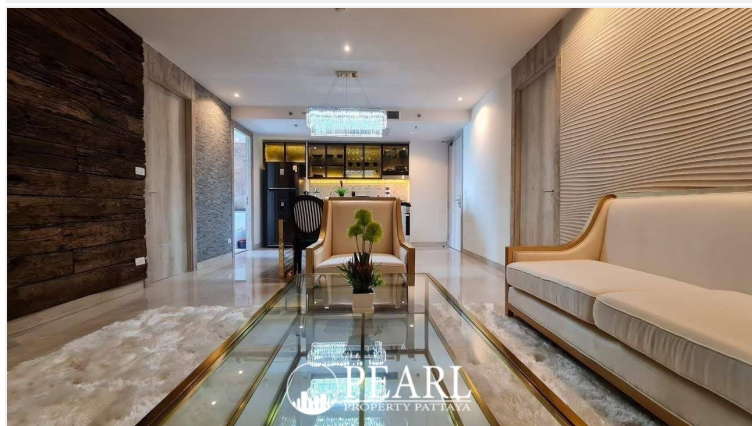
24-hour security and concierge services

Located just moments from Na Jomtien Beach, Riviera Monaco offers resort-style living in one of Pattaya’s most serene and desirable neighborhoods. This is the perfect home for sea lovers or those seeking unmatched coastal comfort.

Contact us today to arrange a private viewing or request a virtual tour.



# Photo Gallery





## Property Details

---

- **Property Type:** Condo
- **Location:** Pattaya, Nong Prue, Thailand
- **Internal Area:** 88m<sup>2</sup>
- **Price:** ฿16,000,000
- **Bedrooms:** 2
- **Bathrooms:** 2

## Property Features

---

- Security
- Gym
- Jacuzzi
- Sauna
- Swimming Pool
- Air Conditioning
- Balcony
- Car Park
- Electricity
- Alarm
- Children's Area
- Lift

## Location

---



