

# The Riviera Malibu - Type Duplex 2 (Showroom Unit) 4 Bed 4 Bath

pattaya, pratamnak, Thailand

Reference: 2042

## ฿19,000,000



4 Bedrooms

4 Bathrooms

Condo

# Property Description

---

**\*\*\* THESE IMAGES ARE FROM THE SHOW UNITS : 276 SQM. LUXURY SKY POOL HOME \*\*\***

Riviera Malibu Pattaya: A Blend of Luxury and Location

Introduction

Experience luxury living at Riviera Malibu Pattaya, an upscale high-rise condominium in the prestigious Pratumnak Hill area, set for completion in December 2026. Developed by the renowned Riviera Group, this project offers a perfect combination of comfort, style, and premium amenities.

Location and Neighborhood

Situated on a prime 4,300 square meter plot just 850 meters from the beach, Riviera Malibu is close to key attractions:

Suvarnabhumi International Bus Terminus: 6 minutes by car

Walking Street: 7 minutes by car

Pattaya Beach & Central Festival: 10 minutes by car

Pattaya International Hospital: 12 minutes by car

U-Tapao Airport: 45 minutes by car

Bangkok: 100 minutes by car

Property Details

The 30-story Riviera Malibu features 279 luxury apartments, including:

1-bedroom units: 31 to 47 sq.m.

2-bedroom units: 63 to 75 sq.m.

3-bedroom apartments: 112 to 114 sq.m.

Penthouse: 276 sq.m. with 4 bedrooms, a maid's room, and a private pool

Amenities

Enjoy a range of hotel-like facilities, including:

Ground-floor lobby and lounge

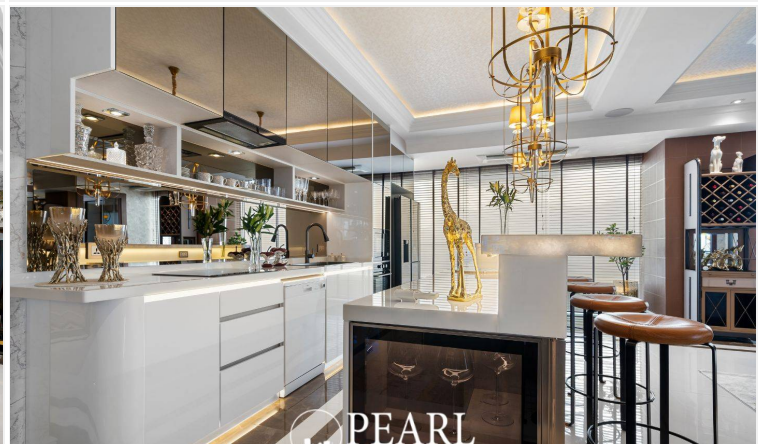
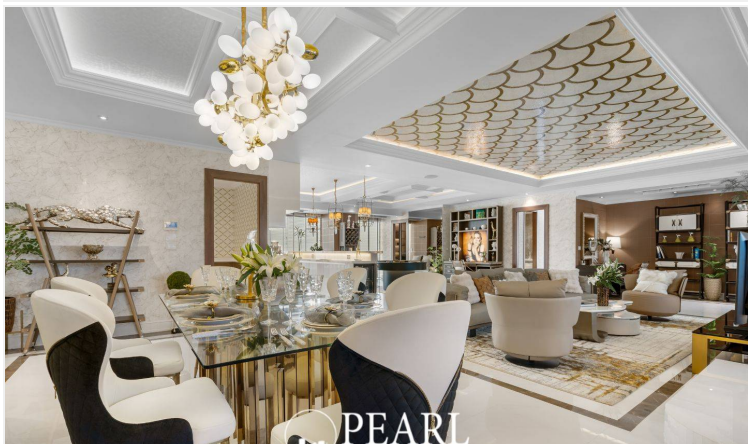
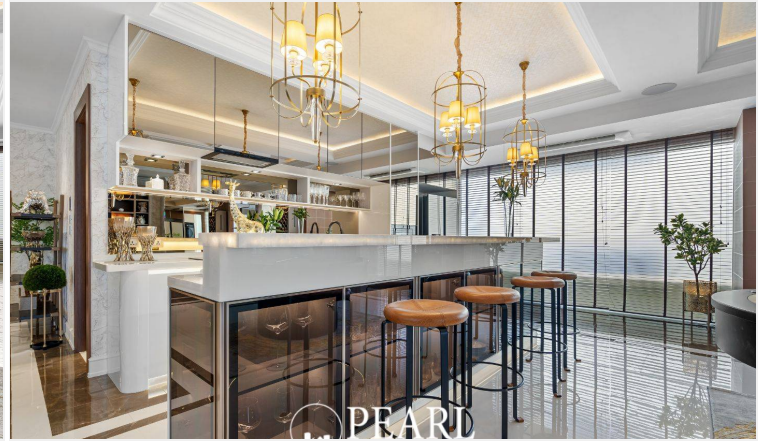
Sky pool and café bar on the 30th floor

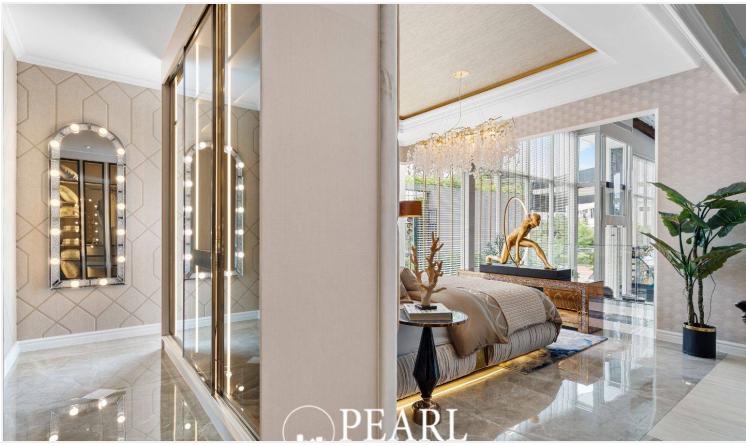
Japanese-style Onsen, bowling alley, private cinema, and golf simulators

Gymnasium and sky pool on the 18th floor

24-hour security and covered parking for 79 vehicles

# Photo Gallery

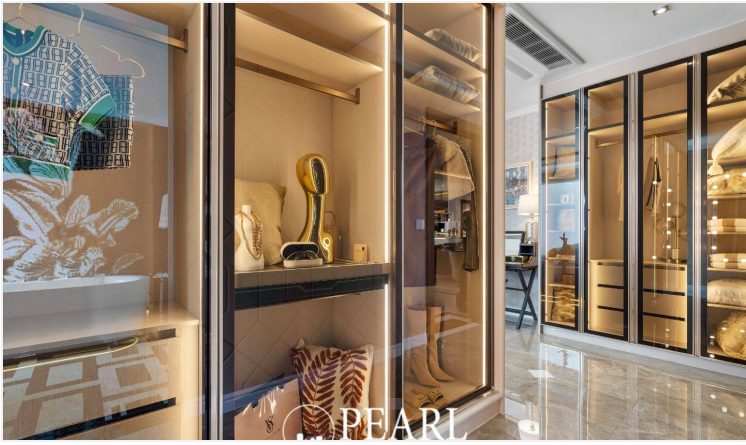




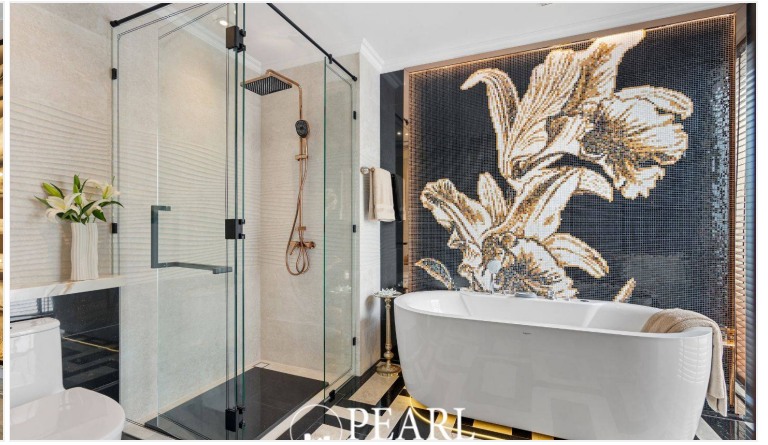
PEARL



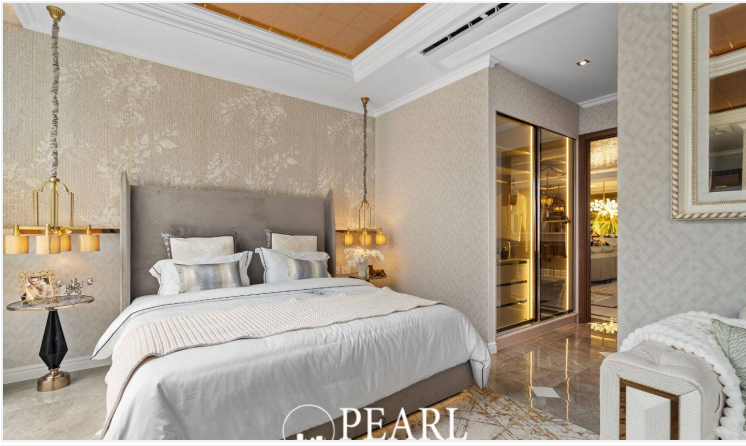
PEARL



PEARL



PEARL



PEARL



PEARL



PEARL

# Property Details

- **Property Type:** Condo
- **Location:** pattaya, pratamnak, Thailand
- **Internal Area:** 174m<sup>2</sup>
- **Price:** ฿19,000,000
- **Bedrooms:** 4
- **Bathrooms:** 4

# Location

