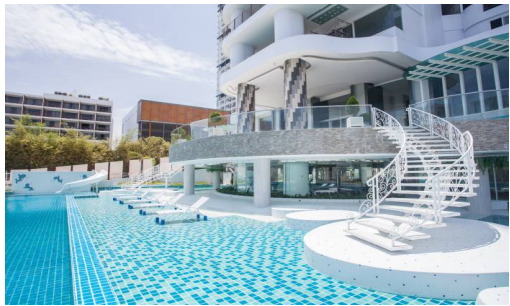


The Residences @ Dream Pattaya

Pattaya, Na Jomtien, Thailand
Reference: 223

฿4,878,000



1 Bedrooms

1 Bathrooms

Condo

Property Description

Residence @ Dream is an exclusive residential development situated on Najomtien Beach in Pattaya, Thailand. This modern development blends luxury and convenience, offering an ideal living experience for those seeking a sophisticated urban lifestyle.

Overview of the Property: Residence @ Dream stands as a testament to contemporary architectural design, offering a blend of elegance and modernity. The development comprises high-quality condominiums designed to cater to a diverse range of lifestyles, from singles and couples to families. Its prime location in Na Jomtien ensures residents are never far from the city's bustling activities, while also providing a tranquil escape within its walls.

Property Details:

- **Type of Units:** The development features a range of unit types, including one-bedroom, two-bedroom, and spacious three-bedroom apartments. Each unit is meticulously crafted with high-end finishes, modern fittings, and floor-to-ceiling windows that offer panoramic views of Pattaya's skyline and the serene Gulf of Thailand.
- **Interior Features:** Modern aesthetics are evident in every aspect of the interiors, with open-plan layouts that maximize space and light. The kitchens are equipped with top-of-the-line appliances, elegant cabinetry, and sleek countertops, while the bathrooms boast luxurious fixtures and contemporary designs.
- **Safety and Security:** Advanced security systems, including 24-hour surveillance and secure entry points, ensure the safety and privacy of all residents.

Facilities:

- **Leisure and Wellness:** The development boasts a range of facilities designed for relaxation and wellness. This includes a state-of-the-art fitness center, a large swimming pool with a sun deck, and

landscaped gardens that provide a serene environment for relaxation.

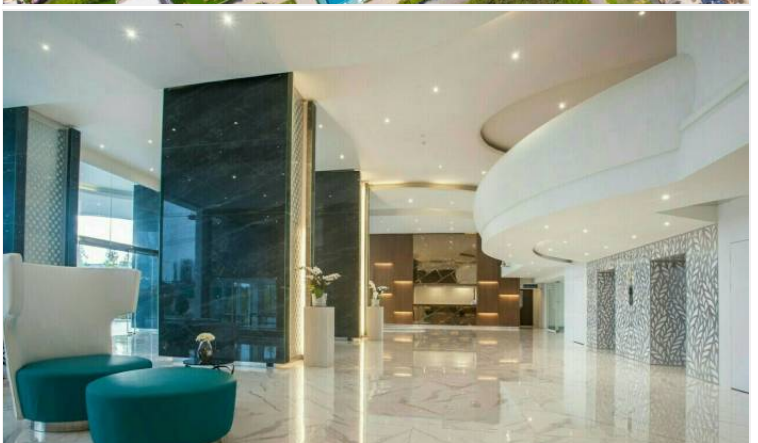
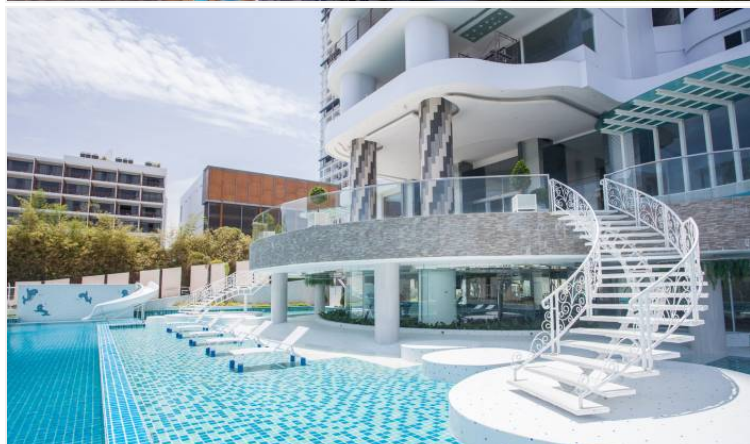
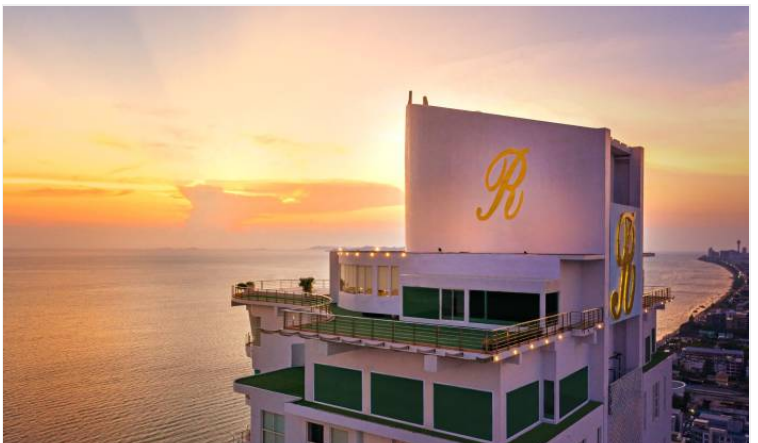
- **Entertainment and Social Spaces:** Residents can enjoy a variety of social and entertainment spaces, such as a residents' lounge, barbecue areas, and a children's play area, fostering a sense of community within the development.
- **Concierge Services:** A full-service concierge is available to assist residents with various needs, from transportation arrangements to local recommendations.

Location and Neighborhood: Residence @ Dream is ideally located in a sought-after area of Na Jomtien, offering easy access to a multitude of amenities:

- **Proximity to Beaches:** The residence is just a short drive from Pattaya's famous beaches, where residents can enjoy sunbathing, water sports, and beachfront dining.
- **Shopping and Dining:** A wide array of shopping centers, markets, fine-dining restaurants, and local eateries are within easy reach, providing residents with diverse culinary and shopping experiences.
- **Connectivity:** The development benefits from excellent connectivity, with major roads and public transportation options nearby, making it convenient for residents to explore Pattaya and its surroundings.

Residence @ Dream in Pattaya represents a perfect blend of luxury, comfort, and convenience, making it an ideal choice for those seeking a high-quality living experience in one of Thailand's most dynamic cities.

Photo Gallery





Property Details

- **Property Type:** Condo
- **Location:** Pattaya, Na Jomtien, Thailand
- **Land Area:** 16000m²
- **Price:** ~~฿~~**4,878,000**
- **Bedrooms:** 1
- **Bathrooms:** 1

Property Features

- Swimming Pool
- Air Conditioning
- Balcony
- Electricity
- Integral Kitchen
- Alarm
- Children's Area
- Guardhouse
- Equipped Kitchen

Location

