

The Panora - 1 Bed 1 Bath Sea View Type A4

Pattaya, Pratamnak, Thailand
Reference: 16896

฿5,223,100



1 Bedrooms



1 Bathrooms



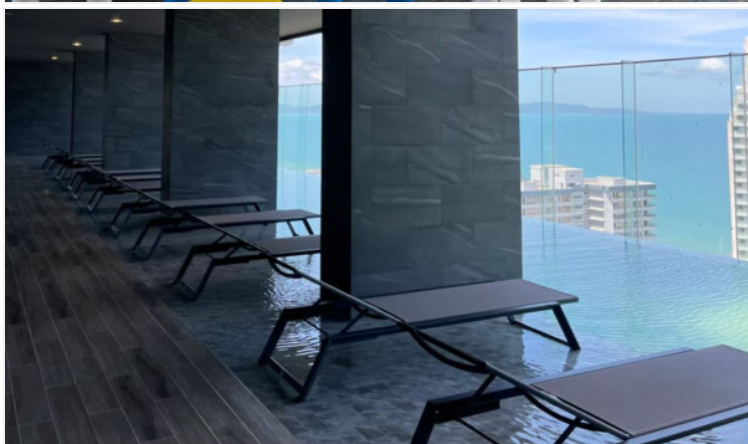
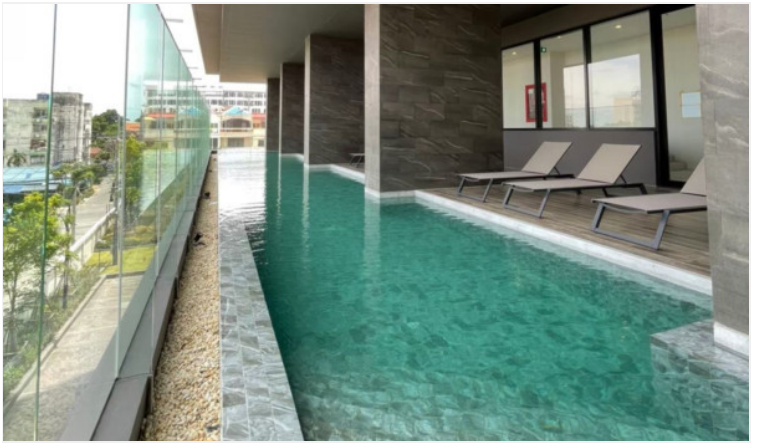
Condo

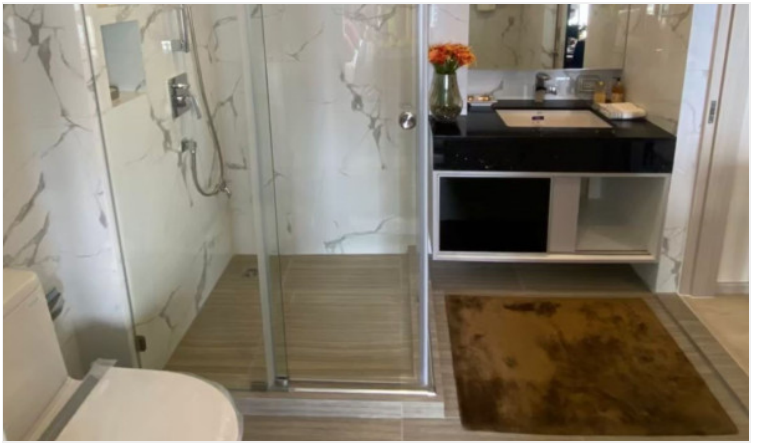
Property Description

Harmonious living on 2 sides between Pattaya city and the sea is the concept of the Panora project. Seaview panoramic vision combined with conceptual design implementing pattern as a key element to achieve luxurious living at its finest. The definition of an impressive prize possession investment. Liv luxuriously by the sea in the heart of Pratamnak Hill. The project consists of 38 floors, and 327 units ranging from studio to two-bedroom types. The complete set of project facilities includes a swimming pool on the 4th floor, an infinity sky pool on the 29th floor, a sky garden, fitness, sauna, kid's room, sunken blue, and sunken green. Its location is only 250 meters from the beach and easily accessible to various places in Pattaya such as Walking Street, Bali Hai Pier, Pattaya View Point, Khao Phra Yai Temple, Central Festival Pattaya, and other places.

Photo Gallery







Property Details

- **Property Type:** Condo
- **Location:** Pattaya, Pratamnak, Thailand
- **Internal Area:** 33.81m²
- **Land Area:** 24160m²
- **Price:** ฿5,223,100
- **Bedrooms:** 1
- **Bathrooms:** 1

Property Features

- Security
- Gym
- Jacuzzi
- Sauna
- Swimming Pool
- Air Conditioning
- Balcony
- Car Park
- Electricity
- Internet
- Alarm
- Children's Area
- Lift
- Office

Location

