

The Cove Pattaya

Pattaya, Nong Prue, Thailand

Reference: 134

฿11,440,000



0 Bedrooms



0 Bathrooms



Villa

Property Description

The Cove Pattaya: A Jewel of Luxury Living on Wong Amat Beach

Location and Neighborhood

The Cove Pattaya, an exceptional luxury condominium, graces the pristine shores of Wong Amat Beach, located on Na-Klue Soi 18/1 in North Pattaya. This iconic property boasts a golden location with a private white beach, offering residents an exclusive escape amidst Pattaya's vibrant lifestyle.

The Cove Pattaya, a project developed by Petch Property Development Co., Ltd., stands as a single, high-rise building comprising 18 floors. This beachfront condominium features a unique rounded triangle architectural design, offering 100 luxurious units with varying layouts from studios to 5-bedroom units. Each unit is designed to maximize the breathtaking sea views, with spacious balconies and large glass doors for an airy, well-ventilated living experience.

Condition and Amenities

Completed in 2011, The Cove is recognized for its exceptional standard of luxury. The common areas include a range of facilities:

A swimming pool overlooking the sea

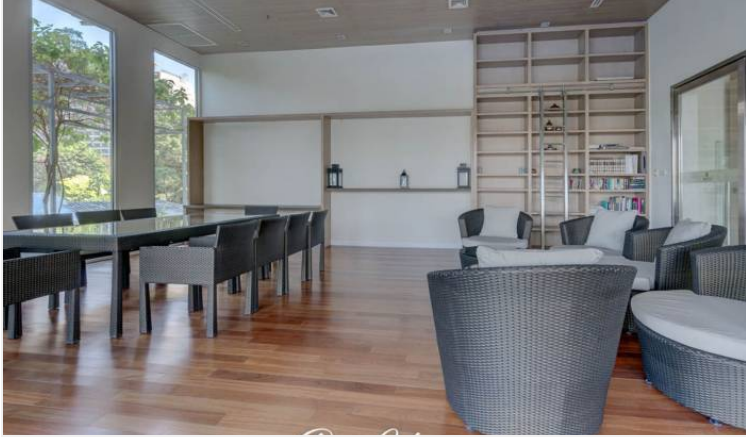
A sauna room

An outdoor activity area

A pathway for direct beachfront access

The Cove reflects the pinnacle of luxury living, with each aspect carefully curated by professional architects to ensure an unparalleled living experience. It is a testament to high-end, beachside living in Pattaya.

Photo Gallery



Property Details

- **Property Type:** Villa
- **Location:** Pattaya, Nong Prue, Thailand
- **Price:** ฿11,440,000
- **Bedrooms:** 0
- **Bathrooms:** 0

Property Features

- Security
- Gym
- Jacuzzi
- Sauna
- Swimming Pool
- Air Conditioning
- Balcony
- Car Park
- Electricity
- Alarm
- Children's Area
- Lift

Location

