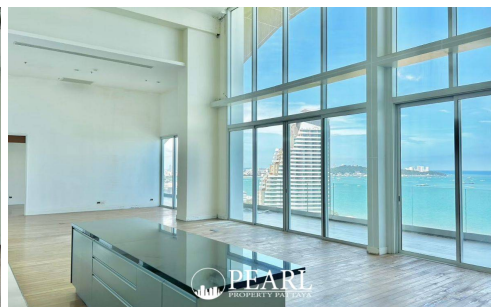


The Cove Four-Bedroom Ocean Pearl Penthouse

Pattaya, Nong Prue, Thailand

Reference: 3517

฿90,472,000



4 Bedrooms

6 Bathrooms

Condo

Property Description

- **Penthouse Duplex:** 4 bedrooms, 6 bathrooms, offering 565.45 sqm of expansive living space in the prestigious **Cove Condominium**.
- **Beachfront location:** Nestled on **Wong Amat Beach**, this home boasts **breathtaking sea views** from the living room and beyond.
- **Prime convenience:** Just **5 minutes** from **Terminal 21** and **10 minutes** to **Central Festival Pattaya**, with a wide selection of restaurants within walking distance.
- **World-class amenities:** The Cove Condominium offers an **infinity-edge swimming pool, squash court, underground parking**, and **lush landscaped gardens**.
- **Elegant design:** Enter through a **grand hotel-style lobby**, relax in the **library room**, or host gatherings in the **private clubhouse**.
- **Entertainment hub:** Includes a **pool table and game room, kids room**, and is secured with **24-hour security**.
- Perfect for those seeking beachfront luxury with the convenience of upscale shopping, dining, and recreational amenities nearby.

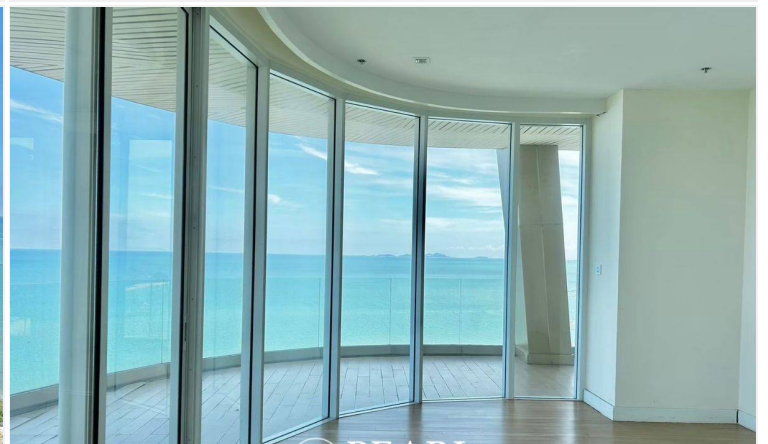
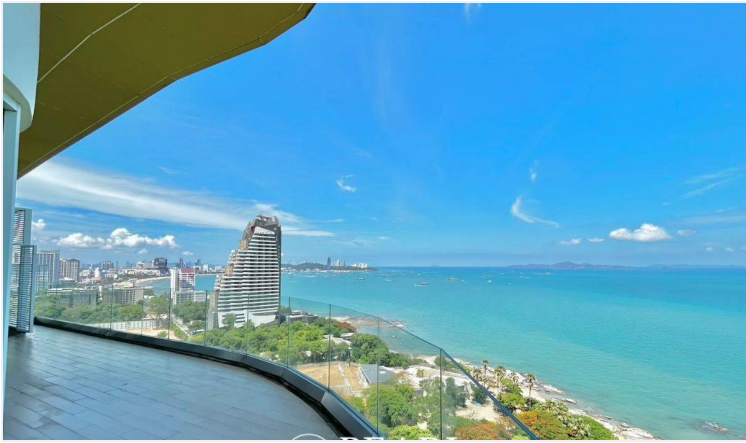
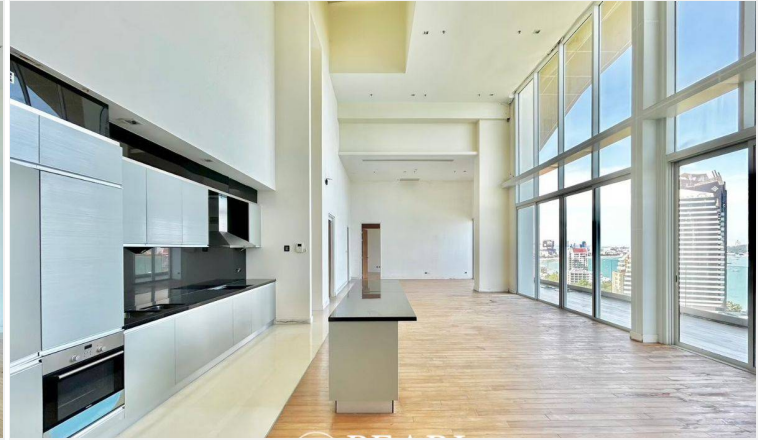
Welcome to the pinnacle of luxury living at the **Cove Condominium**, where this stunning 4-bedroom, 6-bathroom penthouse duplex offers 565.45 sqm of high-end beachfront living. Located on the pristine **Wong Amat Beach**, this residence provides unparalleled **sea views** from the spacious living room and throughout. Just **5 minutes** from **Terminal 21** and **10 minutes** to **Central Festival Pattaya**, this penthouse combines serene coastal tranquility with the convenience of nearby world-class shopping, dining, and entertainment. You'll also find a variety of charming restaurants within walking distance.

Residents of The Cove enjoy access to a range of resort-style amenities, including an **infinity-edge swimming pool, squash court, underground parking**, and **lush landscaped gardens**. Enter through a **grand hotel-style lobby**, unwind in the **library room**, or entertain guests in the **private clubhouse**. Additional features include a **pool table and game room**, a dedicated **kids room**, and **24-hour**

security for your peace of mind. This property is the perfect choice for those seeking an extraordinary tropical lifestyle in an exclusive and convenient location.

Photo Gallery







Property Details

- **Property Type:** Condo
- **Location:** Pattaya, Nong Prue, Thailand
- **Internal Area:** 565.45m²
- **Price:** **฿90,472,000**
- **Bedrooms:** 4
- **Bathrooms:** 6

Property Features

- Security
- Gym
- Jacuzzi
- Swimming Pool
- Air Conditioning
- Balcony
- Car Park
- Electricity
- Integral Kitchen
- Internet
- Alarm
- Children's Area
- Concierge
- Guardhouse
- Lift
- Office
- Equipped Kitchen
- Terrace
- Disabled Access
- Library

Location

