

Sombat Condo View - 4Bed 5Bath

Pattaya City, Pattaya, Thailand
Reference: 4323

฿33,000,000



4 Bedrooms



5 Bathrooms



Condo

Property Description

Pearl Property presents a rare opportunity to own a breathtaking penthouse at Sombat Condo View in Pratumnak - where luxury, space, and sea views converge.

Spanning an impressive **481.55 sqm of fully furnished interior space**, this grand penthouse offers **4 spacious bedrooms and 5 stylish bathrooms**, making it ideal for families or those who love to entertain in style.

The **open-plan living area** seamlessly connects to a massive **283.45 sqm private balcony**, creating an extraordinary indoor-outdoor lifestyle with sweeping views of the sea and skyline. Whether hosting gatherings or simply enjoying quiet evenings, this residence offers a level of comfort and elegance rarely found in the Pattaya market.

The **European kitchen** comes fully equipped with premium appliances, perfect for home chefs and entertainers alike. Every detail is crafted for modern luxury living, from the high-quality finishes to the thoughtful layout.

Building Features:

- 24-hour security and key card access

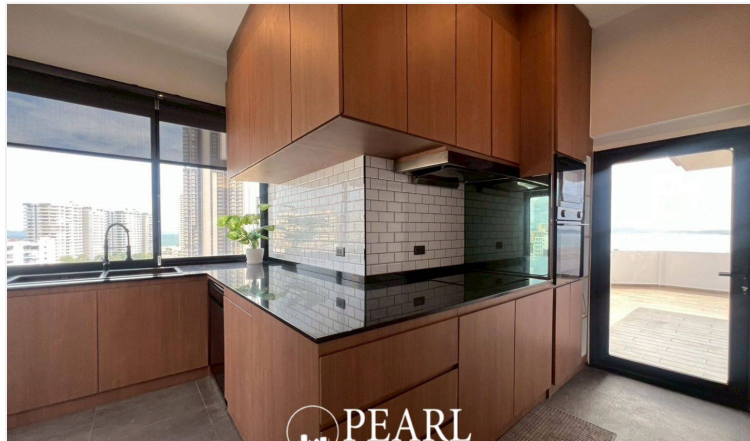
- Elevator access to the penthouse level
- Private parking
- Peaceful garden surroundings and well-kept communal areas

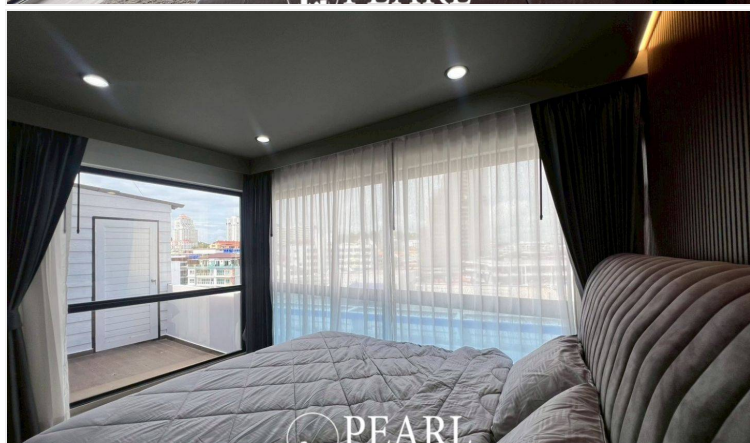
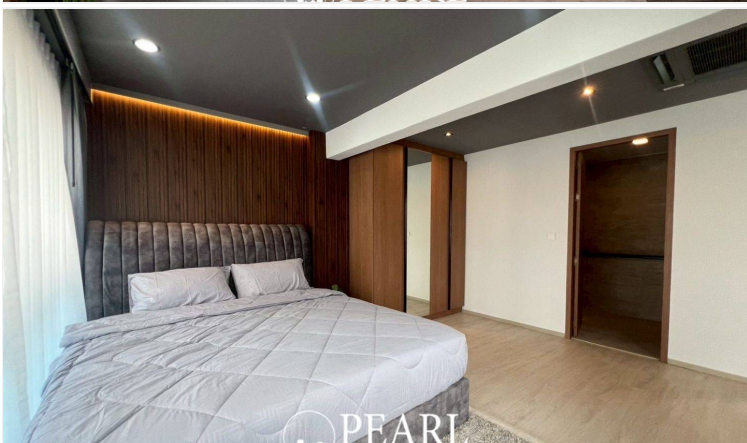
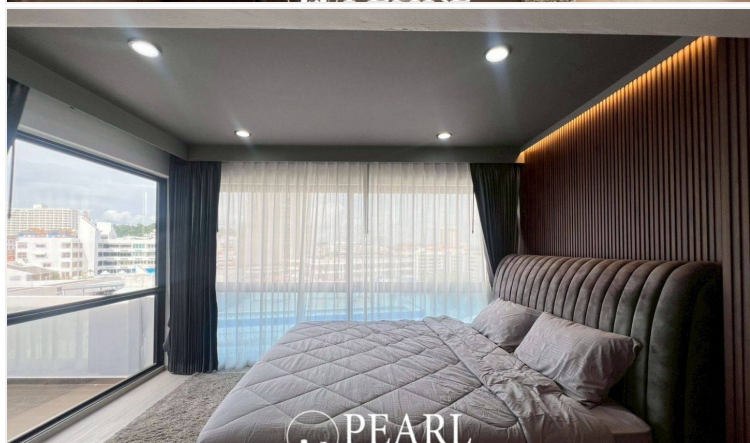
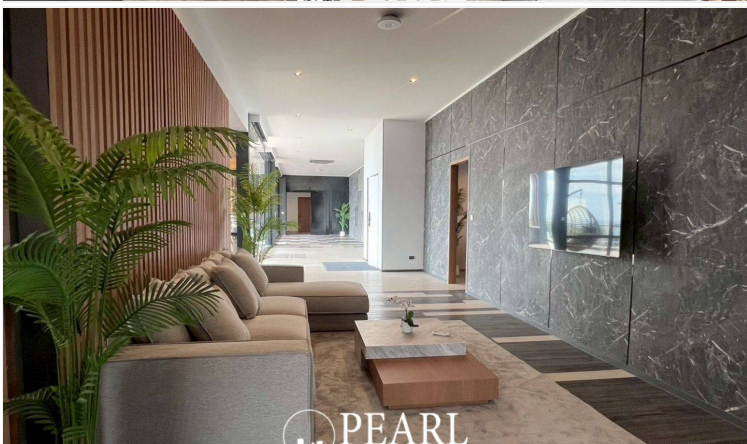
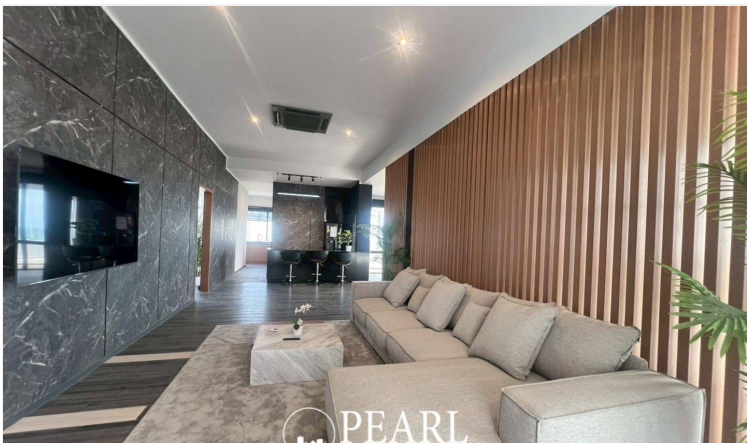
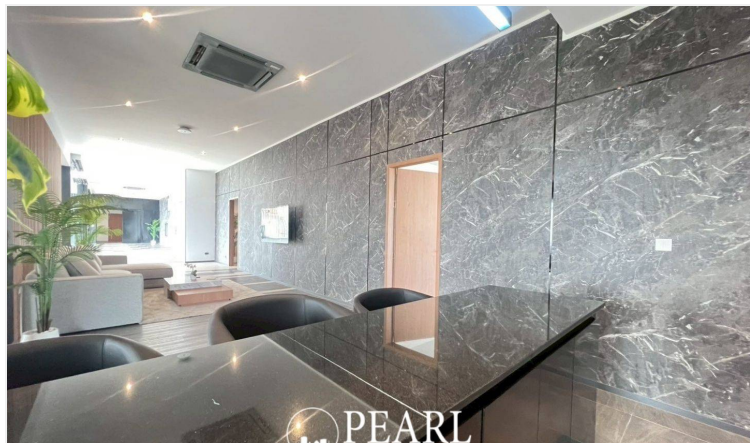
Located in the sought-after **Pratumnak neighborhood**, this penthouse places you within easy reach of **local cafés, parks, beaches, and lifestyle amenities**, while maintaining a sense of seclusion and calm. Just minutes from Pattaya's city center, this location is perfect for those seeking convenience with privacy.

This is more than just a condo – it's a rare sanctuary above the city with panoramic sea views and a prestigious address.

Contact us today to schedule a private viewing of this exceptional penthouse.

Photo Gallery







Property Details

- **Property Type:** Condo
- **Location:** Pattaya City, Pattaya, Thailand
- **Internal Area:** 481.55m²
- **Price:** ฿33,000,000
- **Bedrooms:** 4
- **Bathrooms:** 5

Location

