

Seven Seas Le Carnival - 1 Bed 1 Bath

City View Type A1

Pattaya, Jomtien, Thailand
Reference: 13875

฿4,213,196



1 Bedrooms



1 Bathrooms

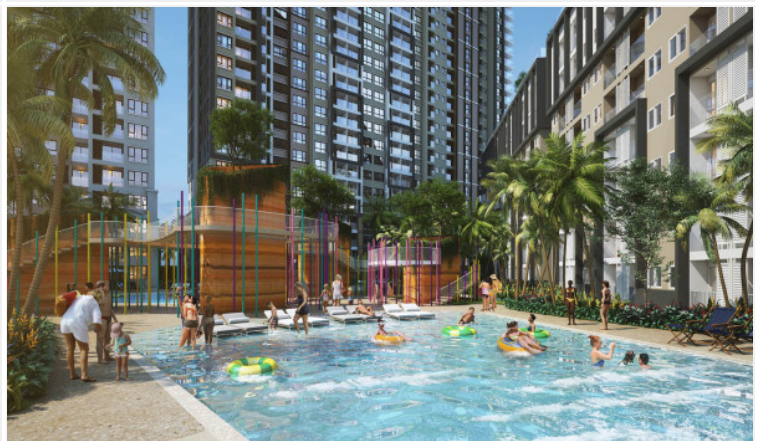


Condo

Property Description

Seven Seas Le Carnival is the only project in Pattaya that combines resort-style living with high-end luxury. It is an upcoming project from Universal Group Thailand consisting of 2 high-rise and 2 low-rise buildings. With its key features of fully furnished units, sky view lounge & garden areas, infinity swimming pool, lagoons, wave pool, landscaped outdoor areas, 2 gymnasiums, sauna, jacuzzi, highrise double ceiling glass panoramic view restaurant, lounge & bars, event halls, games rooms, library, kid's areas, and panoramic views. Seven Seas le Carnival is located on a spacious 12 rai plot on Soi Wat Boonkanjanaram approximately 1 km from Jomtien beach with easy access to Sukhumvit highway.

Photo Gallery







Property Details

- **Property Type:** Condo
- **Location:** Pattaya, Jomtien, Thailand
- **Internal Area:** 37m²
- **Land Area:** 16500m²
- **Price:** ~~฿4,213,196~~
- **Bedrooms:** 1
- **Bathrooms:** 1

Property Features

- Security
- Gym
- Jacuzzi
- Sauna
- Swimming Pool
- Air Conditioning
- Balcony
- Car Park
- Electricity
- Integral Kitchen
- Alarm
- Children's Area
- Concierge
- Guardhouse
- Lift
- Office
- Roof Garden

Location

