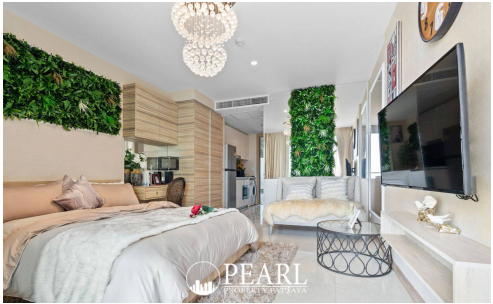


Riviera Jomtien - 1Bed 1 Bath Sea View (11th Floor)

Pattaya, Jomtien, Thailand
Reference: 1119

฿4,406,400



1 Bedrooms

1 Bathrooms

Condo

Property Description

The New Landmark of Jomtien

A luxurious high-rise condominium designed to stand out on the skyline, offering breathtaking panoramic views of Jomtien Beach. Conveniently located on Jomtien Second Road, near Sukhumvit Road, providing easy access to all major destinations. Over **80% of the units** feature direct sea views.

World-Class Facilities

The Riviera Jomtien offers an exceptional living experience with premium facilities, including a **large swimming pool, jacuzzi, clubhouse, meeting room, games room, sauna, fitness center, and kid’s club**. The highlight features include **Sky Fitness and an infinity-edge pool on the 42nd floor**.

Unit Details

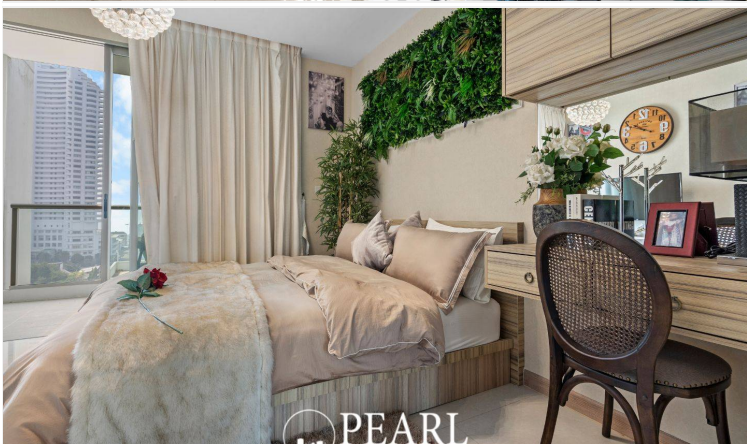
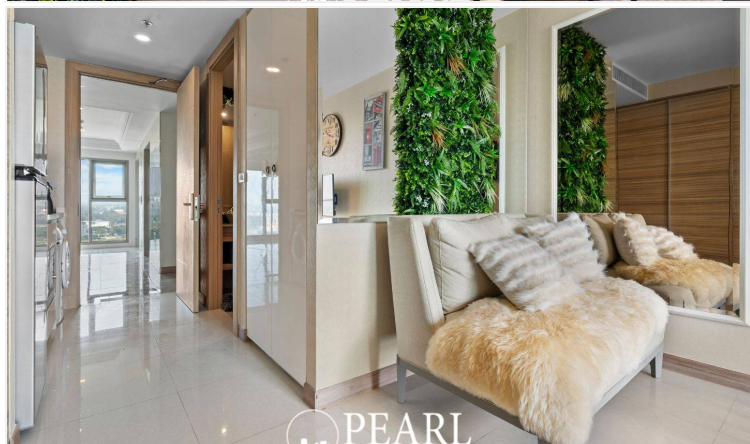
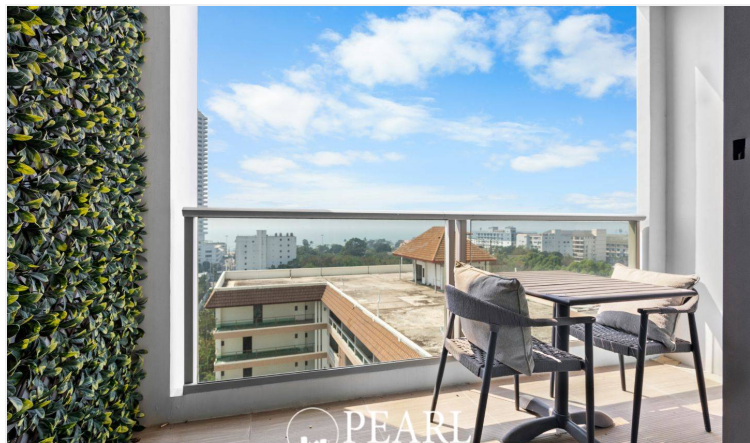
- 1 Bedrooms, 1 Bathrooms
- 32.64 sq.m. Studio of living space
- 11th floor with a sea view
- Fully furnished
- European-style kitchen, dining area, and living space

Sales Conditions

Available under **Foreign Quota ownership**

Photo Gallery





Property Details

- **Property Type:** Condo
- **Location:** Pattaya, Jomtien, Thailand
- **Internal Area:** 32.64m²
- **Land Area:** 33m²
- **Price:** ฿4,406,400
- **Bedrooms:** 1
- **Bathrooms:** 1

Property Features

- Security
- Gym
- Jacuzzi
- Sauna
- Swimming Pool
- Air Conditioning
- Balcony
- Car Park
- Electricity
- Integral Kitchen
- Internet
- Alarm
- Children's Area
- Concierge
- Guardhouse
- Lift
- Roof Garden
- Equipped Kitchen
- Terrace
- Disabled Access

Location

