

Reflection - 2 Bed 2 Bath With Sea View (10th Floor)

Pattaya, Jomtien, Thailand
Reference: 2400

฿14,950,000



2 Bedrooms



2 Bathrooms



Condo

Property Description

Pearl Property presents – A Luxury 2-Bedroom Duplex Condo at Reflection, a 5-Star Beachfront Development in Jomtien

Experience high-end living in this exceptional 2-bedroom duplex condo at Reflection Jomtien Beach Pattaya – one of the most prestigious and sought-after beachfront residences in Pattaya. This iconic development is renowned for its striking architecture, luxurious design, and world-class amenities.

Property Highlights:

Spacious 136 sqm of meticulously designed living space

Positioned on the 10th and 11th floors – offering uninterrupted sea views

Private jacuzzi on the balcony – your personal retreat in the sky

Modern interior with premium-grade materials and finishes

Full access to the development’s 5-star amenities

Whether you're seeking a luxury holiday home, a stylish permanent residence, or a high-return investment opportunity, this condo delivers on every front.

World-Class Facilities at Reflection Jomtien Beach Pattaya:

Expansive beachfront swimming pool with jacuzzi and separate children’s pool

Pearl Property Pattaya

Fully equipped fitness center

Sauna and steam rooms

Children's playground and landscaped garden areas

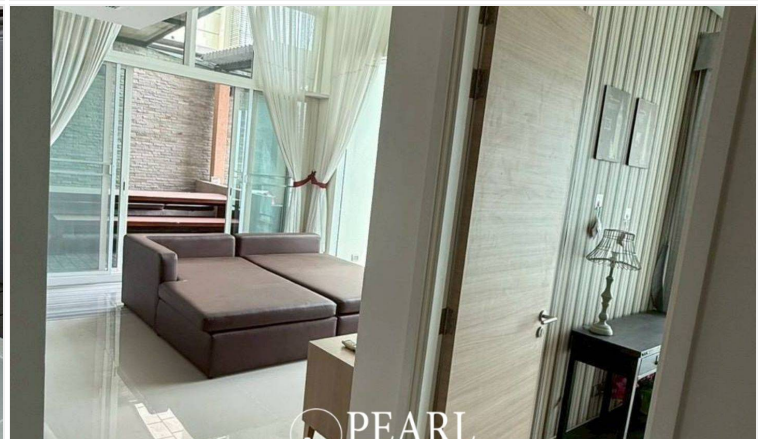
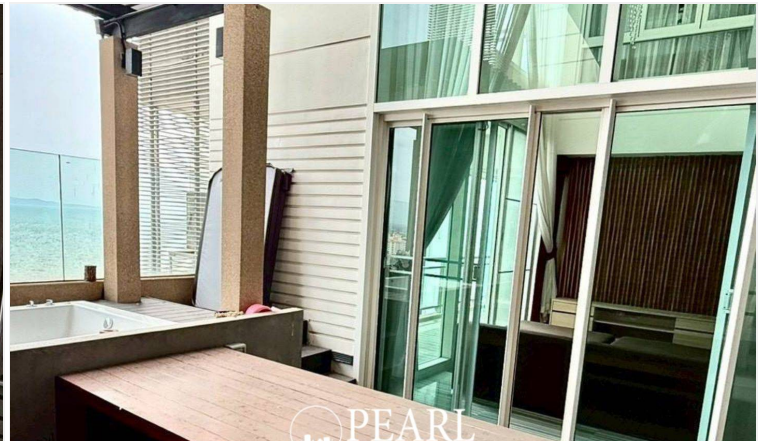
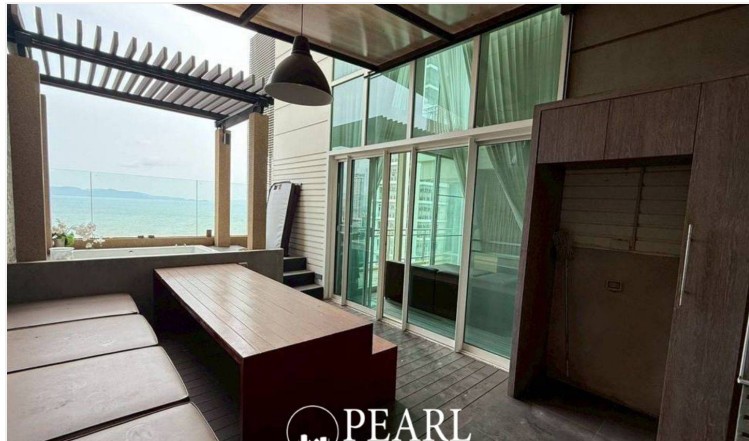
Resident lounge and meeting room

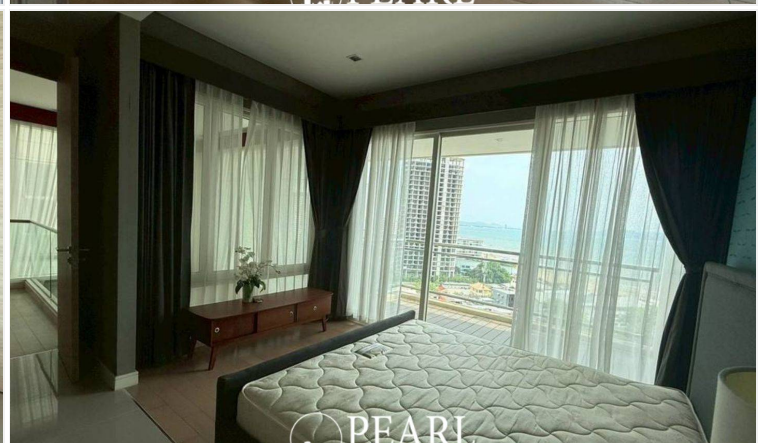
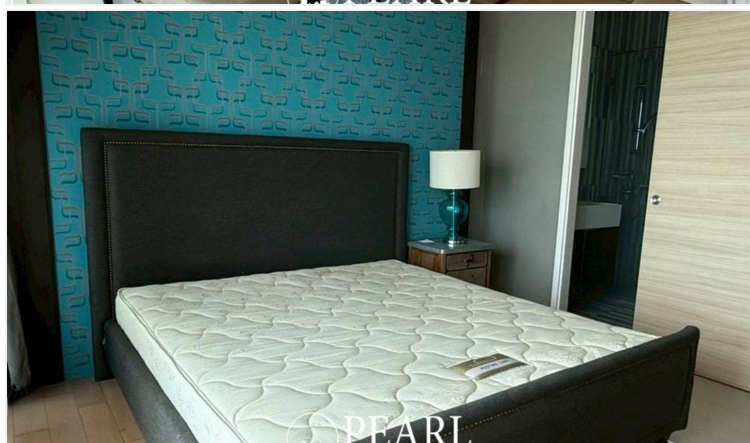
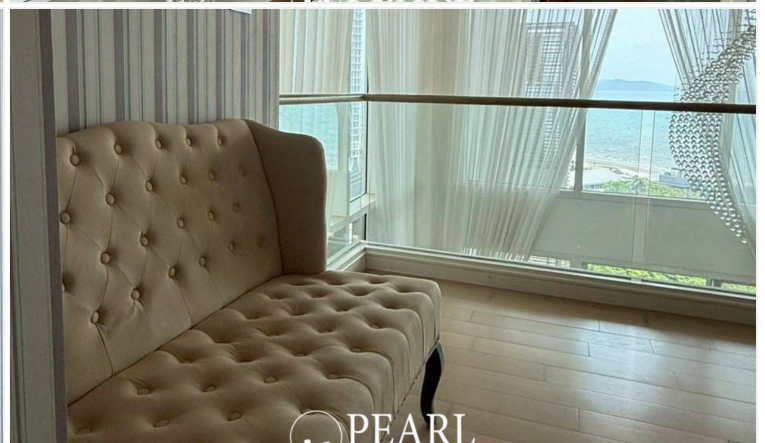
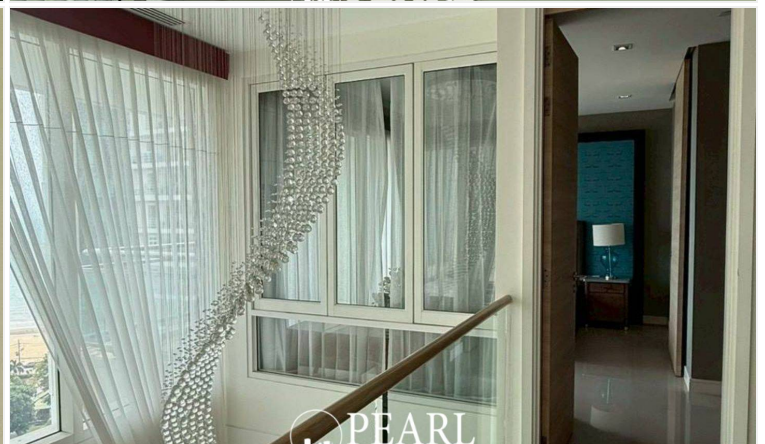
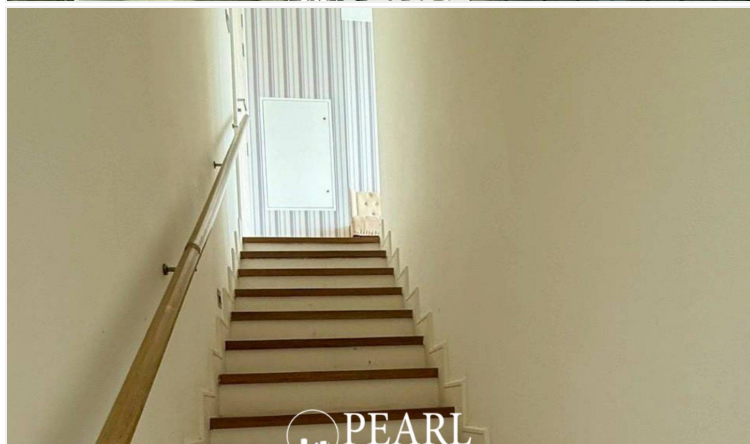
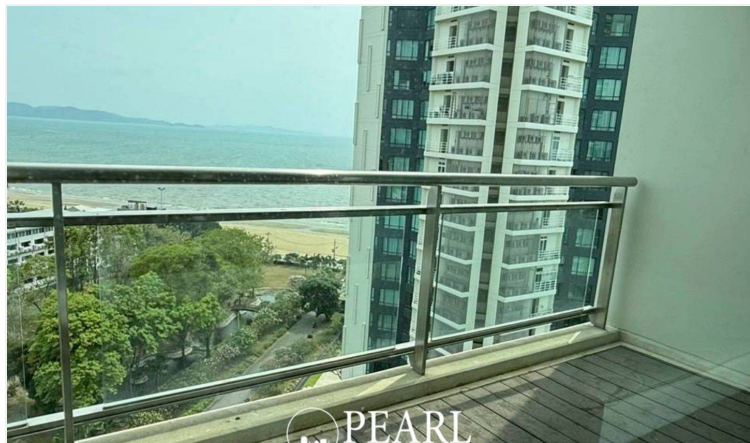
Secure indoor parking and 24-hour security

Keycard access and CCTV throughout the property

Elegant lobby with professional concierge service

Photo Gallery







Property Details

- **Property Type:** Condo
- **Location:** Pattaya, Jomtien, Thailand
- **Internal Area:** 136m²
- **Price:** ฿14,950,000
- **Bedrooms:** 2
- **Bathrooms:** 2

Property Features

- Security
- Gym
- Jacuzzi
- Sauna
- Swimming Pool
- Tennis Court
- Air Conditioning
- Balcony
- Car Park
- Electricity
- Integral Kitchen
- Internet
- Alarm
- Children's Area
- Concierge
- Guardhouse
- Lift
- Office
- Equipped Kitchen
- Disabled Access
- Library

Location

