

# Pool Villa Near Mabprachan Lake - 4 Bed 5 Bath With Private Swimming Pool

Pattaya, Mabprachan Lake, Thailand

Reference: 4510

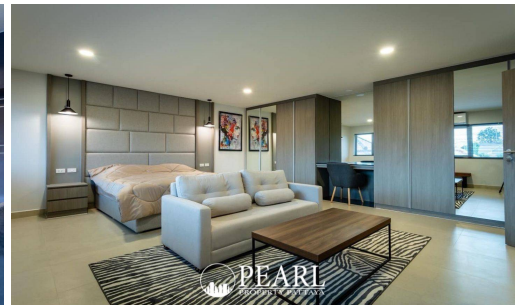
## ฿13,650,000



4 Bedrooms



5 Bathrooms



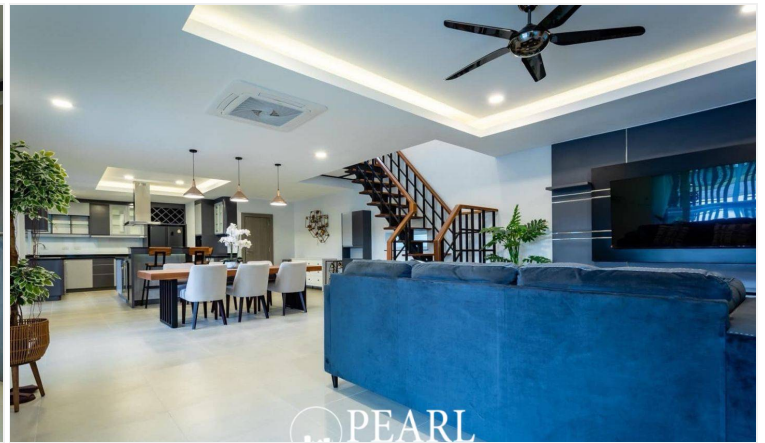
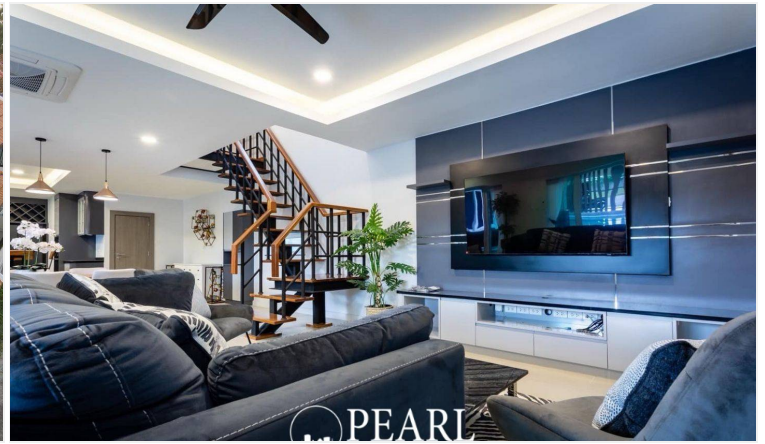
Villa



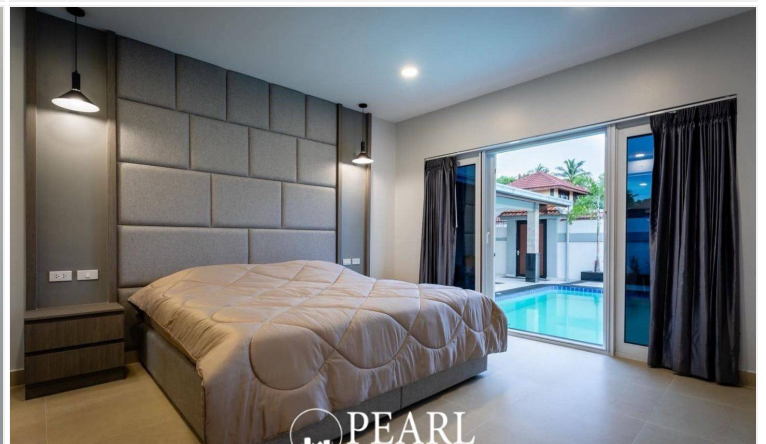
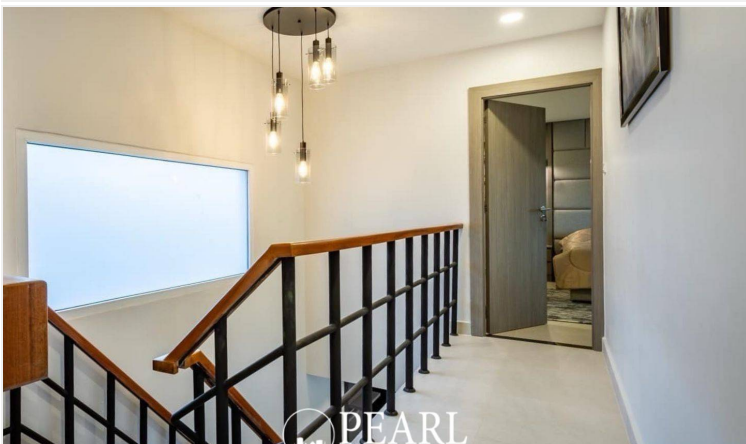
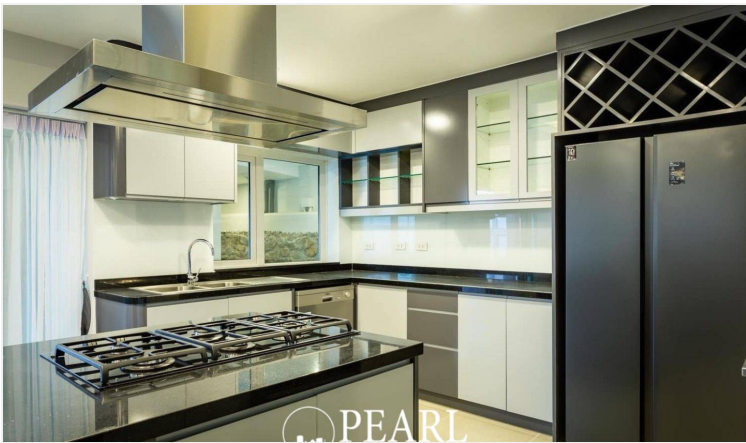
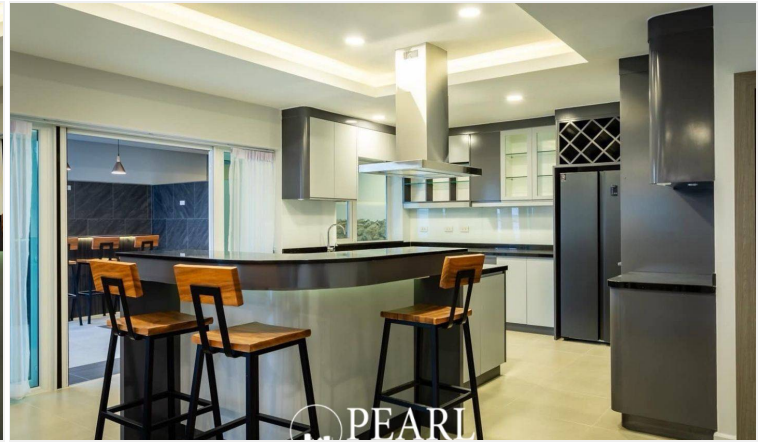
# Property Description

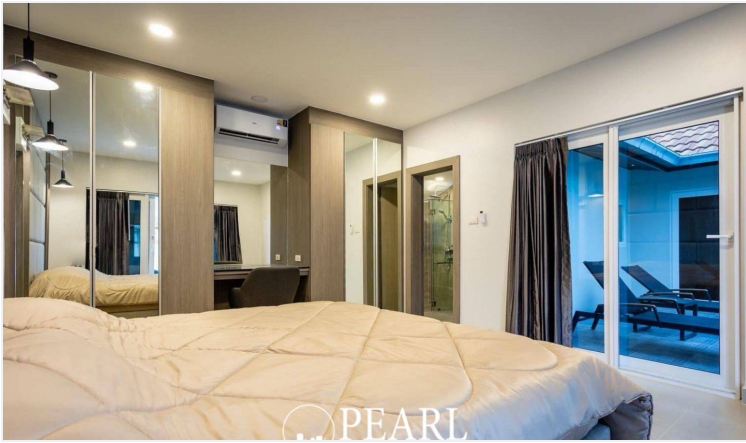
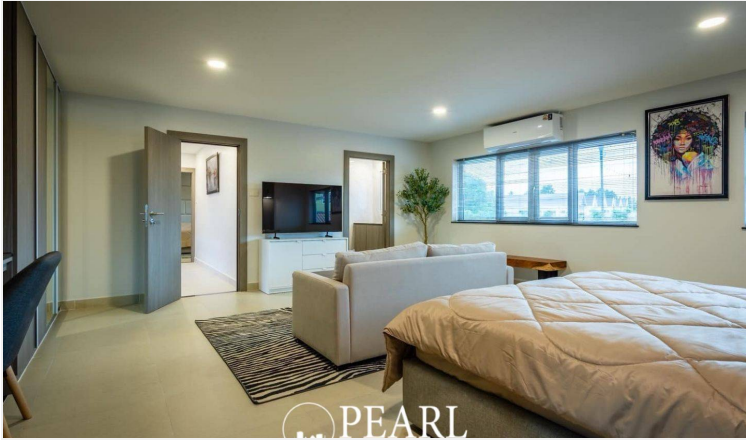
This villa is situated in the sought-after area of East Pattaya, just a short distance from Mabprachan Lake, Siam Country Golf Club, international schools, shopping malls, and a variety of dining options. Its location offers convenient access to Highway 36, connecting you to Rayong and Pattaya, as well as Motorway 7, which leads to Bangkok and Suvarnabhumi Airport. The villa boasts 4 bedrooms and 5 bathrooms, providing 250 sqm of living space on a 474 sqm plot of land. It comes fully furnished and includes a private swimming pool and parking space, offering both comfort and privacy in a prime location.

# Photo Gallery











# Property Details

- **Property Type:** Villa
- **Location:** Pattaya, Mabprachan Lake, Thailand
- **Internal Area:** 250m<sup>2</sup>
- **Land Area:** 474m<sup>2</sup>
- **Price:** ฿13,650,000
- **Bedrooms:** 4
- **Bathrooms:** 5

# Location

