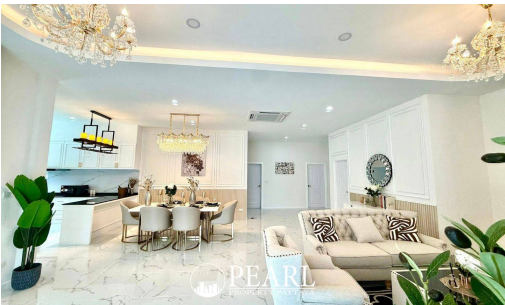


Pattaya Park Hill Village

Pattaya City, Pattaya, Thailand
Reference: 5150

฿10,900,000



3 Bedrooms

4 Bathrooms

Villa

Property Description

Pearl Property presents a spacious corner pool villa in Pattaya Park Hill Village - luxury living in Nong Yai 1 at an unbeatable price!

Set on a generous **144 sq. wah (576 sq.m.) plot**, this beautifully maintained **3-bedroom, 4-bathroom** home (plus **maid's room**) offers privacy, comfort, and a prime location. Each bedroom comes with its own en-suite bathroom, making it ideal for families or those who love to entertain.

Property Highlights:

- Corner unit with a large, shaded yard
- **Saltwater swimming pool** (4 x 7 meters) with a spacious poolside lounge area
- **Fully air-conditioned**, with units in every room
- High-quality **built-in furniture** throughout
- Comes with appliances including **TVs, refrigerators, and electric stove**

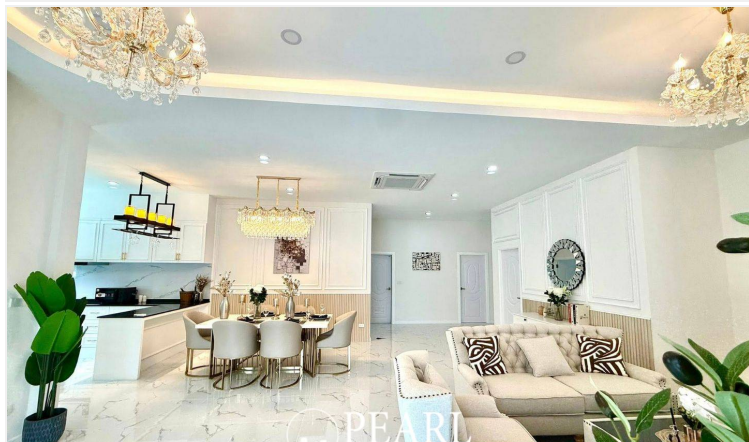
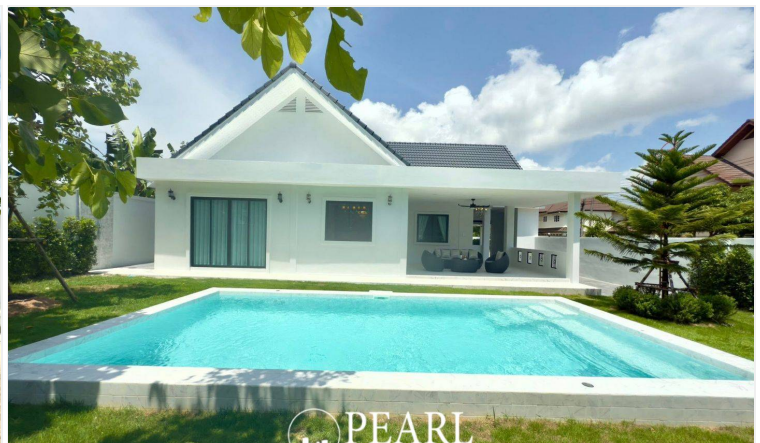
- Bright, open-plan living space perfect for both everyday living and hosting guests

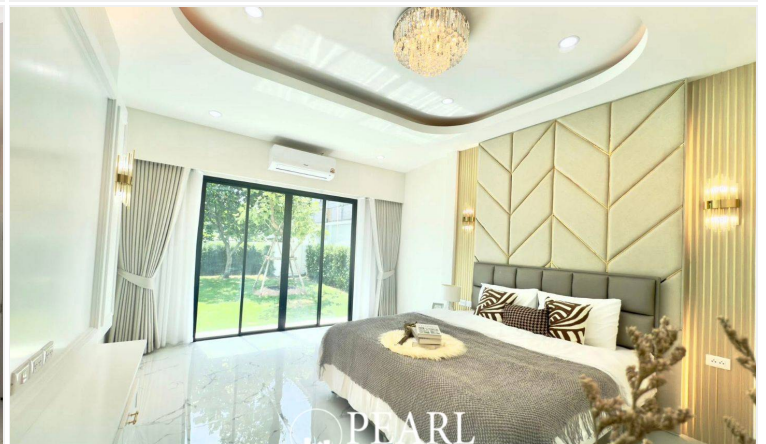
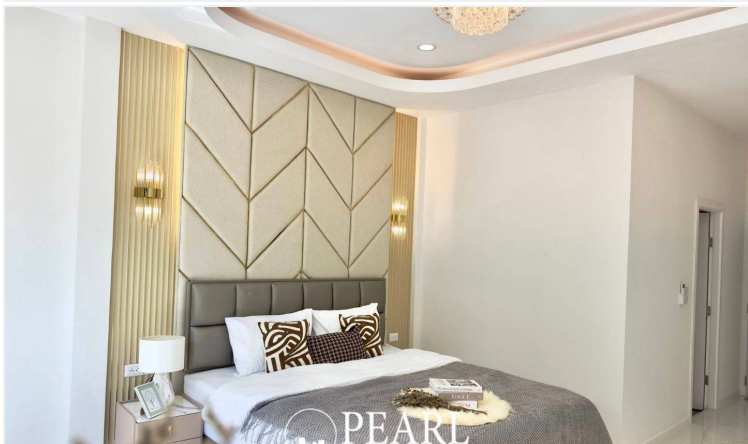
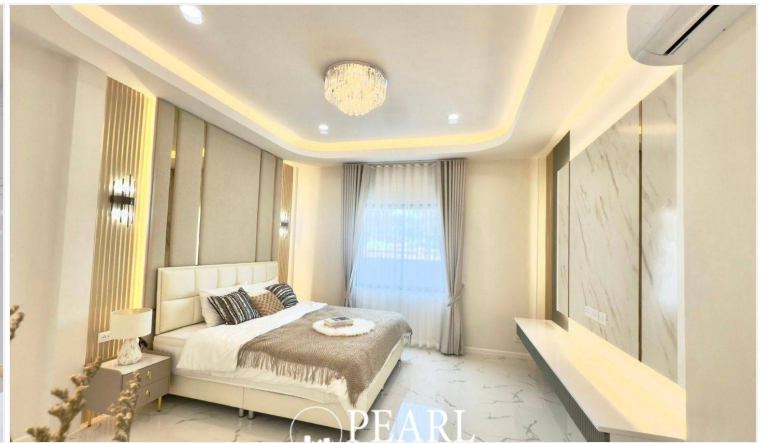
Located in **Pattaya Park Hill Village, Nong Yai 1**, the home offers easy access to main roads, markets, and essential city amenities—while still enjoying a peaceful, residential vibe.

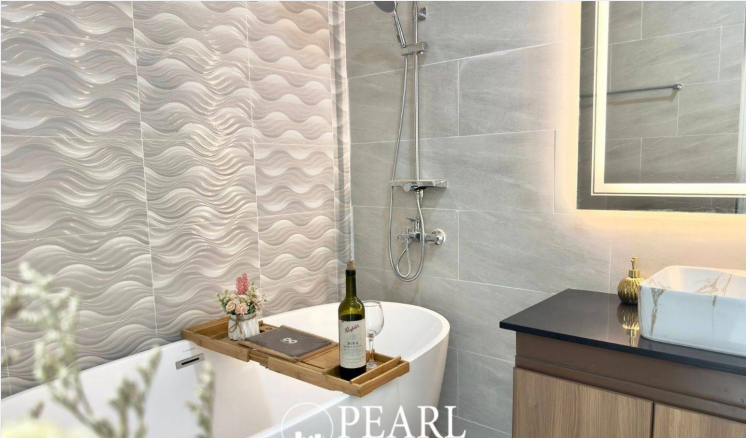
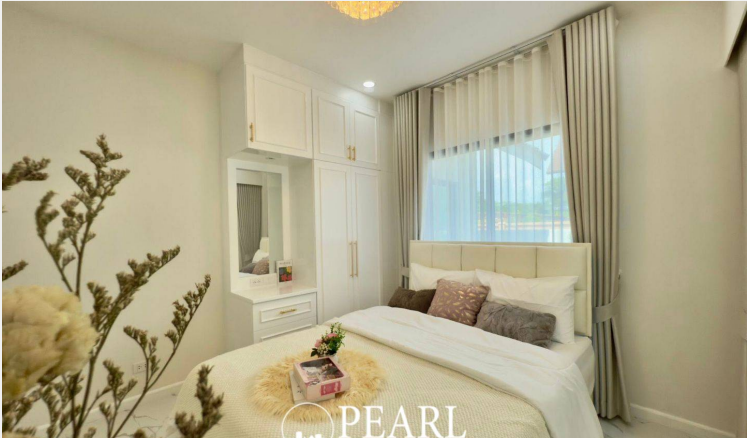
Only 10.9 million THB - excellent value for this size and quality!

Contact us today to arrange a private viewing or get more details.

Photo Gallery







Property Details

- **Property Type:** Villa
- **Location:** Pattaya City, Pattaya, Thailand
- **Internal Area:** 250m²
- **Land Area:** 576m²
- **Price:** ฿10,900,000
- **Bedrooms:** 3
- **Bathrooms:** 4

Location

