

# Once Wongamat

Pattaya, North Pattaya, Thailand  
Reference: 5898

## ฿6,175,000



1 Bedrooms



0 Bathrooms



Condo

# Property Description

---

## Once Wongamat: Where Elegance Meets the Sea

Welcome to Once Wongamat, an exclusive beachfront condominium that defines luxury living. Set in the tranquil yet vibrant area of North Pattaya, this stunning 56-storey development offers sophisticated residences with panoramic sea views, world-class amenities, and unmatched convenience.

### Prime Location

Ideally situated along Naklua Road and just a stone's throw away from Naklua Soi 33, Once Wongamat provides easy access to the best of Pattaya while offering a serene escape from the hustle and bustle. Whether you're looking to relax on the pristine beaches or explore local dining, shopping, and entertainment, this sought-after location is the ideal balance of peace and accessibility.

### Building Facts

Land Area: 4-rai (6,400 sq.m.)

Building: 56-storey tower with 548 luxury units

#### Unit Types:

1 Bedroom: 34.30 - 56.09 sq.m.

2 Bedroom: 73.94 - 89.74 sq.m.

3 Bedroom: 123.45 - 171.67 sq.m.

Penthouse: 358 - 448 sq.m.

Parking: 233 car parking lots, 62 motorcycle lots (40%)

(Parallel parking excluded)

### Exclusive Amenities

Every aspect of Once Wongamat has been designed with your comfort and lifestyle in mind, offering a range of luxurious facilities including:

Private lounge and kitchen

Fully-equipped fitness center & studio

Two stunning swimming pools

Kids' play space

Onsen, spa, steam room, and sauna

Panoramic sky deck with breathtaking views

Dressing rooms for added convenience

Night theater for entertainment under the stars

### Exceptional Dining and Leisure

Indulge in a variety of world-class dining options that elevate your living experience:

1st Floor: Cozy café

2nd Floor: All-day dining and fine dining options

36th-37th Floors: Pool bar with panoramic views

50th-51st Floors: Ocean Sky Café for a truly elevated dining experience

56th Floor: Voyage Bar for sunset cocktails and chic evenings

Additional Details

Sinking Fund: 700 baht/sq.m. (one-time payment)

Maintenance Fee: 80 baht/sq.m./month (payable annually)

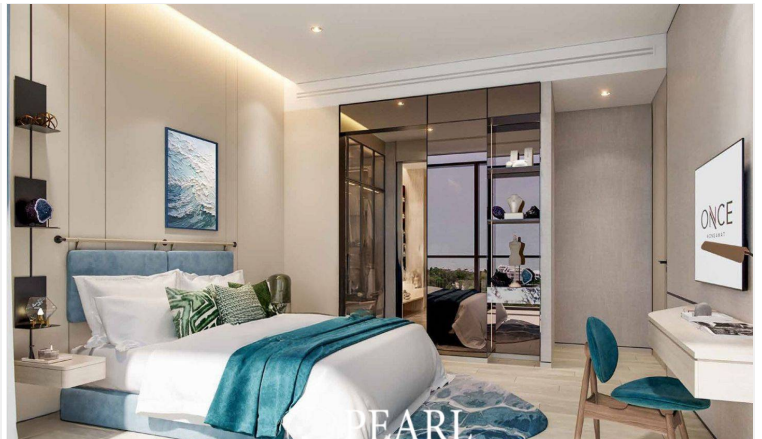
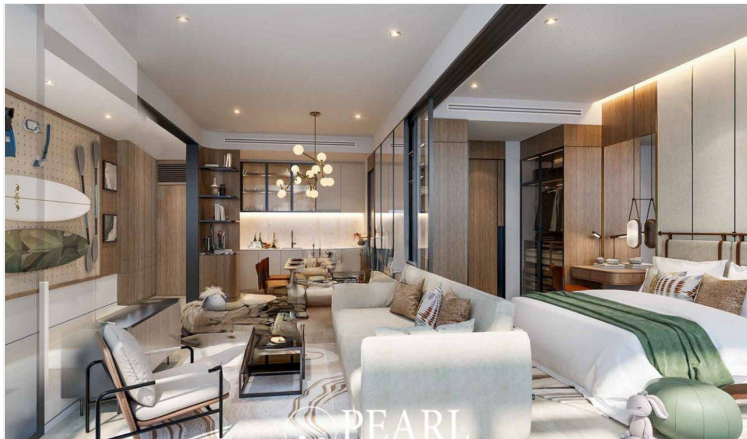
Unrivalled Views & Privacy

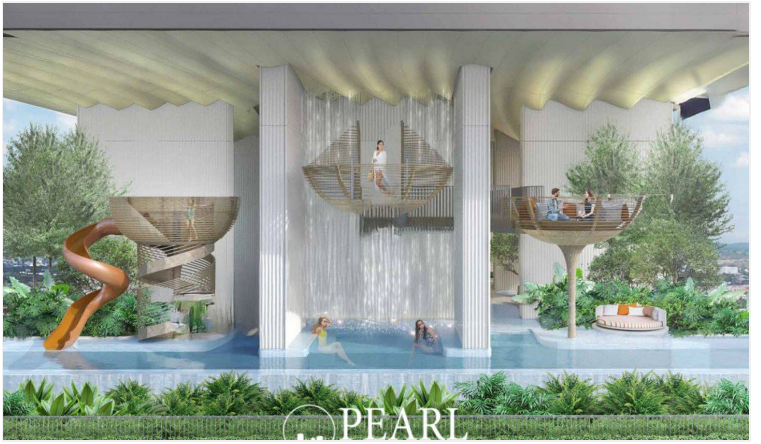
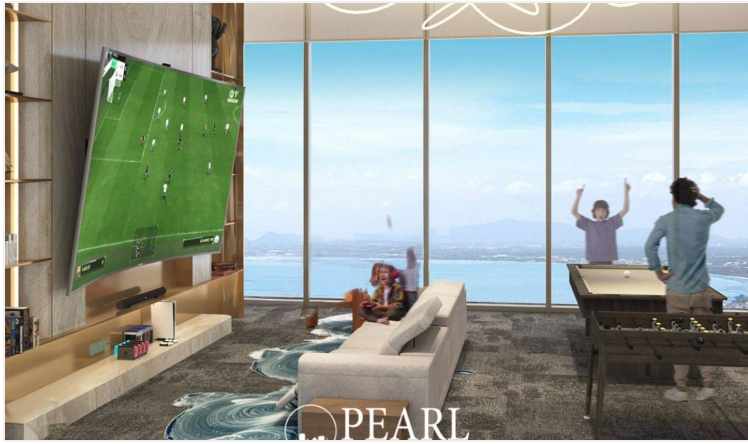
The design of Once Wongamat maximizes the stunning coastal views with floor-to-ceiling windows, while the spacious terraces allow you to enjoy the beauty of the Gulf of Thailand. With just 548 residences, you'll enjoy a serene and exclusive living environment, enhanced by 24/7 security and concierge services.

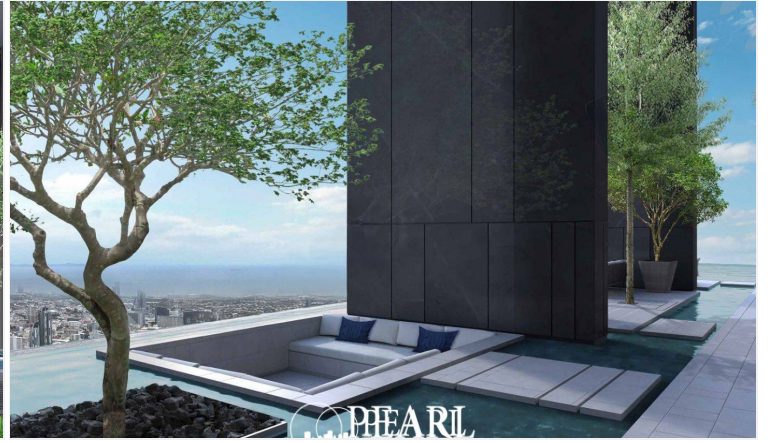
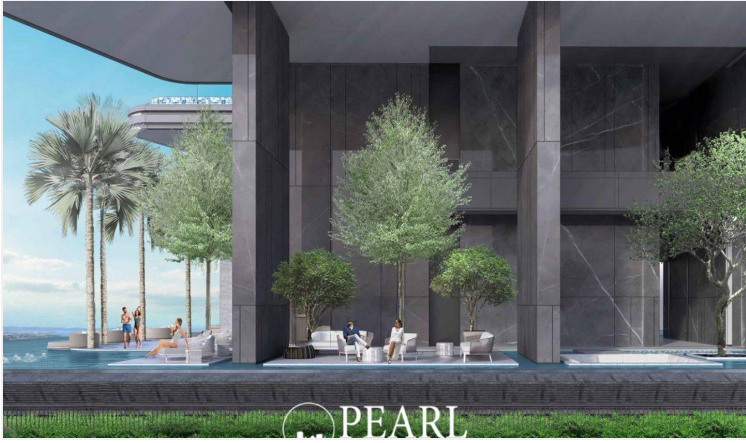
Discover Once Wongamat

More than just a home, Once Wongamat is a lifestyle. Whether you're seeking a full-time residence, a weekend retreat, or a prestigious investment, this luxurious beachfront condominium offers it all. Explore what it means to live in the height of comfort and style.

## Photo Gallery







# Property Details

- **Property Type:** Condo
- **Location:** Pattaya, North Pattaya, Thailand
- **Internal Area:** 34.30m<sup>2</sup>
- **Land Area:** 34m<sup>2</sup>
- **Price:** ฿6,175,000
- **Bedrooms:** 1
- **Bathrooms:** 0

# Location

