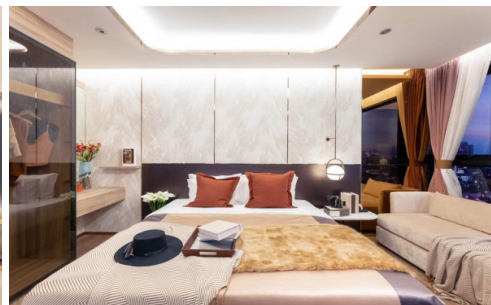
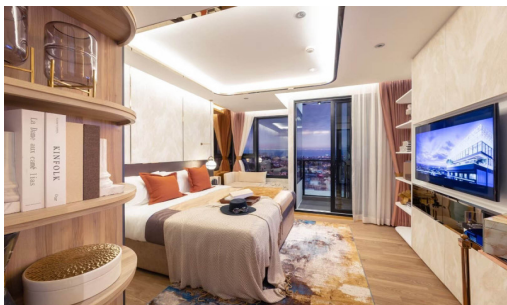


Once Pattaya - Studio City View

Pattaya, North Pattaya, Thailand

Reference: 5580

฿38,550,000



1 Bedrooms

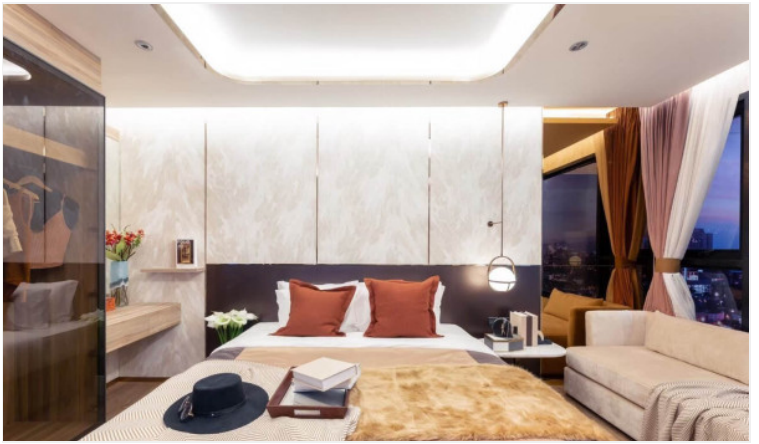
1 Bathrooms

Condo

Property Description

Once Pattaya is a mixed-use condominium project developed by Honour Group. It is a high-rise condominium that contains 427 units across 32 floors. The condominium is situated on 3rd road, North Pattaya, among numerous landmarks, beaches, and department stores such as Mini Siam Pattaya, Teddy Bear Museum, Walking Street, Bali Hai Pier, Phra Tm Nak Hill, Terminal 21, Central Marina, Central Festival Pattaya, Pattaya Beach, Wong Amat Beach. Facilities include sky bar, working space, serene and roof garden, sky gym, infinity-edge pool, kids playroom.

Photo Gallery





Property Details

- **Property Type:** Condo
- **Location:** Pattaya, North Pattaya, Thailand
- **Internal Area:** 28m²
- **Land Area:** 7200m²
- **Price:** **฿38,550,000**
- **Bedrooms:** 1
- **Bathrooms:** 1

Property Features

- Security
- Gym
- Swimming Pool

Location

