

Once Pattaya For Rent - 1 Bed 1 Bath (24th Floor)

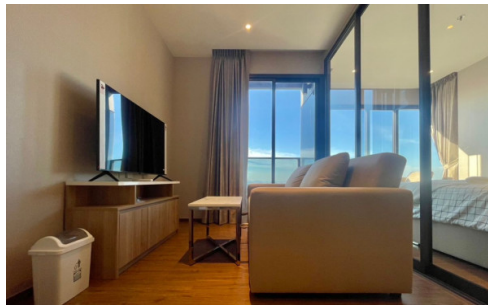
Pattaya, North Pattaya, Thailand

Reference: 22366

฿30,000 per month



1 Bedrooms



1 Bathrooms



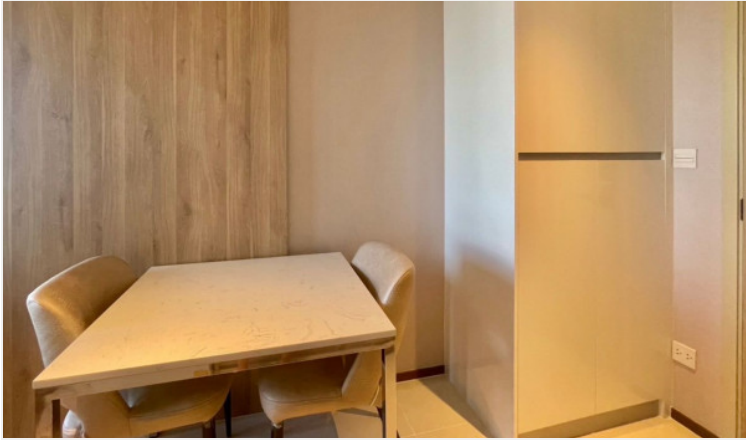
Condo

Property Description

Once Pattaya is situated on 3rd road, North Pattaya, among numerous landmarks, beaches, and department stores such as Mini Siam Pattaya, Teddy Bear Museum, Walking Street, Bali Hai Pier, Phra Tm Nak Hill, Terminal 21, Central Marina, Central Festival Pattaya, Pattaya Beach, Wong Amat Beach. Facilities include sky bar, working space, serene and roof garden, sky gym, infinity-edge pool, kids playroom. This 1 bedroom 1 bathroom unit is situated on the 24th floor offering 34 Sqm. of living space. It comes fully furnished with European kitchen, a dining area, and living area. This unit is for rent and ready to move in.

Photo Gallery





Property Details

- **Property Type:** Condo
- **Location:** Pattaya, North Pattaya, Thailand
- **Internal Area:** 34m²
- **Price:** **฿30,000 per month**
- **Bedrooms:** 1
- **Bathrooms:** 1

Property Features

- Security
- Gym
- Jacuzzi
- Sauna
- Swimming Pool
- Air Conditioning
- Balcony
- Car Park
- Electricity
- Lift

Location

