

# Nova Atrium - 3 Bed 2 Bath (6th Floor)

Pattaya, Central Pattaya, Thailand

Reference: 20723

## ฿6,696,969



3 Bedrooms



2 Bathrooms



Condo

# Property Description

---

Nova Atrium is an exquisite condominium project that offers luxurious living in a prime location. It is situated in the heart of Pattaya, very close to Pattaya Second Road and Pattaya Central Road, and is just a 5-minute drive from Central Marina, Big C Extra, or Terminal 21. The project also provides a wide range of facilities, including a swimming pool, gym, car parking, and a 24-hour security system, allowing residents to indulge in a comfortable and secure lifestyle.

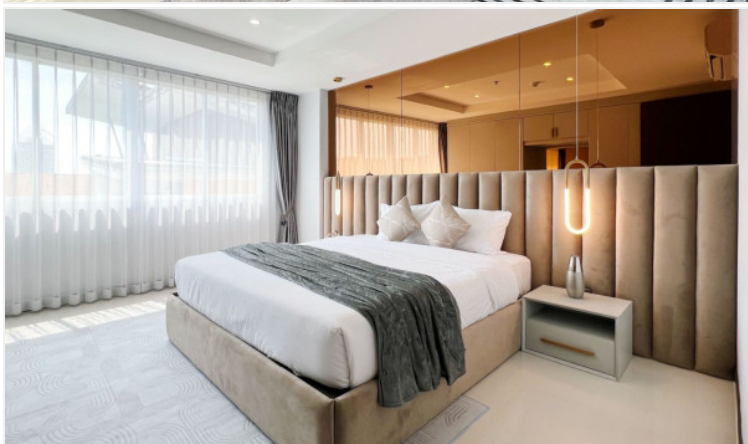
This beautiful, fully renovated 3 bedrooms, 2bathrooms unit is located on the 6th floor with city view and 115 Sq.m of living space. The unit comes fully furnished with a modern kitchen, dining area, and a spacious living room, providing residents with a cozy and elegant living space. (Thai name)

# Photo Gallery

---









## Property Details

---

- **Property Type:** Condo
- **Location:** Pattaya, Central Pattaya, Thailand
- **Internal Area:** 115m<sup>2</sup>
- **Land Area:** 0m<sup>2</sup>
- **Price:** ฿6,696,969
- **Bedrooms:** 3
- **Bathrooms:** 2

## Property Features

---

- Security
- Gym
- Swimming Pool
- Air Conditioning
- Balcony
- Car Park
- Electricity

## Location

---



