

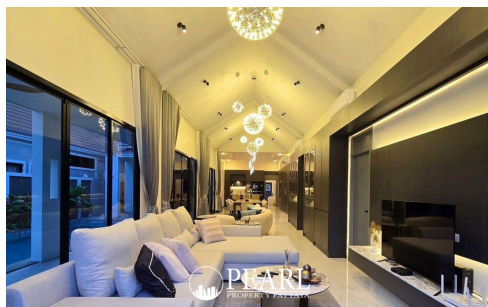
# Modern Nordic Single-Storey House - 5 Bed 6 Bath With Private Swimming Pool

Pattaya, Mabprachan Lake, Thailand  
Reference: 6671

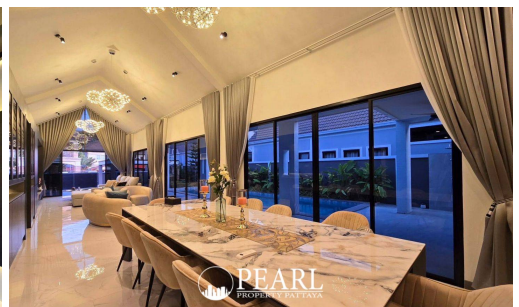
## ฿17,900,000



5 Bedrooms



6 Bathrooms



Villa

# Property Description

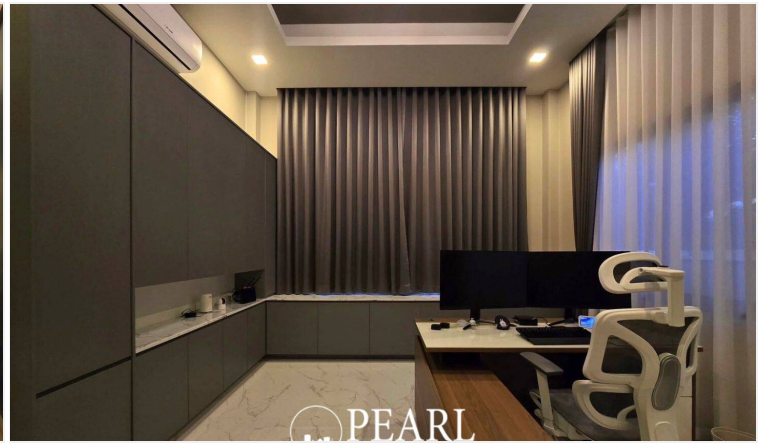
---

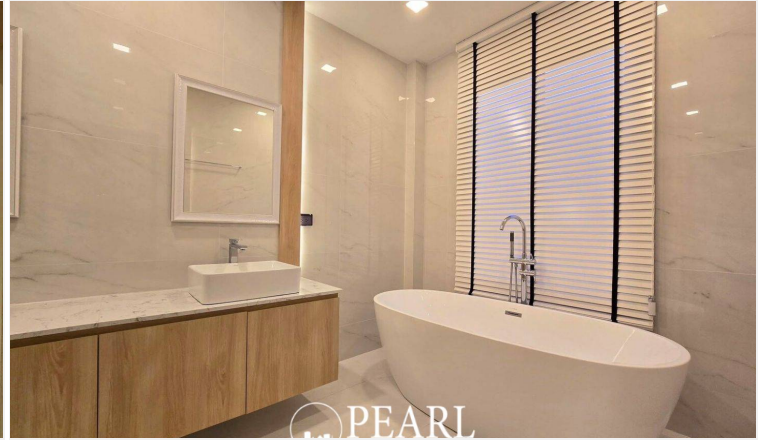
This spacious villa is located near Mabprachan Lake in the East Pattaya area, offering a serene and convenient lifestyle. Surrounded by numerous amenities, it's also close to public parks, perfect for family activities. The property is easily accessible via Highway 7 and 36, just 10 minutes from Siam Country Club Golf Course and Rugby International School, and only a 20-minute drive to Pattaya City. Set on a large 632 sqm plot of land with approximately 300 sqm of living space, this fully furnished home features 5 bedrooms, 6 bathrooms, a dining area, a living area, and a private 3x9-meter swimming pool. The property also includes a garden and a car park, offering ample space for comfortable living.

# Photo Gallery

---







# Property Details

- **Property Type:** Villa
- **Location:** Pattaya, Mabprachan Lake, Thailand
- **Internal Area:** 300m<sup>2</sup>
- **Land Area:** 632m<sup>2</sup>
- **Price:** ฿17,900,000
- **Bedrooms:** 5
- **Bathrooms:** 6

# Location

