

M Mountain Grand Elite Villa - 6 Bed 8 Baths Private Pool

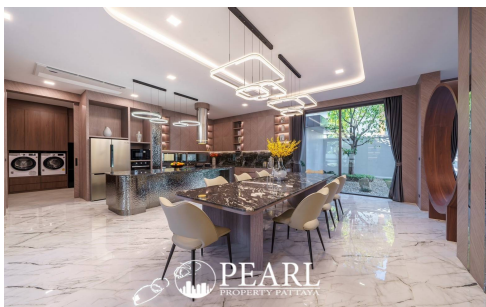
Muang Pattaya, East Pattaya, Thailand

Reference: 9161

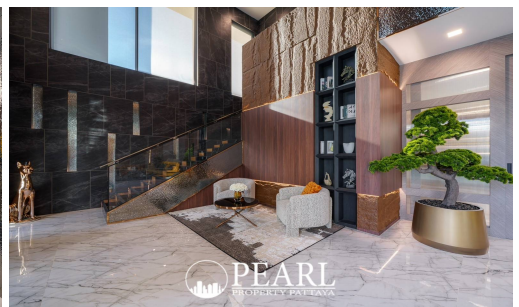
฿89,000,000



6 Bedrooms



8 Bathrooms



Villa

Property Description

M Mountain Grand Villa, an exclusive enclave nestled in the serene landscapes of East Pattaya, Thailand. This boutique development offers a limited collection of nine meticulously designed homes, ensuring residents enjoy unparalleled privacy and tranquility.

Property Highlights:

- **Land Size:** 1,600 sqm
- **Usable Area:** 1,515 sqm
- **Bedrooms:** 6, including 3 master bedrooms with Jacuzzi
- **Bathrooms:** 8, including a guest restroom
- **Living Room:** Grand 5-meter high ceiling, creating an open and airy atmosphere
- **Kitchen:** European kitchen with dining area, complemented by a separate kitchen and laundry room
- **Features:**
 - Counter bar for casual dining and entertaining
 - Spacious overflow pool at the heart of the property
 - 3-car garage providing ample parking and storage space

Layout & Design:

Upon entering, you're greeted by a grand living room with a towering 5-meter ceiling, offering a sense of grandeur and space. The villa features two luxurious master bedrooms with direct views of the serene pool, ensuring a tranquil retreat.

The European kitchen and dining area are designed for both functionality and style, perfect for hosting family meals or entertaining guests. Additionally, the villa includes a fully equipped secondary kitchen and a laundry room, catering to all household needs.

The villa boasts an impressive total of eight bathrooms, ensuring convenience and privacy for all residents and guests. The guest restroom is thoughtfully placed for easy access from the common areas.

Outdoors, the centerpiece overflow pool provides a refreshing oasis, surrounded by landscaped gardens and lush greenery. The villa also includes a counter bar, ideal for outdoor dining and socializing.

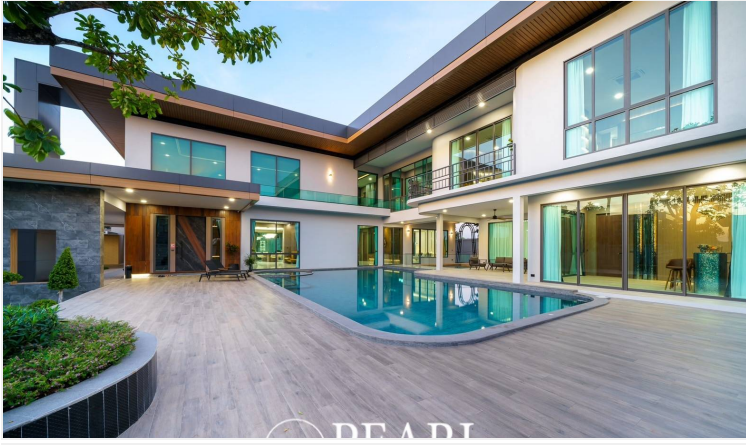
With a spacious garage accommodating up to four cars, this property ensures that all your storage and parking needs are met.

Location:

Situated in the desirable area of Toongklon Talman in East Pattaya, this villa offers a perfect blend of tranquility and accessibility. Enjoy the peaceful surroundings while being just a short drive away from Pattaya's vibrant city life, shopping, dining, and entertainment options.

Experience the pinnacle of luxury living in this magnificent villa. Contact us today to arrange a private viewing and discover the exceptional lifestyle that awaits you in East Pattaya.

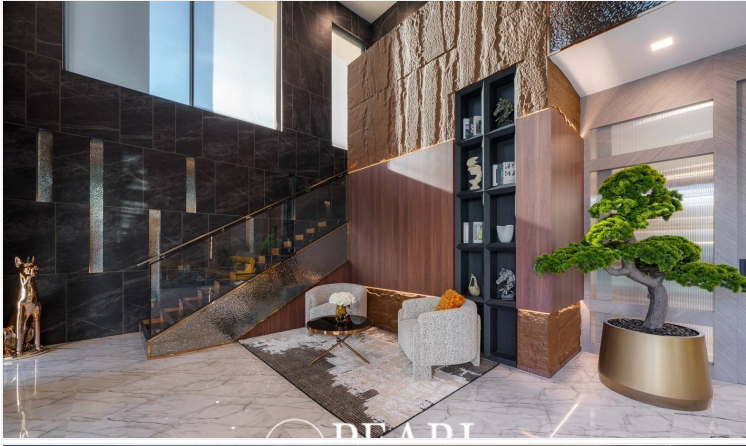
Photo Gallery



DE ADI



DE ADI



DE ADI



DE ADI



DE ADI



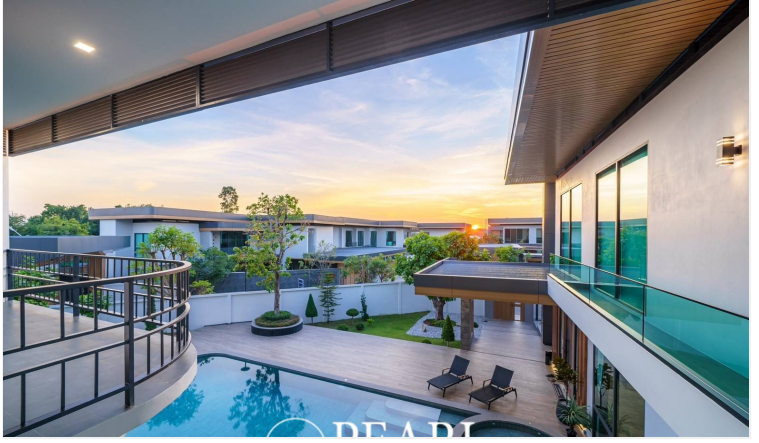
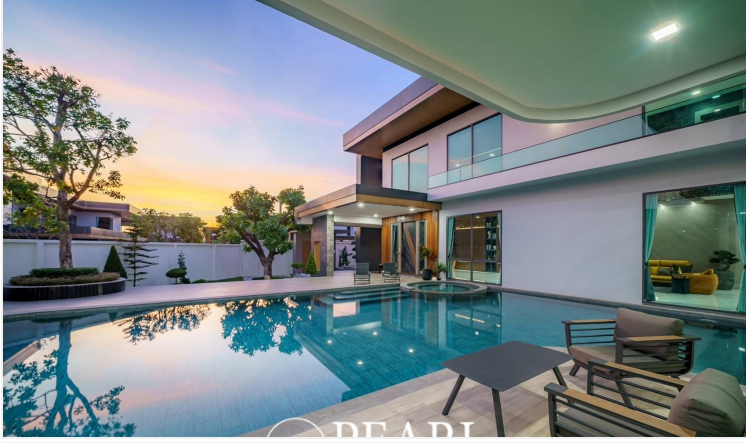
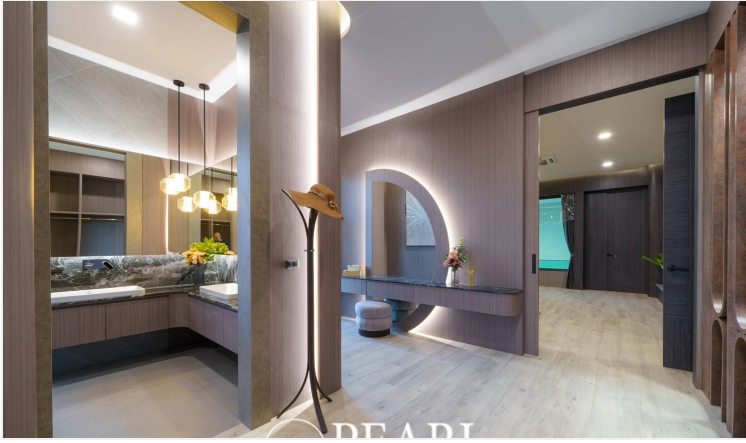
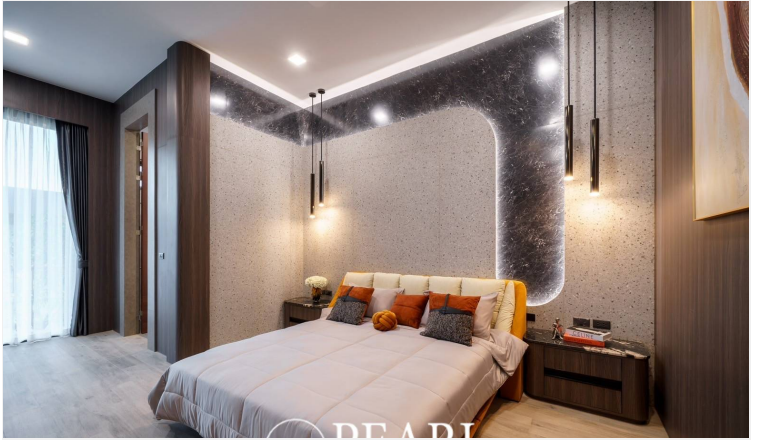
DE ADI



DE ADI



DE ADI



PROPER PROPERTY

Property Details

- **Property Type:** Villa
- **Location:** Muang Pattaya, East Pattaya, Thailand
- **Land Area:** 1600m²
- **Price:** **฿89,000,000**
- **Bedrooms:** 6
- **Bathrooms:** 8

Property Features

- Gym
- Jacuzzi
- Swimming Pool
- Car Park

Location

