

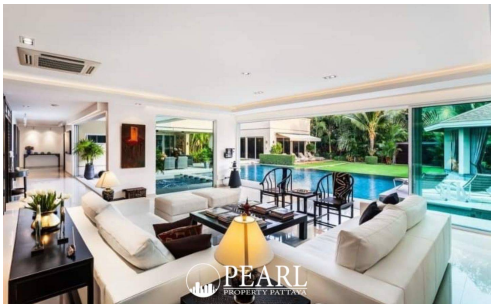
Luxurious Pool Villa Near Mabprachan Lake - 8 Bed 5 Bath and Guest House

Pattaya, Mabprachan Lake, Thailand
Reference: 5477

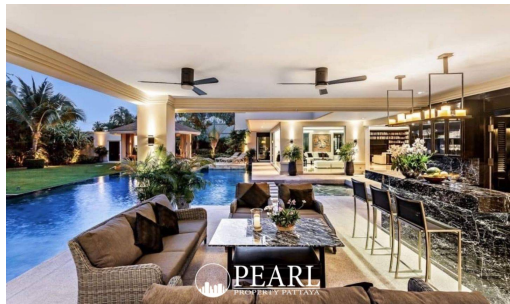
฿65,000,000



8 Bedrooms



5 Bathrooms



Villa

Property Description

Discover Your Dream Home

Top designers and craftsmen have spent two years meticulously creating this stunning luxury villa, resulting in an extraordinary residence that truly stands apart. Every detail has been thoughtfully designed to please the eye, ensuring that nothing in this property is a coincidence. With top-quality materials and a flawless design, this dwelling offers everything you could desire.

Nestled in East Pattaya, atop Mabprachan Lake, this home provides both privacy and convenient access. It is just minutes away from the prestigious Regent International School Pattaya and Rugby School Thailand, while also being conveniently located near the motorway. Enjoy the vibrant life of downtown Pattaya and the beach, only 15 minutes away, with Suvarnabhumi Airport just over an hour's drive.

This stunning home is ready for you to move in, featuring a generous land size of 1,828.59 square meters and an impressive interior space of 731.68 square meters. Fully furnished and decorated, it is designed for comfort and elegance. The exquisite black Chinese lacquer woodwork flows throughout the home, adding a touch of sophistication. The state-of-the-art European kitchen is fully equipped, making it a dream for any culinary enthusiast.

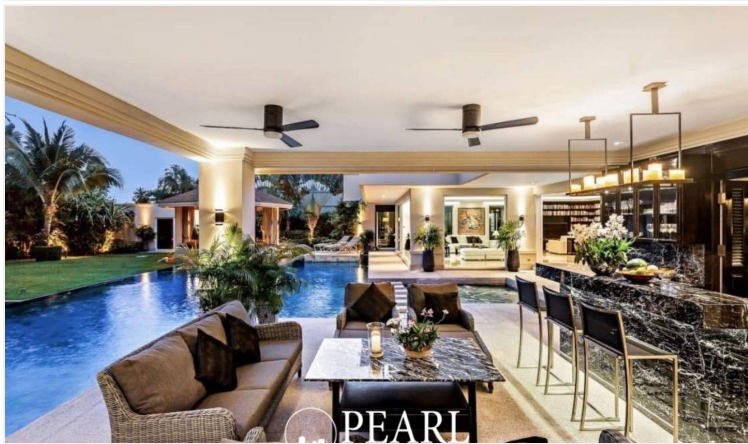
Step outside to find a large salt-water infinity swimming pool complemented by a luxurious Jacuzzi, perfect for relaxation. The shaded porch, bar, and lanai area offer an ideal setting for entertaining or enjoying quiet moments in your own oasis. The garage provides ample space for your vehicles with double parking.

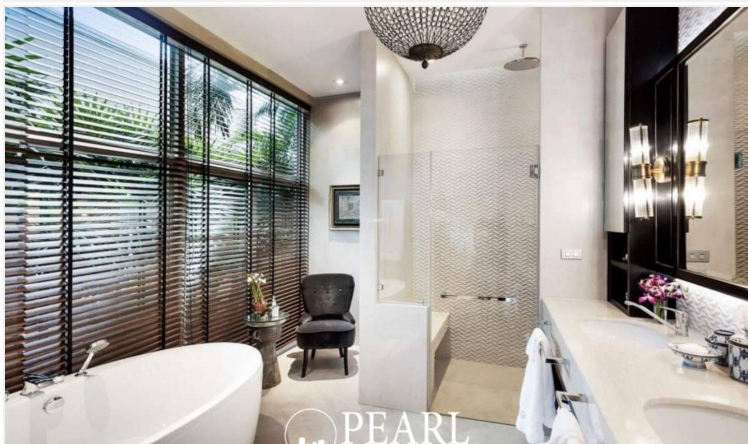
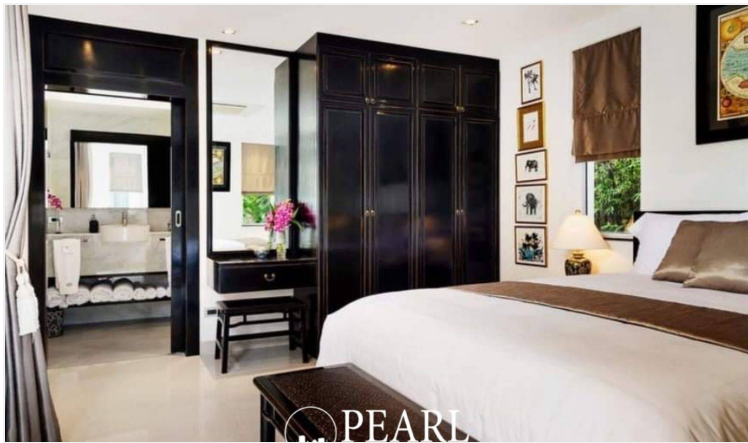
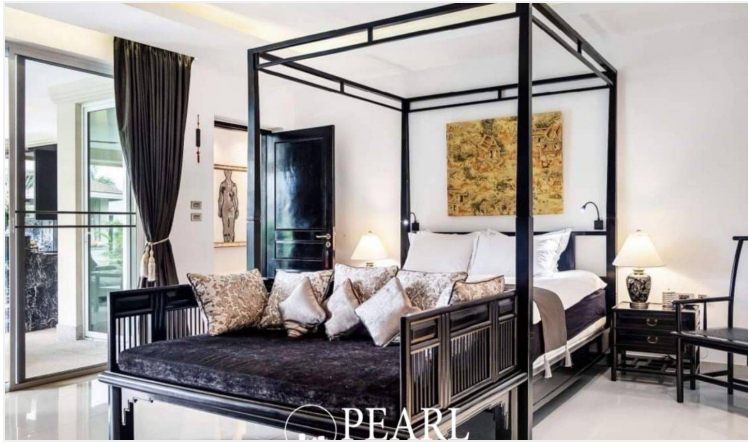
Inside, the elegant open-plan main lounge features a stunning library wall, perfect for relaxation or entertaining guests. State-of-the-art B&O Beosound Wi-Fi equipment ensures high-quality audio throughout the home. Connected to the main lounge, the spacious principal bedroom includes a walk-in wardrobe and a stunning luxury ensuite bathroom. A generous guest bedroom with its own ensuite offers privacy and comfort.

For your guests, a separate bungalow is equipped with an ensuite bathroom, ensuring a welcoming experience. Stay fit in your own fully equipped gymnasium, complete with a bathroom, or use the versatile office space that can also serve as a guest bedroom. Two twin guestrooms, each with ensuite bathrooms, provide additional comfort for family or friends.

This exceptional property combines luxury, convenience, and functionality, making it the perfect place to call home. Don't miss the opportunity to make this dream home yours!

Photo Gallery





Property Details

- **Property Type:** Villa
- **Location:** Pattaya, Mabprachan Lake, Thailand
- **Internal Area:** 731.68m²
- **Land Area:** 1829m²
- **Price:** ฿65,000,000
- **Bedrooms:** 8
- **Bathrooms:** 5

Location

