

Luxurious 2-Bedroom Condo with Breathtaking Sea Views at Amari Residences

Pattaya, Pratumnak, Thailand
Reference: 3763

฿15,990,000



2 Bedrooms



1 Bathrooms



Condo

Property Description

Introduction Nestled in the prestigious Amari Residences, this recently renovated 2-bedroom, 1-bathroom condo offers an exquisite blend of luxury and comfort. Spanning a generous 115 sqm, this property stands out with its expansive balcony boasting panoramic sea views and a large, modern kitchen, setting the stage for an unparalleled living experience in Pattaya's sought-after Pratumnak area.

Location and Neighborhood Located in the serene and upscale Pratumnak neighborhood, this condo offers a tranquil retreat just moments away from the vibrant city life. Its prime location ensures easy access to Pattaya's bustling shopping centers, fine dining restaurants, and lively entertainment venues. The serene Pratumnak Beach is just a stone's throw away, offering a perfect spot for relaxation and seaside activities.

Property Details This condo, situated on a high floor, captures the essence of modern living. It features two well-appointed bedrooms and a contemporary bathroom, meticulously designed for comfort and style. The highlight of this unit is the spacious balcony that opens up to mesmerizing sea views, providing a serene backdrop for your morning coffee or evening relaxation. The large, state-of-the-art kitchen is equipped with high-end appliances, perfect for culinary enthusiasts.

Condition and Amenities Having undergone recent renovations, this condo exudes a fresh, modern feel with high-quality finishes and fixtures. Residents of Amari Residences enjoy access to world-class amenities including a swimming pool, fully-equipped gym, secure parking, and 24-hour security, ensuring a lifestyle of convenience and safety.

Financial Information For more information regarding the yearly management fees and sinking fund, interested parties are encouraged to contact us directly.

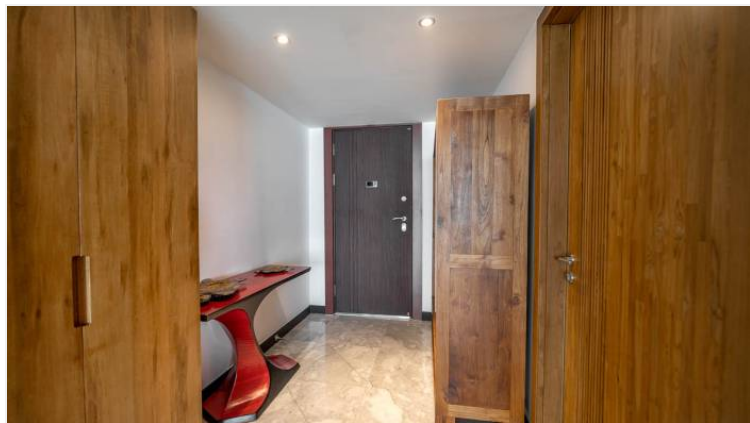
Contact Information To schedule a viewing or for any inquiries, please reach out to Pearl Property:

- Tel: +66-33-135-053
- Whatsapp: +66-33-135-053

- Line: @pearlproperty
- Email: info@pearlpropertypattaya.com

Photo Gallery





Property Details

- **Property Type:** Condo
- **Location:** Pattaya, Pratumnak, Thailand
- **Internal Area:** 115m²
- **Land Area:** 2844m²
- **Price:** ฿15,990,000
- **Bedrooms:** 2
- **Bathrooms:** 1

Property Features

- Security
- Gym
- Sauna
- Swimming Pool
- Air Conditioning
- Balcony
- Car Park
- Electricity
- Integral Kitchen
- Internet
- Alarm
- Children's Area
- Concierge
- Guardhouse
- Lift
- Equipped Kitchen

Location

