

# Living 36 At Pong Mabprachan Lake Pattaya

Pattaya, Pong, Thailand  
Reference: 6476

฿10,990,000



3 Bedrooms

0 Bathrooms

Villa

# Property Description

---

Welcome to Living 36 At Pong Mabprachan Lake, Pattaya

Nestled in the serene and picturesque setting of Mabprachan Lake, Living 36 offers an unparalleled living experience in Pattaya. This exclusive house project combines modern design with natural beauty, providing a perfect retreat for those seeking tranquility and comfort.

## Prime Location with Scenic Views

Located in the desirable Pong area, Living 36 boasts a prime location with stunning views of Mabprachan Lake. The neighborhood is known for its peaceful atmosphere and lush greenery, making it an ideal choice for families and individuals alike. Residents can enjoy easy access to essential amenities, including international schools, shopping centers, healthcare facilities, and a variety of dining options. The proximity to major roads ensures convenient connectivity to Pattaya city center and other key destinations.

## Exquisite Property Details

Living 36 features a selection of beautifully designed houses, each thoughtfully crafted to offer spacious and comfortable living spaces. The project includes:

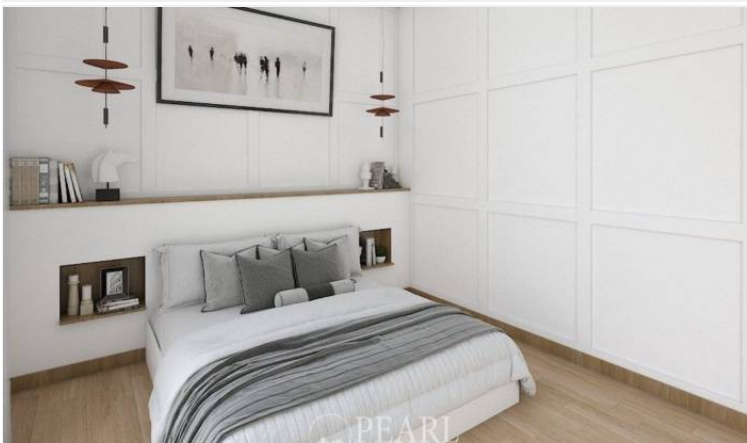
- 3 Bedrooms: Generously sized bedrooms perfect for families.
  - 4 Bathrooms: Modern and well-appointed bathrooms for ultimate convenience.
  - Private Garden: A lush garden area to enjoy outdoor activities and relaxation.
  - Spacious Living Areas: Open-plan living and dining areas designed for both style and functionality.
  - Fully Equipped Kitchen: Contemporary kitchens with high-quality appliances.
  - Covered Parking: Secure parking spaces for residents' vehicles.
- Exceptional Condition and Amenities

# Photo Gallery

---







# Property Details

- **Property Type:** Villa
- **Location:** Pattaya, Pong, Thailand
- **Internal Area:** 170m<sup>2</sup>
- **Land Area:** 410m<sup>2</sup>
- **Price:** ฿10,990,000
- **Bedrooms:** 3
- **Bathrooms:** 0

# Location

