

Jomtien Condotel - 1 Bed 1 Bath (3rd Floor)

Pattaya, Jomtien, Thailand
Reference: 21392

฿3,300,000



1 Bedrooms



1 Bathrooms



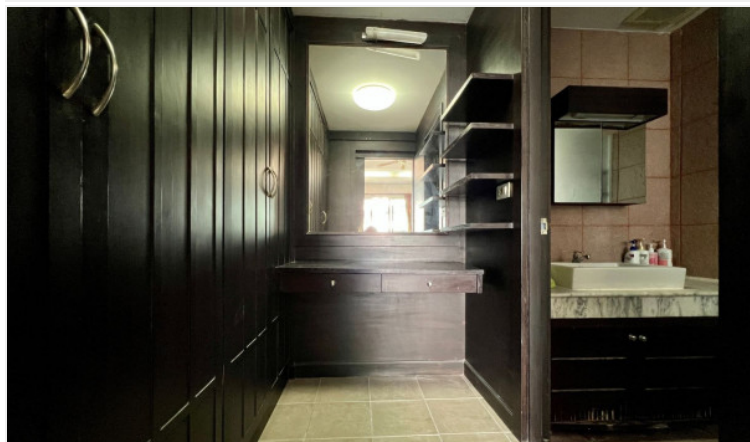
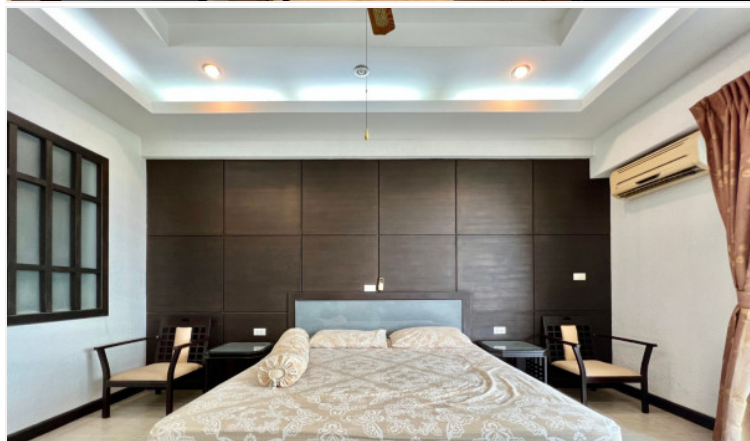
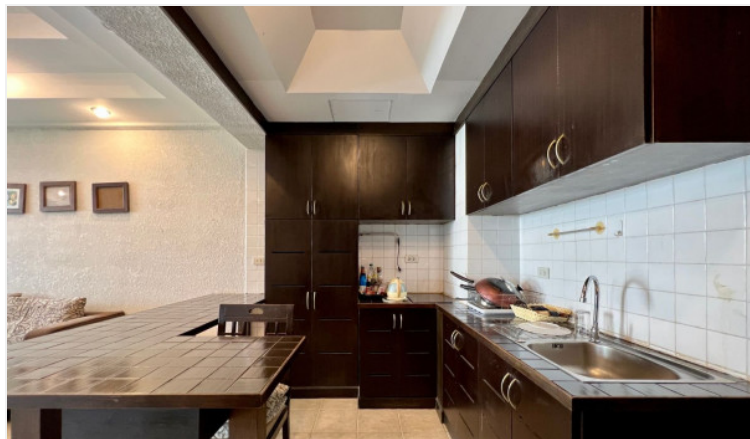
Condo

Property Description

Jomtien Condotel a resort-style condominium offers the perfect combination between a blissful beachfront atmosphere and a truly relaxing stay. Positioned in the potential location, it offers the most convenient living with only a few steps to Dongtan Beach. Close to everything you could wish, restaurants, bars, taxi routes, Just 10 minutes drive to Pattaya City and Jomtien. Moreover, every residential unit is divided into perfect proportions taking into account the optimal use of the space. It also features full facilities, including a large outdoor swimming pool, fully-equipped fitness center and 24-hour security system.

Photo Gallery







Property Details

- **Property Type:** Condo
- **Location:** Pattaya, Jomtien, Thailand
- **Internal Area:** 72m²
- **Land Area:** 72m²
- **Price:** ฿3,300,000
- **Bedrooms:** 1
- **Bathrooms:** 1

Property Features

- Security
- Gym
- Swimming Pool
- Tennis Court
- Air Conditioning
- Balcony
- Car Park
- Electricity
- Lift

Location

