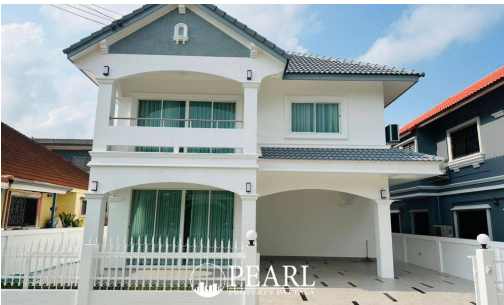


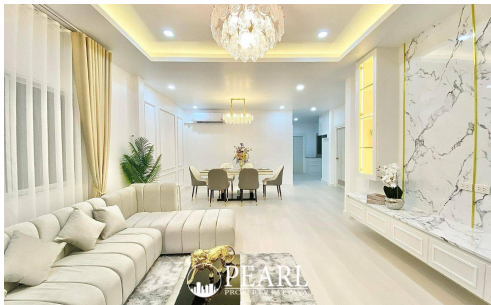
House For Sale -4 Bedroom 3Bathroom

Pattaya, Pattaya, Thailand
Reference: 6316

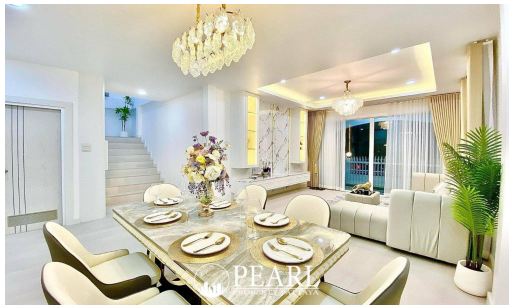
฿6,500,000



4 Bedrooms



3 Bathrooms



Villa

Property Description

Pearl Property presents this spacious 2-storey detached home in the popular Country Club Village, located on Soi Thung Klom, just moments from Udomsuk Demonstration School and South Pattaya’s top amenities.

Set on **52 square wah** of land, this well-maintained 4-bedroom, 3-bathroom home offers both privacy and convenience in a secure community. Enjoy private parking for 3 cars (1 in-house, 2 outside) and a fully furnished interior with high-value extras included—ready to move in!

Property Features:

- 4 bedrooms, 3 bathrooms
- 2-storey detached house
- 52 sq.wah land area
- Covered parking + street parking
- Located in a quiet and secure neighborhood

Fully Furnished with Bonus Inclusions:

- Built-in TV shelves in living, kitchen & bedrooms
- Built-in kitchen with sink, hob & hood
-

4 complete bedroom sets

- Curtains throughout
- Sofa set + dining table (6 seats)
- 5 air-conditioning units
- Water tank and pump

Community & Nearby Amenities:

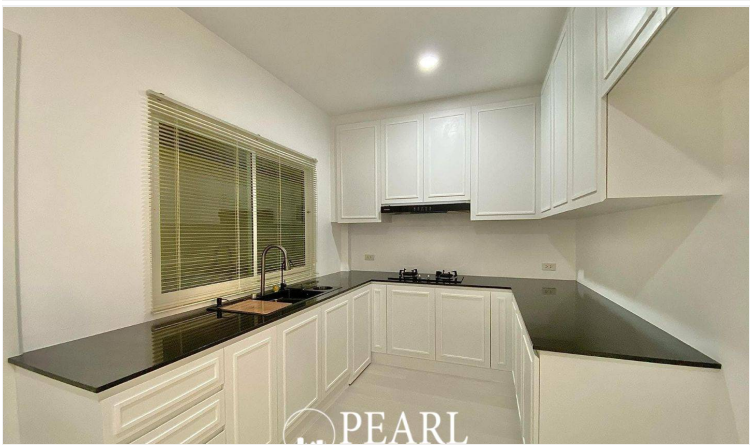
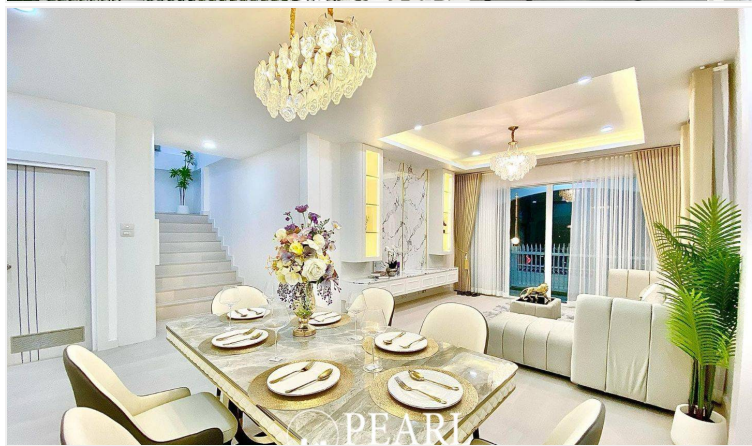
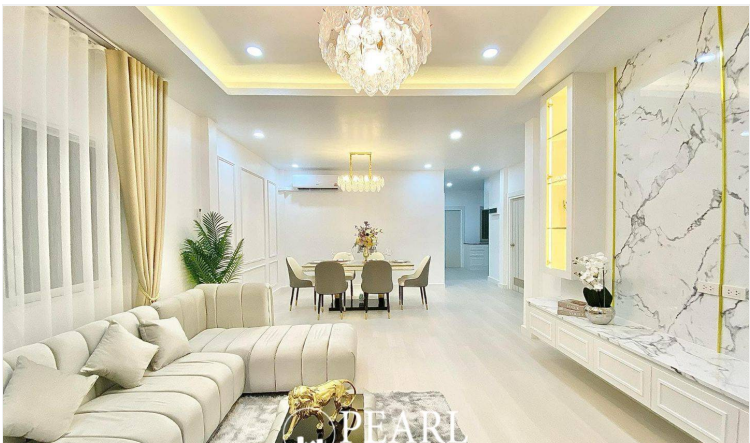
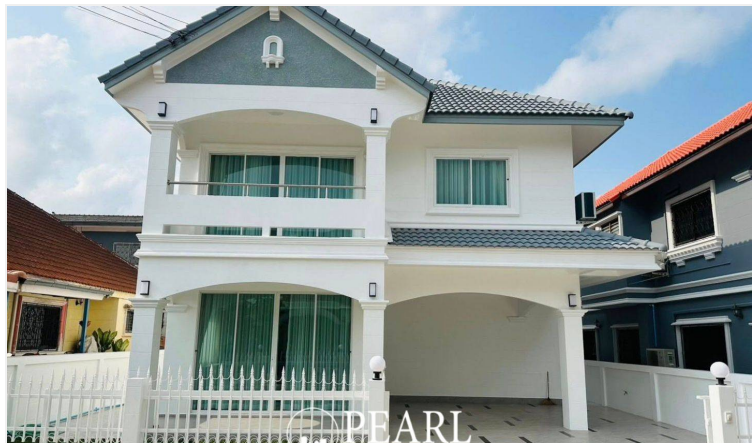
- 24-hour security
- Public park and communal swimming pool
- 7-Eleven just 100m away

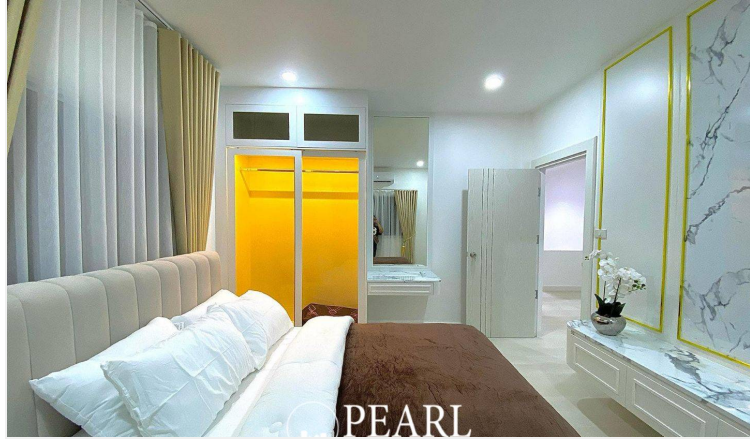
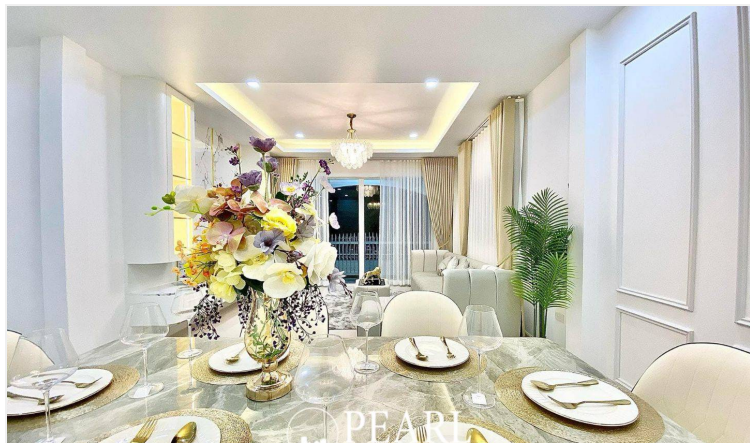
- Railway Road junction: 60m
- Sukhumvit-Pattaya 89 Rd: 350m
- Udomsuk Demonstration School: 500m
- Tara Pattana International School: 4 km
- Makro South Pattaya: 1 km
- Lotus's South Pattaya: 2.3 km
- Jomtien Beach: 4 km

Perfect for families seeking a peaceful neighborhood with great connectivity, this home offers exceptional value with all furnishings included.

Contact us today to schedule a private viewing or virtual tour.

Photo Gallery





Property Details

- **Property Type:** Villa
- **Location:** Pattaya, Pattaya, Thailand
- **Internal Area:** 200m²
- **Land Area:** 208m²
- **Price:** ฿6,500,000
- **Bedrooms:** 4
- **Bathrooms:** 3

Location

