

# Horizon By Patta - 4 Bed 4 Bath With Private Pool

Nong Pla Lai, Thailand  
Reference: 24346

฿13,390,000



4 Bedrooms



4 Bathrooms



Villa

# Property Description

---

## A matter of space

Experience the function of space and serenity within the exclusive hideaway from hectic lives, yet accessible to the city center, Live harmoniously with nature in the greenery landscape with amenities that serve all living complacency.

Optimize the space of ease with our forward-thinking design principles, all three house models fuse the modern contemporary style with tropical architecture, providing the best functional spaces that complement the modern lifestyles embraced within Pattaya city.

## Types and Details

- Home Type : Sunne, Shine, Ray
- 4 Bedrooms, 3 Bathrooms and 4 Bedrooms, 4 Bathrooms
- Land area size : starting from 63.60 - 151 Sq.m
- Living area size : starting from 203 - 263 Sq.m.

## Elevate the leisure experience

The 3-story clubhouse seamlessly aligns with the 'Modern contemporary' architectural concept, setting a new standard for luxury in terms of functionalities and utilities. Purposefully crafted in each detail for a seamless experience, the amenities clude a spacious fitness center, a 25- meter-long salt chlorinator swimming pool and a rooftop lounge where you can see the horizon line.

All facilities are curated to elevate the relaxation experience, from the training space with a fully equipped fitness center and a delightful jacuzzi, with a pool park, entertainment lounge, to a rooftop lounge. Also, the multi-functional park provides various activities, suiting every family member, from a bike lane, running track, mini golf, and skatepark to a kid space. Entertainment Lounge.

\* Empty house and Sanitary ware

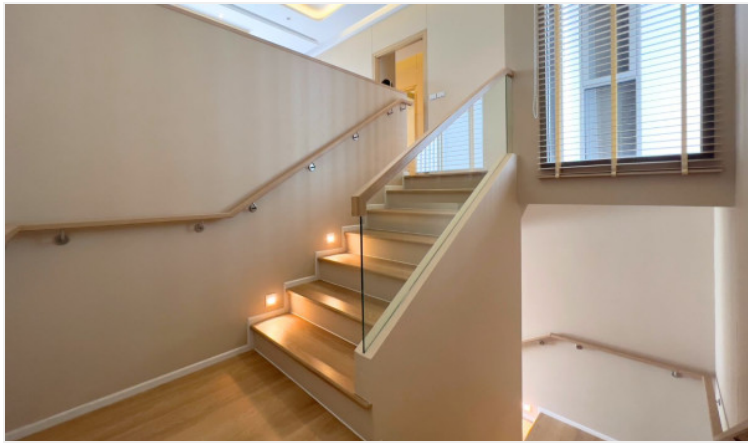
# Photo Gallery

---









# Property Details

---

- **Property Type:** Villa
- **Location:** Nong Pla Lai, Thailand
- **Internal Area:** 263m<sup>2</sup>
- **Land Area:** 604m<sup>2</sup>
- **Price:** ~~฿~~**13,390,000**
- **Bedrooms:** 4
- **Bathrooms:** 4

# Property Features

---

- Security
- Sauna
- Swimming Pool
- Air Conditioning
- Balcony
- Car Park
- Electricity
- Children's Area

# Location

---

