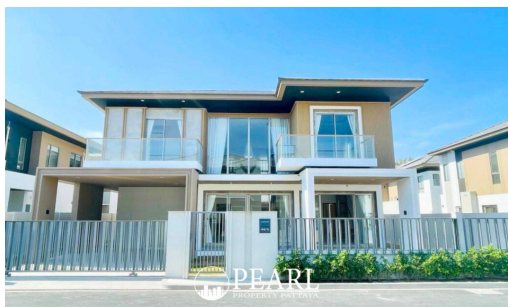


# Horizon by Patta - 4 Bed 4 Bath (Type Sunne)

Pattaya, East Pattaya, Thailand

Reference: 2226

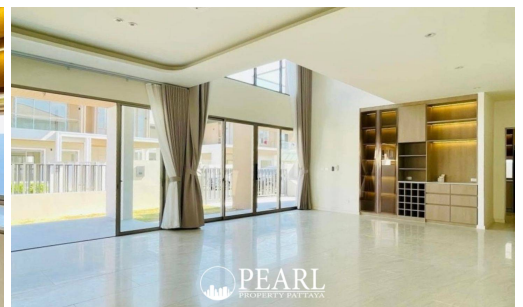
## ฿12,800,000



4 Bedrooms



4 Bathrooms



Villa

## Property Description

---

Welcome to HORIZON, a modern residential development located in East Pattaya, offering the perfect blend of convenience and comfort. Just a 5-minute drive from the serene Mabprachan Lake and only 15 minutes from central Pattaya, this prime location is surrounded by essential amenities, including international schools, golf courses, cafes, restaurants, local shops, and markets.

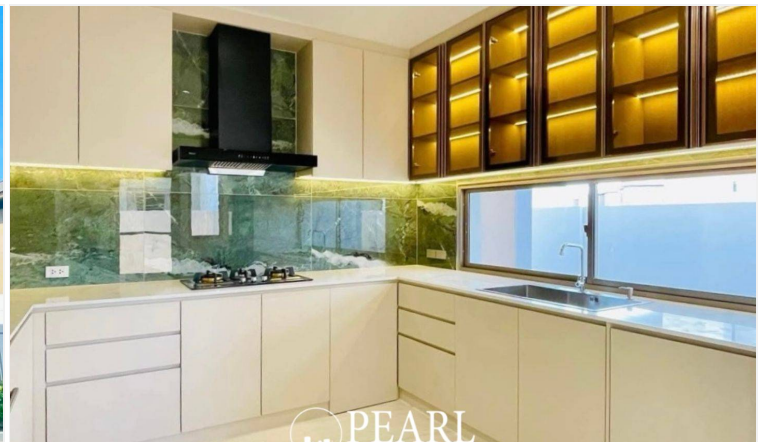
HORIZON features an extensive range of on-site facilities designed to enhance your lifestyle. Enjoy access to a clubhouse, dedicated bike lane, communal pool, beautifully landscaped gardens, a sauna, rooftop lounge, jacuzzi, running track, main park, children's playground, mini golf, skate park, and exercise park. With top-tier security measures including CCTV surveillance, 24-hour security personnel, and an underground cable system, you can feel at ease knowing your safety is a priority.

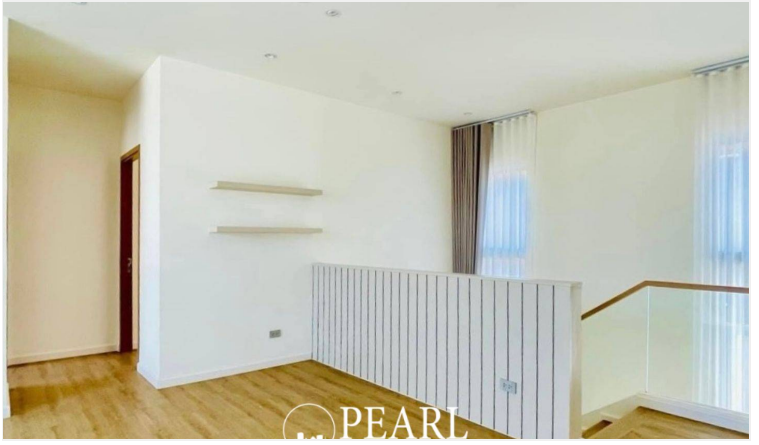
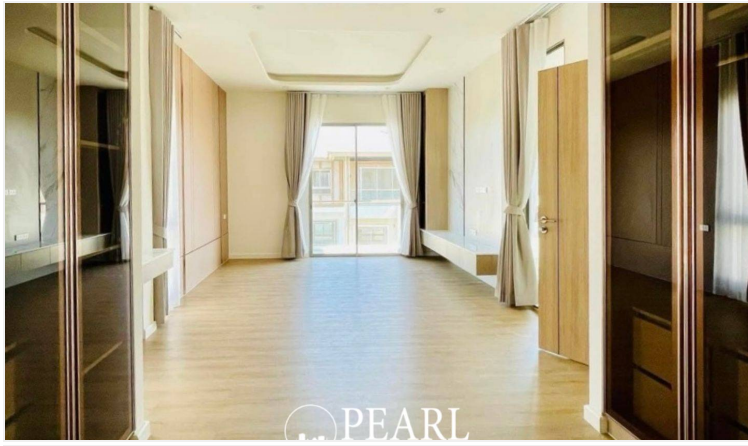
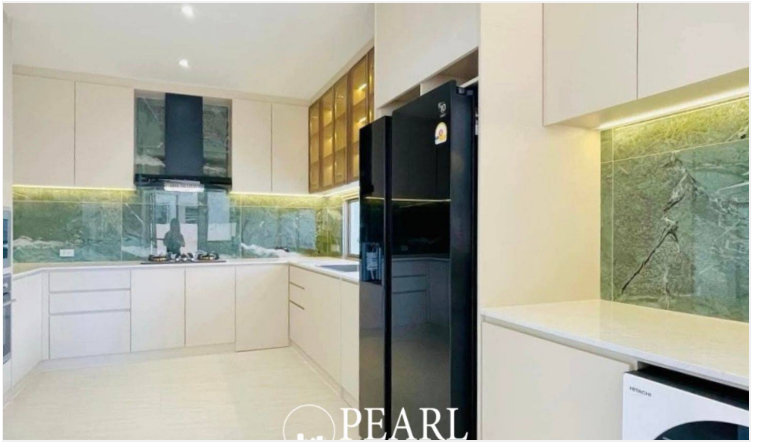
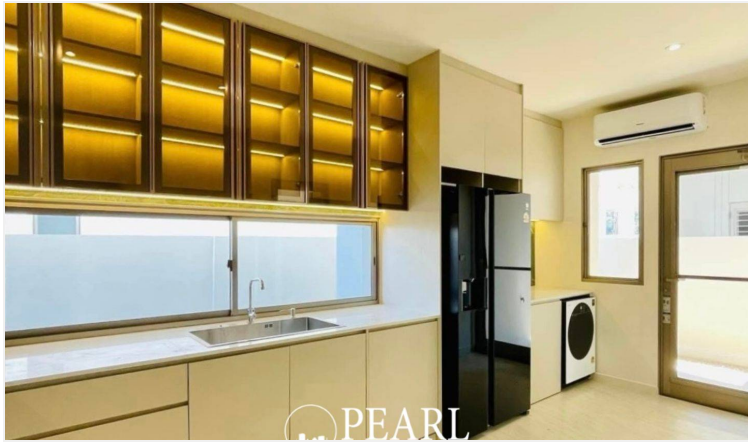
This two-story, 4-bedroom, 4-bathroom home spans 263 sq m of living space on a 288 sq m plot. The house comes fully fitted with a European-style kitchen, spacious dining area, and an expansive living room featuring high ceilings. The master bedroom includes a walk-in closet and a luxurious bathtub. Additional features include a storage room, private garden, and covered parking.

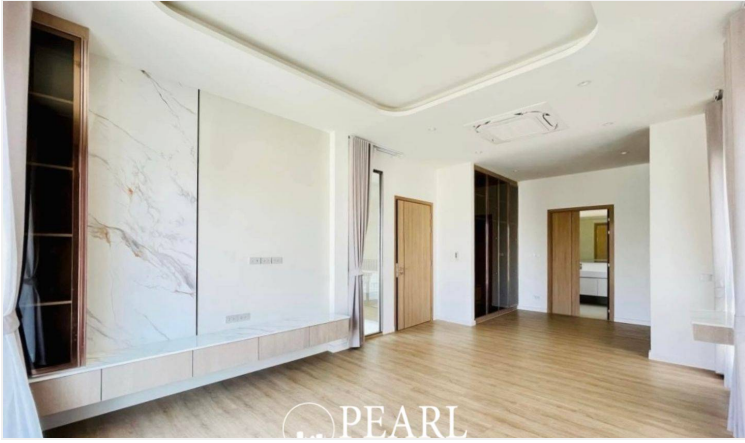
Available for sale in company name, this move-in-ready home offers the perfect blend of modern living and security in one of East Pattaya's most desirable locations.

## Photo Gallery

---







## Property Details

- **Property Type:** Villa
- **Location:** Pattaya, East Pattaya, Thailand
- **Internal Area:** 263m<sup>2</sup>
- **Land Area:** 288m<sup>2</sup>
- **Price:** ฿12,800,000
- **Bedrooms:** 4
- **Bathrooms:** 4

## Location

