

# Green Field Villa 2

Muang Pattaya, Map Yai Lia, Thailand  
Reference: 8086

฿15,900,000



3 Bedrooms



0 Bathrooms



Villa

# Property Description

---

**Green Field Villa 2** — a tranquil executive villa community in Nong Prue, East Pattaya offering spacious homes, strong amenities, and excellent connectivity.

## Overview

- Developed by *Innovation Travel & Marketing Co., Ltd.*, this project was completed in June 2009.
  
- Comprising **59 detached homes** spread across a quiet, landscaped private village.

## Property & Design

- Homes are 1-2 storey detached villas with **3 bedrooms, 3 bathrooms**, and 1 car parking space as standard.
  
- Living areas begin at approx. **480 square meters**.
  
- Built with modern design touches, elegant finishes, and an emphasis on light and indoor-outdoor living. Spacious floorplans suit families.

## Amenities & Facilities

- 24-hour security with CCTV.
- Large communal swimming pool, children's paddling pool, and fitness centre.
- Landscaped gardens, playground for children, and well-maintained common areas contribute to a peaceful, community-focused living environment.

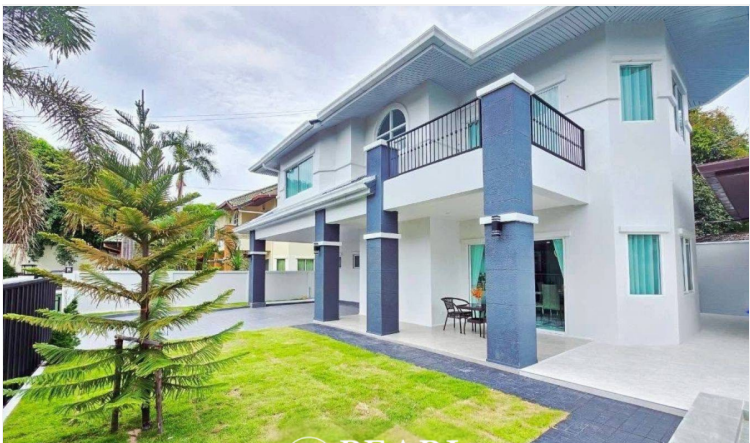
## Location & Convenience

- Very near Regent International School, with good road access to Highways 7 & 36.
- Shopping, daily amenities, clinics, and restaurants are all just a short drive away.



# Photo Gallery

---



## Property Details

---

- **Property Type:** Villa
- **Location:** Muang Pattaya, Map Yai Lia, Thailand
- **Land Area:** 10000m<sup>2</sup>
- **Price:** ~~฿~~**15,900,000**
- **Bedrooms:** 3
- **Bathrooms:** 0

## Property Features

---

- Security
- Swimming Pool
- Car Park
- Children's Area

## Location

---

