

Grand Solaire Noble - 1 Bed 1 Bath (Type 1B-B)

Pattaya, Central Pattaya, Thailand
Reference: 8242

฿6,047,000



1 Bedrooms



1 Bathrooms



Condo

Property Description

Luxury Living Redefined

Discover the epitome of luxury at Grand Solaire Noble, a stunning high-rise condominium set to reshape Pattaya’s skyline. This 50-storey marvel, completing by the end of 2028, offers unmatched lifestyle experiences in the heart of Pattaya City.

Prime Location

Situated on Pattaya’s 3rd Road, Grand Solaire Noble places you at the center of the city’s vibrant entertainment while providing a serene escape to Pattaya’s famous beaches. Enjoy proximity to Pattaya Bay, Pratumnak Hill, Jomtien Beach, and Koh Larn Island with breathtaking panoramic views. Essential conveniences like Family-Mart and Seven-Eleven are a 3-minute walk away, and Tuk Com IT Shopping Center is just an 8-minute stroll. Popular attractions such as Walking Street and Royal Garden Shopping Center are within a 10-minute drive.

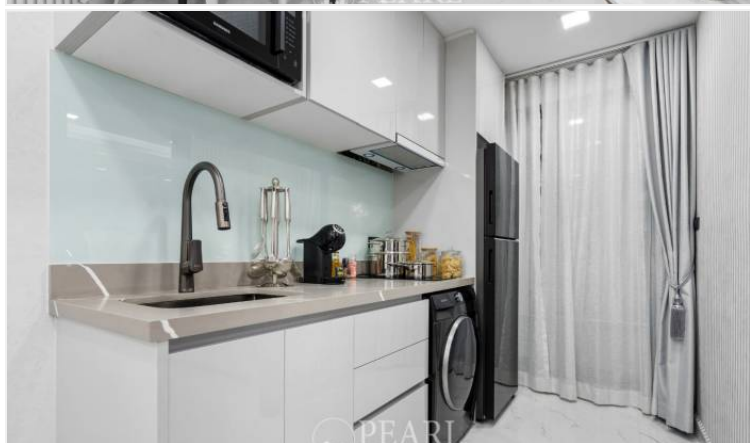
Exquisite Property Details

Grand Solaire Noble offers 1,750 diverse living spaces, from chic studios to luxurious 3-4 bedroom high-floor units. For ultimate luxury, VIP penthouses with private pools and gardens are available.

Exceptional Amenities

- 9-Meter-High Hotel-Style Lobby: Grandeur and elegance welcome you.
 - On-Site Dining and Co-Working Spaces: Coffee shop, restaurant, and co-working facilities.
 - Outdoor Sports Facilities: Engage in a variety of activities.
 - 5th Floor Oasis: Olympic-size pool, lazy river, and pool bar.
 - Dedicated Fitness Center: Complete with steam and sauna zones.
 - Rooftop Extravaganza: 360° SkyPool, international cocktail bar, restaurant, and SkyWalk with glass floor for breathtaking views.
- Experience the pinnacle of luxury living at Grand Solaire Noble.

Photo Gallery





Property Details

- **Property Type:** Condo
- **Location:** Pattaya, Central Pattaya, Thailand
- **Internal Area:** 43.5m²
- **Land Area:** 12800m²
- **Price:** ~~฿6,047,000~~
- **Bedrooms:** 1
- **Bathrooms:** 1

Property Features

- Security
- Gym
- Jacuzzi
- Sauna
- Swimming Pool
- Air Conditioning
- Balcony
- Car Park
- Electricity
- Alarm
- Children's Area
- Lift
- Roof Garden
- Terrace
- Library

Location

