

Grand Condotel

Pattaya, Jomtien, Thailand

Reference: 322

฿50,000



2 Bedrooms

2 Bathrooms

Condo

Property Description

Introduction

Grand Condotel Pattaya - Experience the epitome of luxury living in one of Pattaya's most prestigious beachfront condominiums. Boasting a prime location and unparalleled comfort, this condo project stands as a testament to modern architectural excellence and superior lifestyle.

Location and Neighborhood

Nestled in the vibrant heart of Pattaya, Grand Condotel offers an exceptional living experience. Located just steps away from the pristine Dongtan Beach, it presents a perfect blend of tranquility and city life. The neighborhood is a hub of activity, featuring top-notch restaurants, bustling markets, and vibrant nightlife. With easy access to public transportation and main roads, residents enjoy seamless connectivity to the entire city.

Property Details

Grand Condotel, a high-rise landmark, offers a variety of spacious units ranging from elegant studio apartments to luxurious multi-bedroom suites. Each unit is designed with a focus on comfort and style, featuring large windows for ample natural light and breathtaking sea views. The project includes facilities like a large swimming pool, landscaped gardens, and a fully-equipped fitness center.

Condition and Amenities

This well-maintained property boasts state-of-the-art amenities, ensuring residents a lifestyle of ease and sophistication. The complex includes a large communal swimming pool, a modern fitness center, and lush gardens. Enhanced security systems, covered parking, and 24-hour concierge services add to the exclusive living experience.

Financial Information

Interested buyers and investors can get detailed information about pricing, management fees, and any applicable taxes by contacting Pearl Property. The investment potential of Grand Condotel is significant,

Pearl Property Pattaya

given its desirable location and high-quality amenities.

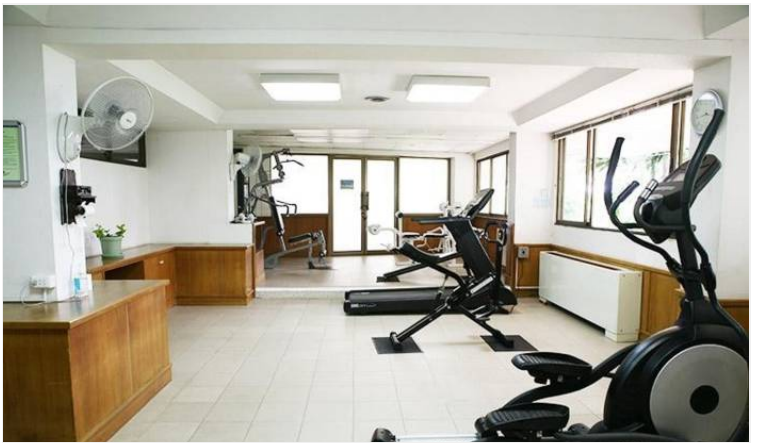
Contact Information

For more information or to schedule a viewing, please contact Pearl Property:

- Tel: +66-33-135-053
- Whatsapp: +66-33-135-053
- Line: @pearlproperty
- Email: info@pearlpropertypattaya.com

Photo Gallery





Property Details

- **Property Type:** Condo
- **Location:** Pattaya, Jomtien, Thailand
- **Price:** ฿50,000
- **Bedrooms:** 2
- **Bathrooms:** 2

Property Features

- Security
- Gym
- Swimming Pool
- Tennis Court
- Air Conditioning
- Balcony
- Car Park
- Electricity
- Integral Kitchen
- Internet
- Alarm
- Children's Area
- Concierge
- Guardhouse
- Lift
- Equipped Kitchen
- Disabled Access

Location

