

Garden ville 5

■■■■■■■■, Thailand
Reference: 2924

฿19,700,000



3 Bedrooms

0 Bathrooms

Villa

Property Description

Pearl Property presents Garden Ville 5 – Resort-Style Detached Homes in Peaceful Huay Yai, Pattaya

Garden Ville 5 is a serene residential project offering modern, resort-style single-storey homes developed by Garden Ville Home and Property Co., Ltd. Located on Huay Yai Road Soi 12, just behind the Pattaya Floating Market, this peaceful community is ideal for those seeking nature, privacy, and a relaxed lifestyle—while still being close to the city. Construction began in 2019 and was completed in December 2021.

The project comprises 41 homes set on land plots ranging from 67 to 137 sq.wah (approx. 268–548 sqm), with usable areas between 150 and 295 sqm.

Home Types Available:

Type A: Single-storey, 3 bedrooms, 2 bathrooms, starting at 67.5 sq.wah

Type B: Single-storey, 3 bedrooms, 3 bathrooms, starting at 81 sq.wah

Facilities Include:

Communal swimming pool

Landscaped gardens and green space

Clubhouse

Indoor kids’ play area

24-hour security with CCTV

Private parking

Location Highlights:

Only 7 km from Jomtien Beach

20-minute drive to central Pattaya

Near top attractions: Pattaya Floating Market, Underwater World, Cartoon Network Waterpark, Khao Chi Chan, Nong Nooch Garden, Ramayana Waterpark, Wat Yansangwararam, and Silverlake Vineyard

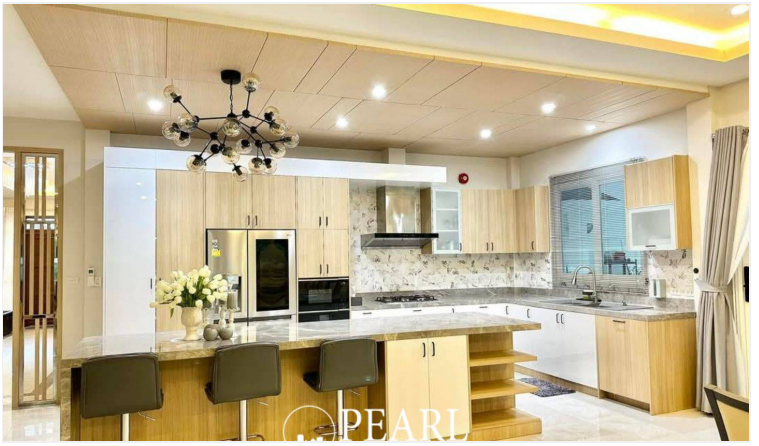
Just 2 km from the Bangkok-Chonburi motorway entrance for easy travel

Garden Ville 5 is the perfect retreat for homeowners looking for a relaxed lifestyle in a green, low-density neighborhood with modern comforts and easy access to all that Pattaya has to offer.

Contact us today to learn more or arrange a private viewing.

Photo Gallery





Property Details

- **Property Type:** Villa
- **Location:** ■■■■■■■■■■, Thailand
- **Land Area:** 22468m²
- **Price:** ฿19,700,000
- **Bedrooms:** 3
- **Bathrooms:** 0

Property Features

- Security
- Swimming Pool
- Air Conditioning
- Car Park
- Electricity
- Integral Kitchen
- Guardhouse
- Equipped Kitchen

Location

