

Eakmongkol Village Chaipruek 2

Pattaya City, Chaipruek, Thailand
Reference: 1371

฿8,900,000



3 Bedrooms



0 Bathrooms



Villa

Property Description

Eakmongkol Chaiyapruek 2 — a tranquil, low-density villa and house enclave nestled in Jomtien, Pattaya

Project Overview & Layout

- Developed by S&W Land Co., Ltd.
- Completed in December 2005
- Total of **137 units** over approx. 36 rai (\approx 57,744 sqm)
- Housing types range from **3-bedroom** up to **6-bedroom** private villas or detached homes
- Units typically offer generous floor areas (for instance, 288 sqm for 4 bed / 5 bath layouts)

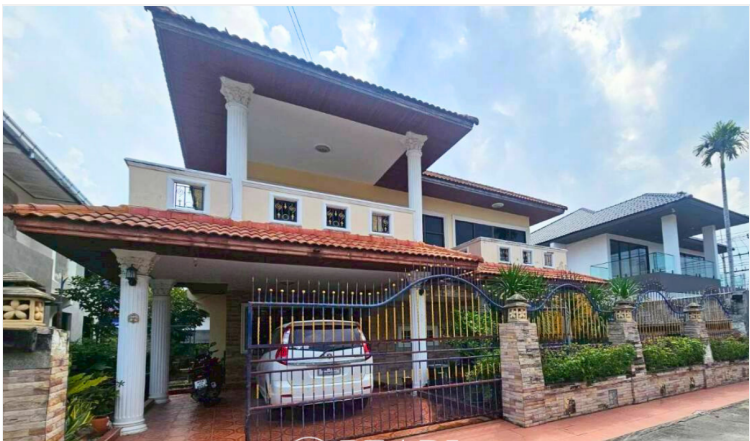
Prime Location in Jomtien / Nong Prue

Pearl Property Pattaya

Set in Soi Eakmongkol Chaipruek Village 2, off Jomtien Sai 2 Road in Nong Prue, Bang Lamung, Chon Buri Province

Just ~1.5 km from Jomtien Beach , and with direct access to the main Sukhumvit route ~1.2 km away ,residents enjoy both seaside lifestyle and city connectivity. Nearby points of interest include Pattaya Floating Market (~2.5 km) and Makro South Pattaya (~3 km)

Photo Gallery



Property Details

- **Property Type:** Villa
- **Location:** Pattaya City, Chaiyaphruek, Thailand
- **Land Area:** 57744m²
- **Price:** ฿8,900,000
- **Bedrooms:** 3
- **Bathrooms:** 0

Location

