

DSpace 3 - (Type A3) 5 Bed 8 Bath With Private Swimming Pool

Pattaya, East Pattaya, Thailand
Reference: 6274

฿49,000,000



5 Bedrooms



8 Bathrooms

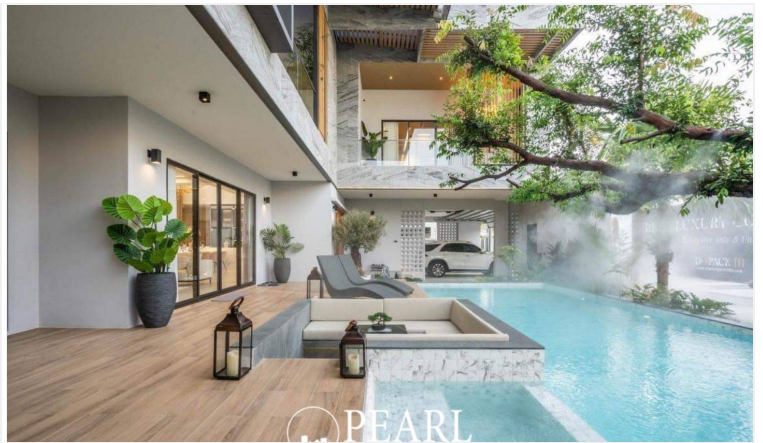
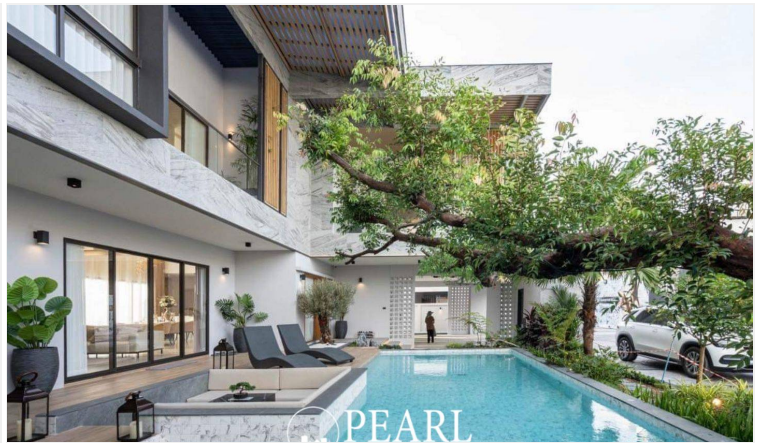
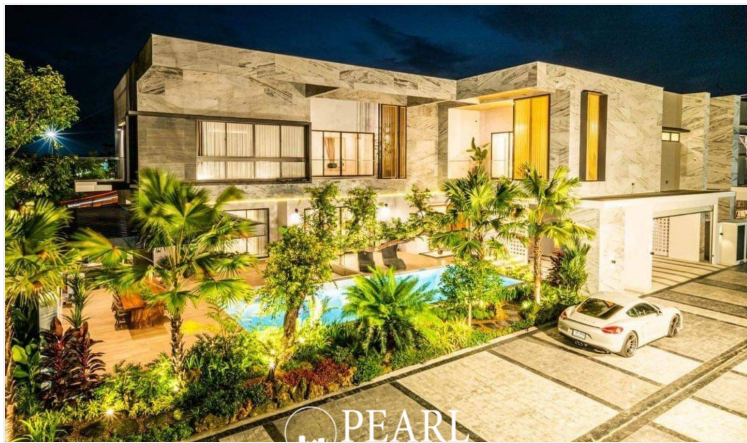


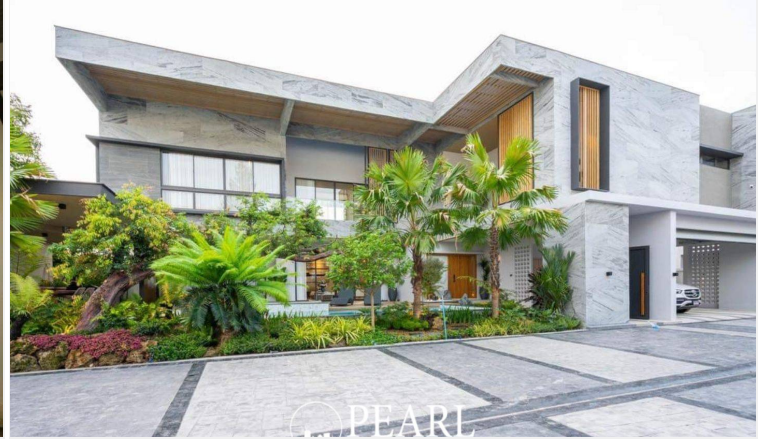
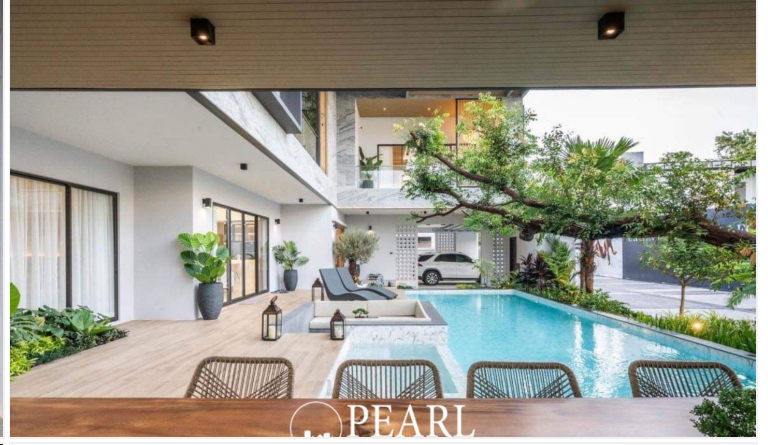
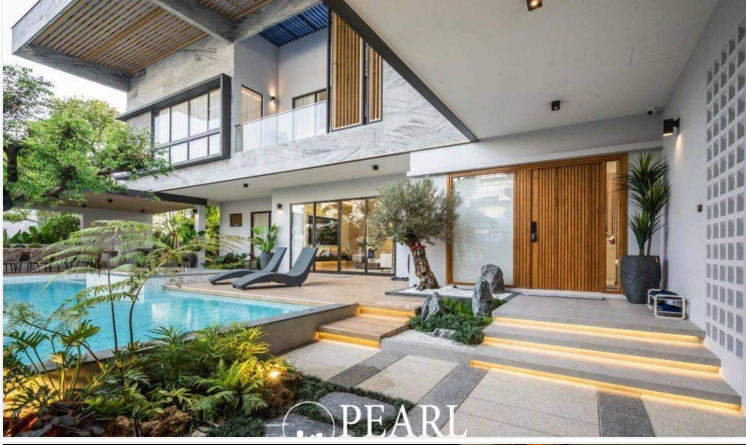
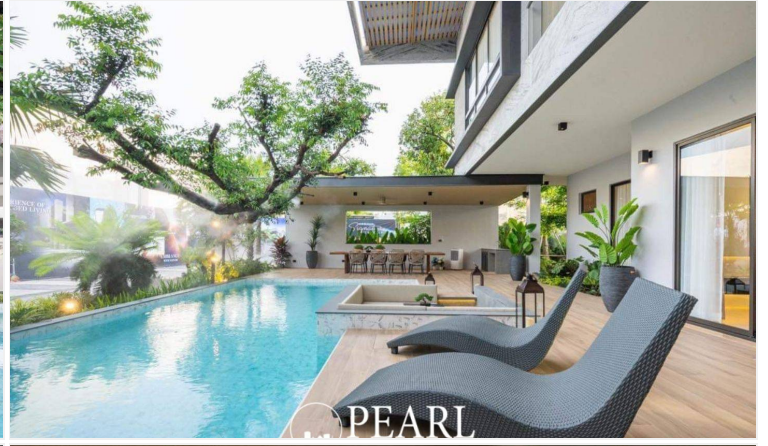
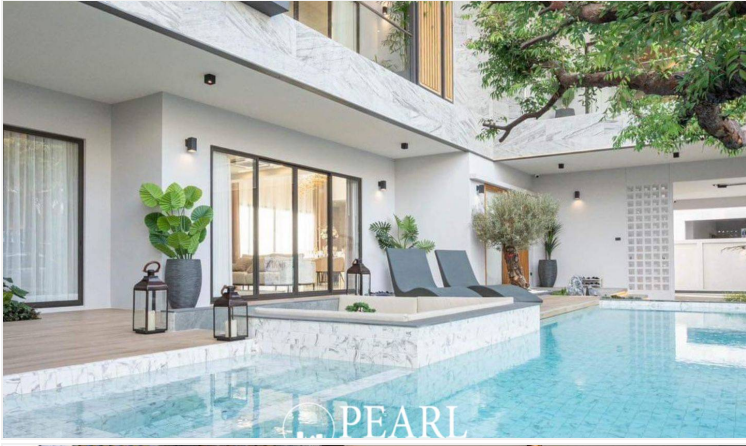
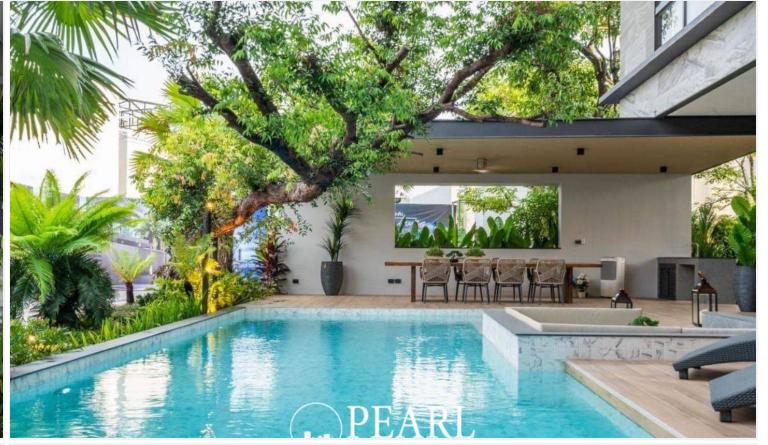
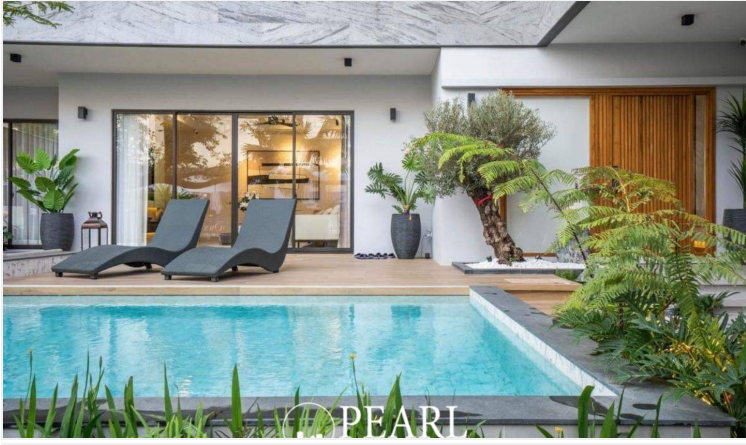
Villa

Property Description

Project information It is an incredible location for a luxury pool villa project near Mabprachan Lake in East Pattaya area, Easy access to Highway No. 36 to Rayong and Pattaya, Motorway 7 to Bangkok and Suvarnabhumi Airport, 5 minutes from Siam Country Golf, Jockey Club, the famous Regent's International School. close to many bars, restaurants and 15 minutes drive to Pattaya city. The design offers the highest quality, low maintenance and increased sustainability. Moreover, we have selected the best materials within the market to ensure these villas give their homeowners the luxury they are buying into and satisfaction of lifestyle for years to come. **Types and Details** There are two villa types available, Type A feature 5 bedrooms, 8 bathrooms Total Unit: 5 plots Plot size: starting from 176.20 - 191.80 Sq.w. Living size: 650 Sq.m.

Photo Gallery





Property Details

- **Property Type:** Villa
- **Location:** Pattaya, East Pattaya, Thailand
- **Internal Area:** 660m²
- **Land Area:** 731m²
- **Price:** ฿49,000,000
- **Bedrooms:** 5
- **Bathrooms:** 8

Location

