

# Copacabana Coral Reef Jomtien - 1 Bed 1 Bath With Private Swimming Pool (Type 19)

Pattaya, Jomtien, Thailand  
Reference: 9102

฿14,223,638



1 Bedrooms



1 Bathrooms



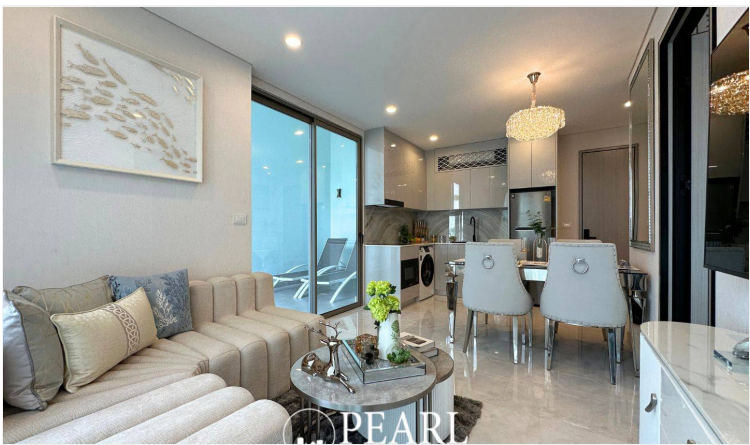
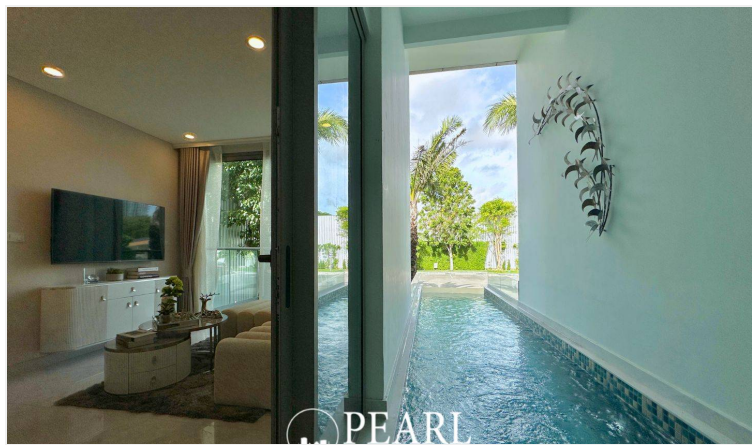
Condo



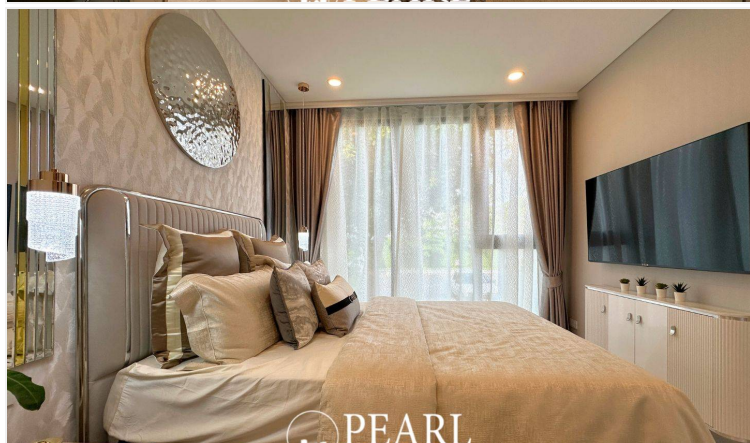
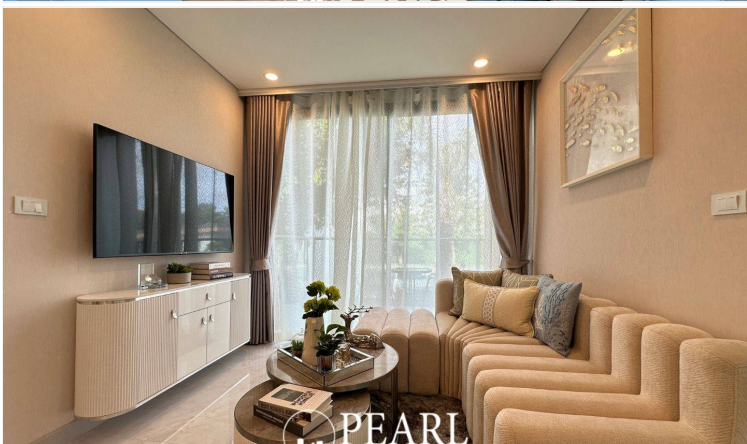
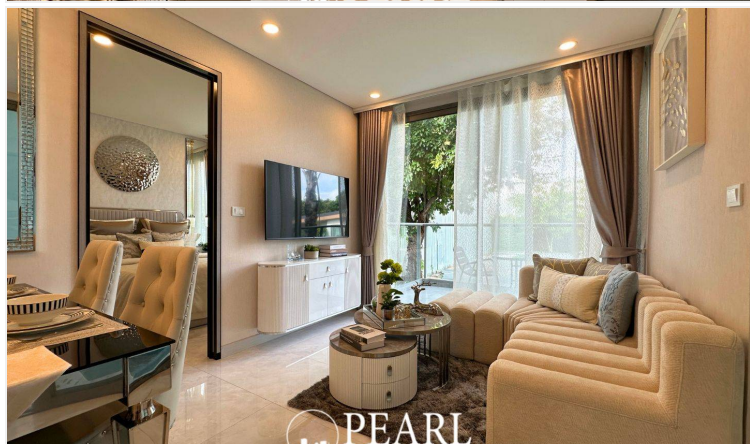
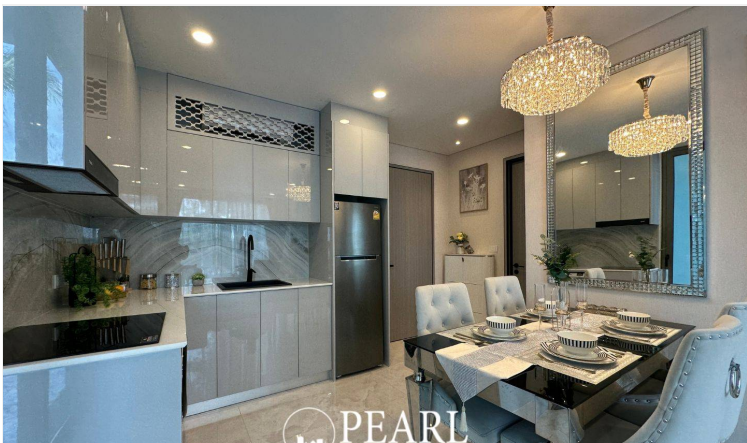
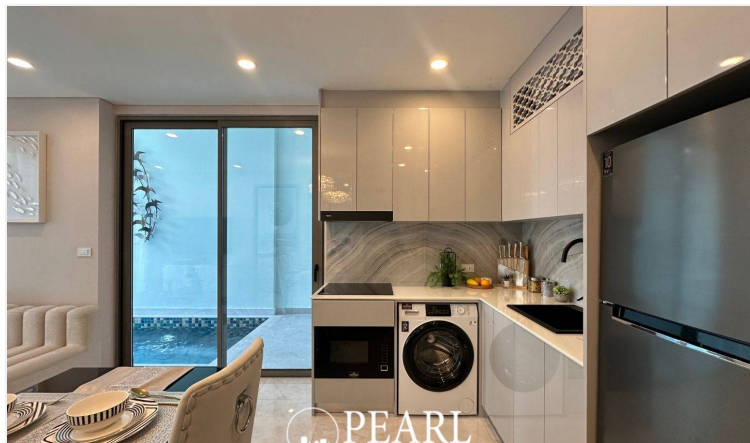
# Property Description

Copacabana Coral Reef Jomtien, a luxurious beachfront condominium offering the ultimate in modern living and serene seaside lifestyle. This stunning property boasts breathtaking ocean views, contemporary design, and an array of top-notch amenities, making it the perfect choice for those seeking a sophisticated and relaxed living environment in the heart of Jomtien. The neighborhood offers a variety of amenities including fine dining restaurants, lively bars, shopping centers, and recreational facilities. Additionally, residents can take advantage of the close proximity to Jomtien Beach, known for its golden sands and crystal-clear waters. Excellent public transportation links ensure easy access to Pattaya city center and surrounding areas. Residents of Copacabana Coral Reef can indulge in an array of world-class amenities, including: A rooftop infinity pool with sweeping ocean views Fully equipped fitness center Tranquil garden areas and walking paths Secure parking facilities 24-hour security and concierge services Exclusive access to a private beach area.

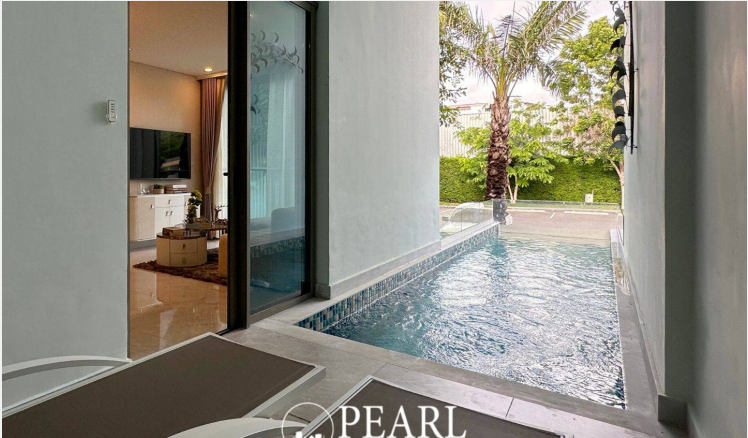
# Photo Gallery











## Property Details

---

- **Property Type:** Condo
- **Location:** Pattaya, Jomtien, Thailand
- **Internal Area:** 71.5m<sup>2</sup>
- **Land Area:** 21000m<sup>2</sup>
- **Price:** ฿14,223,638
- **Bedrooms:** 1
- **Bathrooms:** 1

## Property Features

---

- Security
- Gym
- Jacuzzi
- Sauna
- Swimming Pool
- Air Conditioning
- Balcony
- Car Park
- Electricity
- Children's Area
- Lift
- Terrace
- Library

## Location

---

