

City Garden Pattaya - 2Bed 2Bath floor 1

Muang Pattaya, Pattaya, Thailand
Reference: 4707

฿6,180,000



2 Bedrooms



2 Bathrooms



Condo

Property Description

Pearl Property presents a spacious 2-bedroom condo in City Garden Pattaya - resort-style living in the heart of the city.

Located on the **1st floor** with a serene garden view, this 78 sqm unit offers a comfortable and functional layout ideal for residential living or rental investment. The condo features **2 bedrooms and 2 bathrooms**, with modern finishes and easy access to all on-site amenities.

City Garden Pattaya is a well-established development offering privacy and convenience just minutes from Pattaya Beach, Central Festival, and Walking Street.

Property Highlights:

- 2 bedrooms, 2 bathrooms
- 78 sqm living space
-

1st floor unit with garden view

- Ideal for both residence and rental income
- Resort-style living in central Pattaya

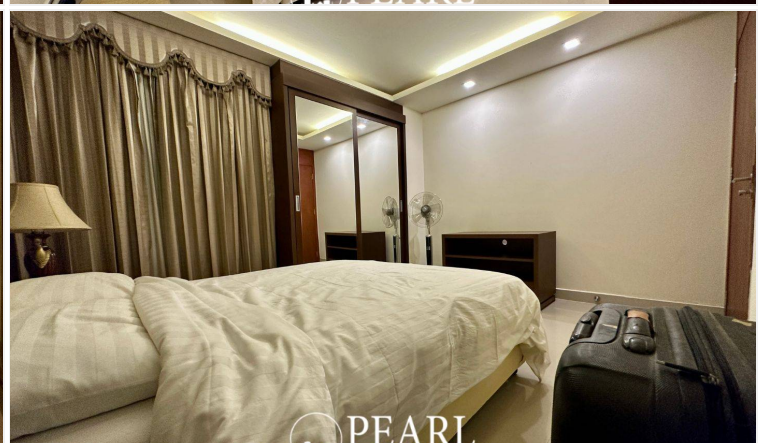
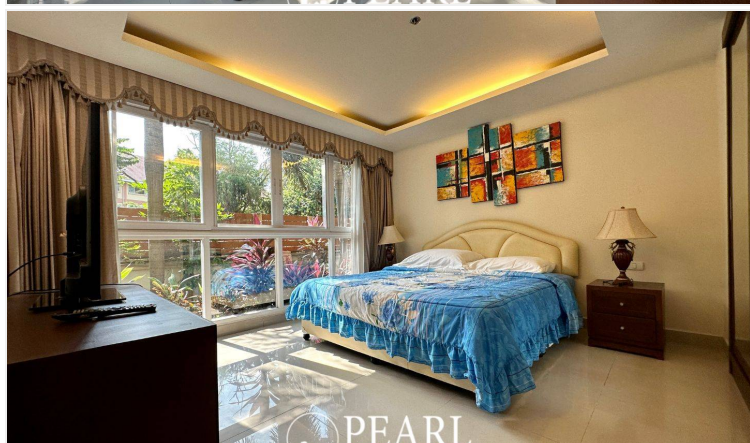
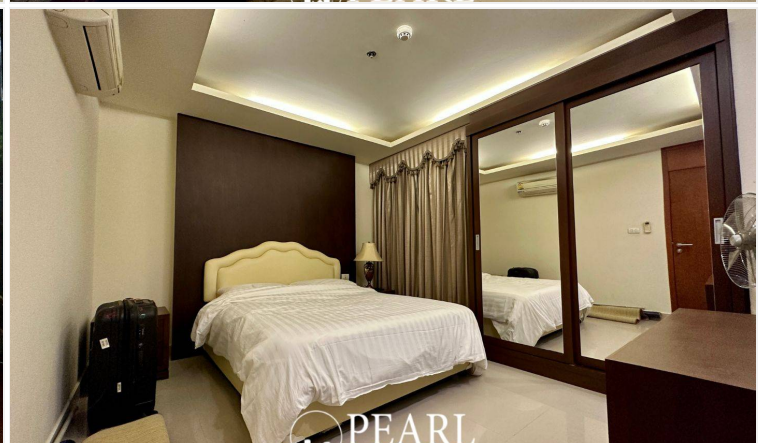
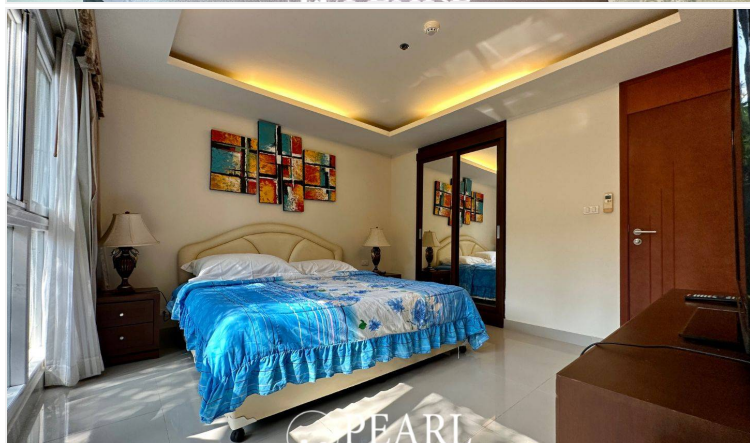
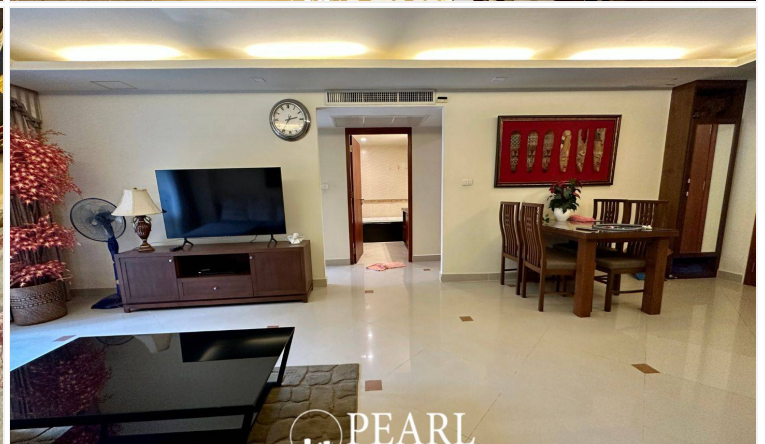
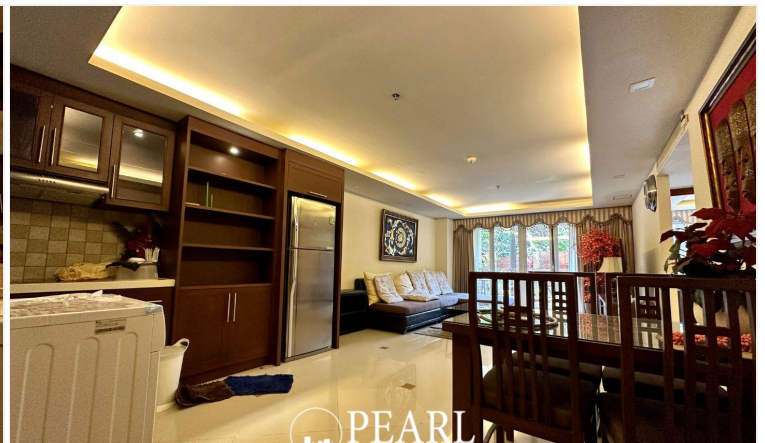
Lifestyle Benefits:

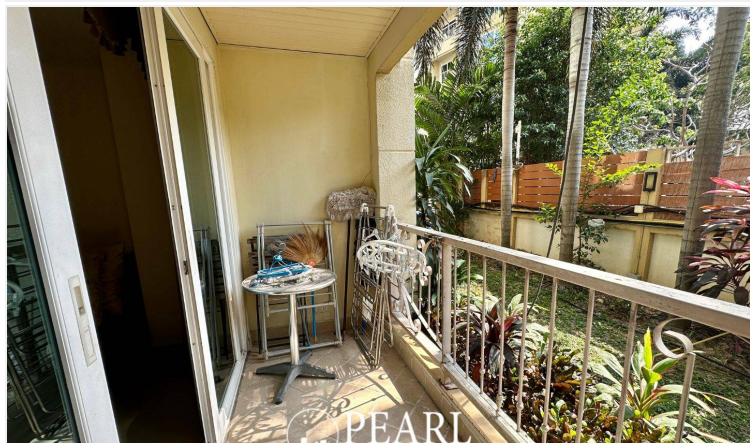
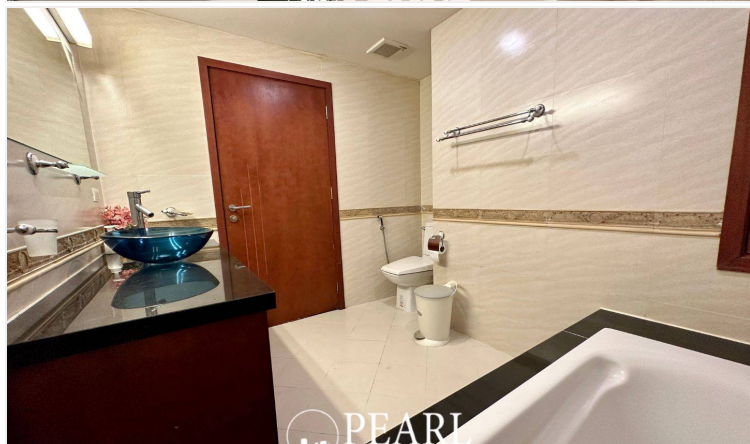
- Walking distance to beach, shopping, and nightlife
- Access to communal pool, gym, and 24-hour security
- Peaceful environment in a central location

Contact us today to schedule a viewing or request more information about this excellent property in City Garden Pattaya.

Photo Gallery







Property Details

- **Property Type:** Condo
- **Location:** Muang Pattaya, Pattaya, Thailand
- **Internal Area:** 78m²
- **Price:** ฿6,180,000
- **Bedrooms:** 2
- **Bathrooms:** 2

Location

