

Cicada townhome 4Bed - 3bath

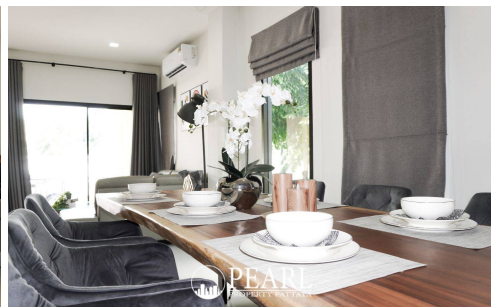
Pattaya, Thailand

Reference: 5224

฿5,400,000



4 Bedrooms



3 Bathrooms



Villa

Property Description

Pearl Property presents Cicada Boutique Townhome

Discover a modern-style townhome in a prime location near the sea at *Cicada Boutique Townhome*. This newly built project offers the perfect blend of privacy and convenience—just 15 minutes from downtown Pattaya and only 800 meters from Bang Lamung Beach.

Ideally situated in a vibrant community, the project is surrounded by local markets, schools, parks, and just a short drive from Laem Chabang Industrial Estate. It's the perfect choice for families or professionals seeking a peaceful coastal lifestyle with easy access to the city.

Property Details:

3-storey townhome on 38 sq. wah (152 sqm) land

5-meter frontage with spacious usable area

4 bedrooms, 3 bathrooms

Includes premium sanitary ware from the developer

Prime Location Highlights:

Akson Banglamung Technological College - 400 m

Rong Po Market - 600 m

Municipal Health Park - 600 m

Bang Lamung Beach - 800 m

Pa Boon Café - 5.2 km

Pattaya Sheep Farm - 6.2 km

Laem Chabang Industrial Estate - 10 km

Enjoy a tranquil atmosphere within a well-planned community, featuring wide public roads and natural surroundings—perfect for long-term living and modern family lifestyles.

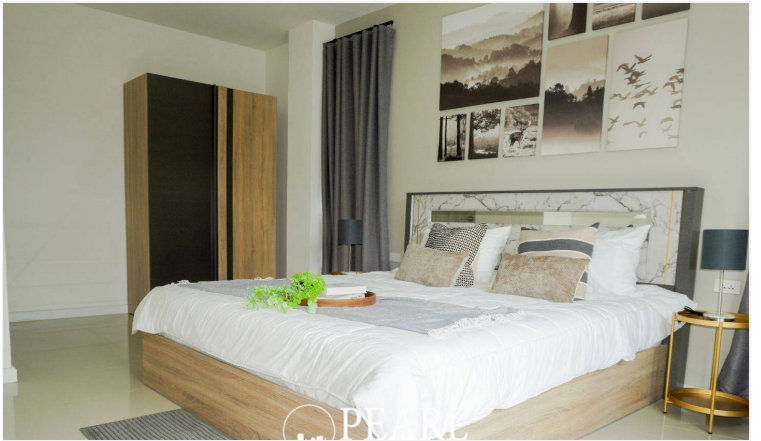
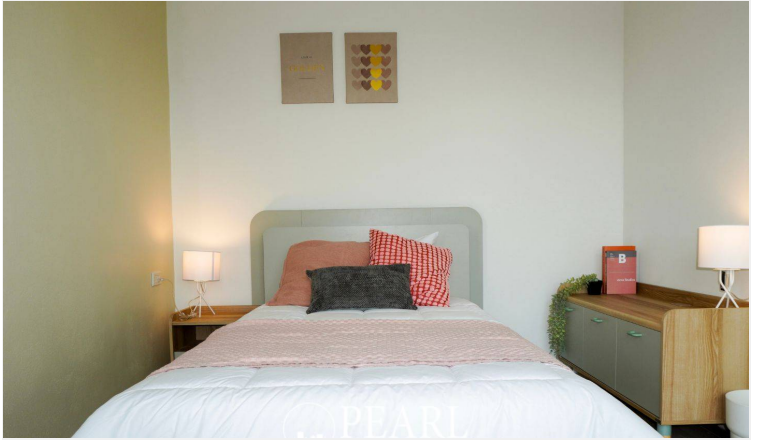
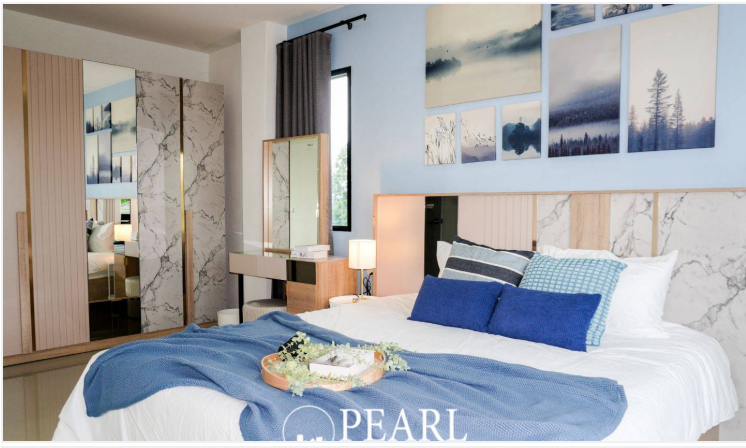
High-Quality Image Reference of Cicada Boutique Townhome

Alt text: "Modern 3-storey townhome with wide frontage near Pattaya beach"

Contact us today to reserve your unit or schedule a private viewing.

Photo Gallery





Property Details

- **Property Type:** Villa
- **Location:** Pattaya, Thailand
- **Internal Area:** 152m²
- **Land Area:** 152m²
- **Price:** ฿5,400,000
- **Bedrooms:** 4
- **Bathrooms:** 3

Location

